

Installation Instructions

Please read all instructions before installing shade.

WebbLok™ Shade System - w/ Security Box

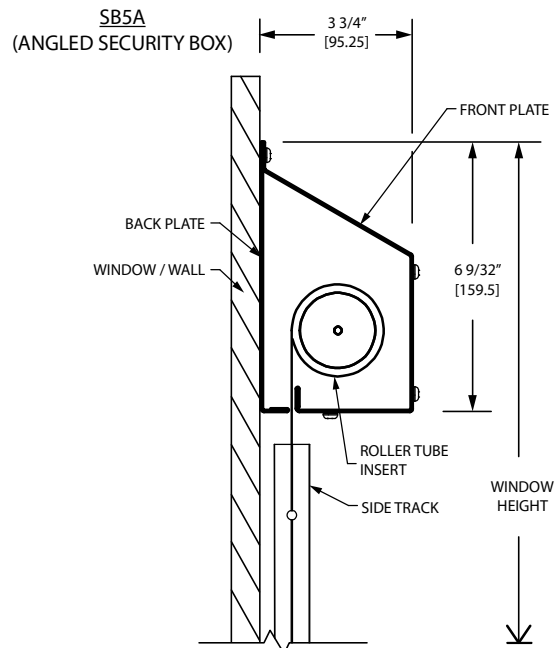
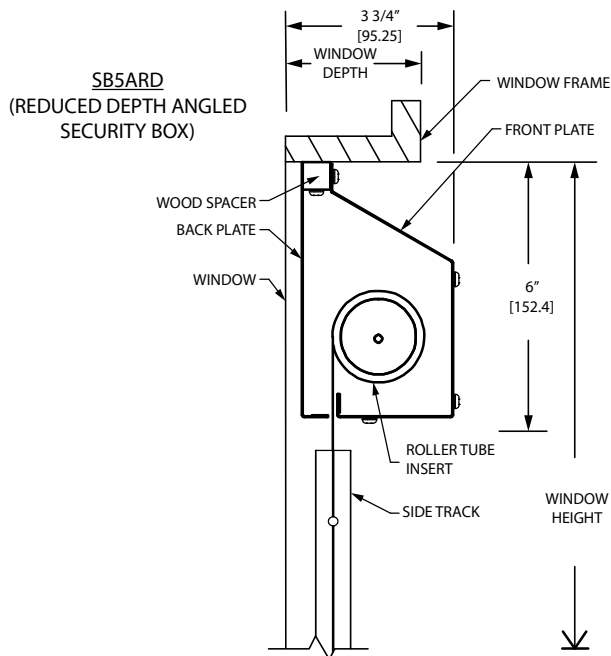
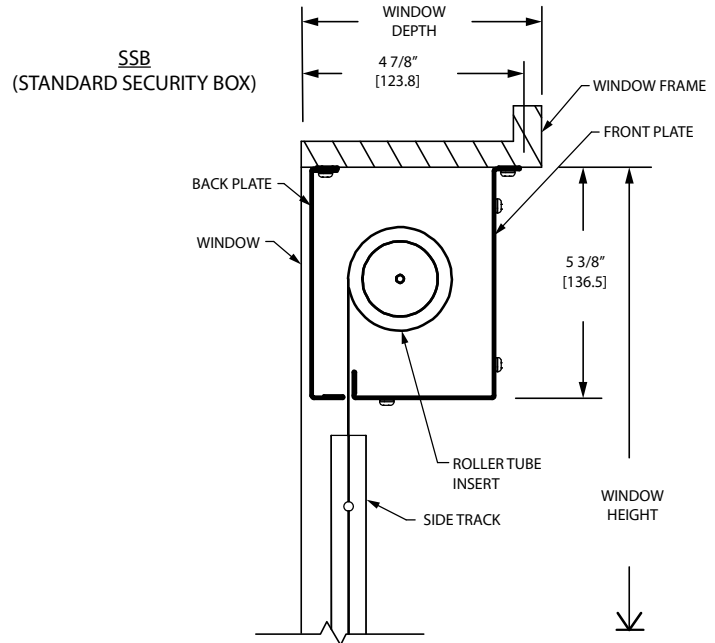
Important

1. Acclimate materials 24 hrs before installation. Maintain temperature controlled environment after installation.
2. Install in accordance with manufacturer's installation instructions. Failure to do so will void the warranty.

Installation tips

1. Ensure panels and window are clean and free from dust/dirt before installation.

SECTION VIEWS (YOU WILL RECEIVE ONE OF THESE VARIANTS)



Recommended tools

Safety Glasses, Tape Measure, Level, Standard and Security Screw Driver Bits, Power Drill and Drill Bits

IPC.2119/REV.4

JUNIPERT™ Commercial Window Treatments

inpro.com • 800.222.5556 • 262.679.9010

World Headquarters S80 W18766 Apollo Drive, Muskego, WI 53150 USA

Installation Hotline: 866.394.6776

inpro®

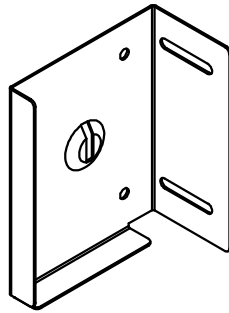
Installation Instructions

Please read all instructions before installing shade.

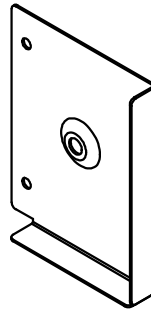
WebbLok™ Shade System - w/ Security Box

COMPONENTS

SSB
(STANDARD SECURITY BOX)



CWB-0013
SLOTTED DRIVE
BRACKET



CWB-0012
HOLED IDLER
BRACKET

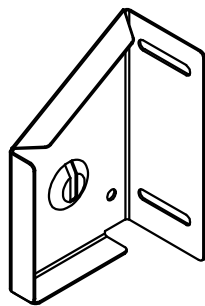


CWSB-0008
SECURITY BACK
PLATE

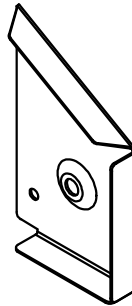


CWSB-0002
SECURITY BOX COVER

SB5A
(ANGLED SECURITY BOX)



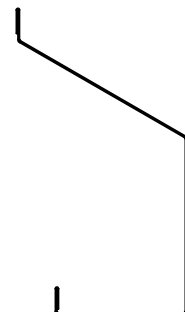
CWB-0019
SLOTTED DRIVE
BRACKET



CWB-0022
HOLED IDLER
BRACKET

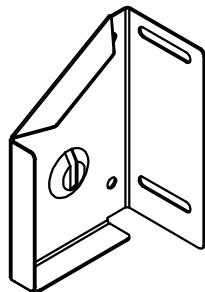


CWSB-0009
SECURITY BACK
PLATE



CWSB-0003
SECURITY BOX COVER

SB5ARD
(REDUCED DEPTH
ANGLED SECURITY BOX)



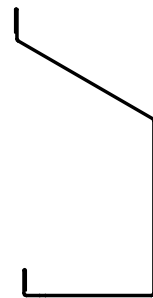
CWB-0017
SLOTTED DRIVE
BRACKET



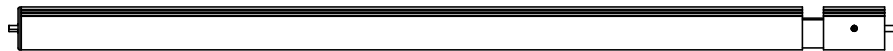
CWB-0016
HOLED IDLER
BRACKET



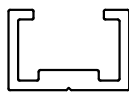
CWSB-0010
SECURITY BACK
PLATE



CWSB-0004
SECURITY BOX COVER



ROLLERTUBE



CWT-0001
ALUM. EXTRUDED
TRACK



CWB-0006
WOOD SPACER
(SB5ARD ONLY)

JUNIPERTM Commercial Window Treatments

inpro.com • 800.222.5556 • 262.679.9010

World Headquarters S80 W18766 Apollo Drive, Muskego, WI 53150 USA

Installation Hotline: 866.394.6776

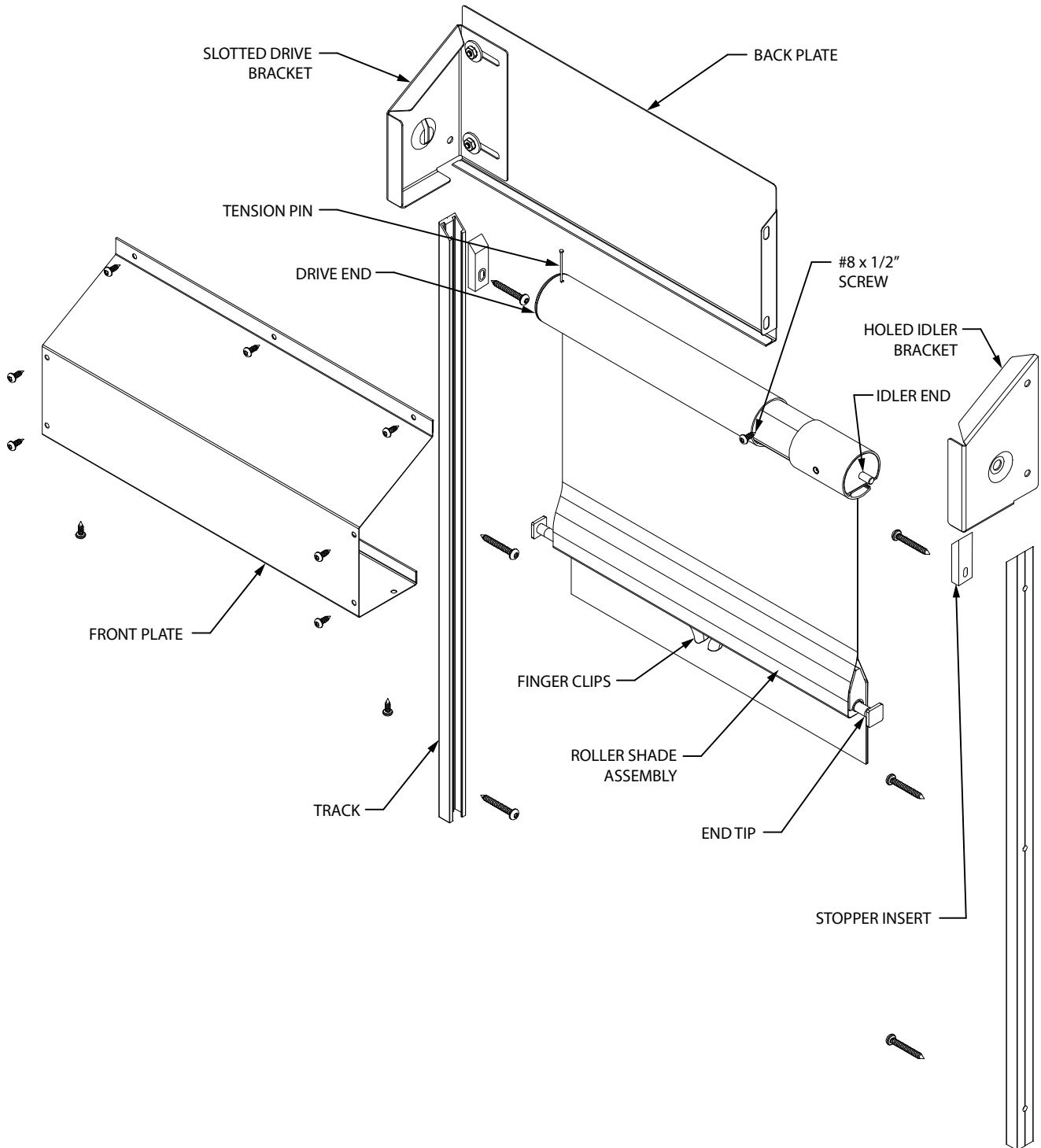
inpro®

Installation Instructions

Please read all instructions before installing shade.

WebbLok™ Shade System - w/ Security Box

EXPLODED VIEW (SB5A SHOWN)



JUNIPER™ Commercial Window Treatments

inpro.com • 800.222.5556 • 262.679.9010

World Headquarters S80 W18766 Apollo Drive, Muskego, WI 53150 USA

Installation Hotline: 866.394.6776

inpro®

Installation Instructions

Please read all instructions before installing shade.

WebbLok™ Shade System - w/ Security Box

1. BACK PLATE AND BRACKETS - INSIDE MOUNT

Note: When installing an outside mount shade unit, reference the outside mount/mullion installation packet.

Hardware Description:

- Slotted Drive Bracket – 2 1/4" [57] tab with two slots on back of bracket with Back Plate attached.
- Holed Idler Bracket – No slider tab
- Back Plate – Powder coated steel with 5/8" folded bottom lip and 5/8" side lip with pre-drilled mounting holes that align with the mounting holes in the Holed Idler Bracket.
- Top Lip Support – 5/8" x 5/8" wood support for Reduced Depth Angled Security Boxes only.

Note: The back plate for Square Security Boxes will have a top lip with mounting holes and the back plate for Angled Boxes will not.

A. Mount Slotted Drive Bracket, with back plate attached, using the mounting holes in the bracket plate. The back plate will come pre-attached to the Slotted Drive Bracket with a bolt, nylon washer and locking nut.

Note: Occasionally, but rarely, the bolt and nut will vibrate loose during shipping. If this occurs, reattach the back plate to the slotted drive bracket. Insert the bolt from the window side of the back plate, through both back plate and the back tab of slotted drive bracket, then through the nylon washer. Secure using the locking nut. The bolt head should be on the window side of the back plate with the nut on the inside of the security box unit, securing the slotted drive end bracket.

B. (Fig. 1) With back plate attached, place left slotted drive bracket against the top of the window sill and as far back toward the glass as possible. Keep the bracket in front of any handles or moldings. Fasten the slotted drive bracket on the left side of the window and the holed idler bracket on the right side.

Note: Clear depth: Total depth minus all obstacles, such as handles. THIS DEPTH MUST BE NO LESS THAN 1 1/2" [38].

C. (Fig. 2) Place the Holed Idler Bracket against mounting surface. Slide the 5/8" side lip of the back plate over against the Holed Idler Bracket. Place screws through the lip on the back plate, through the mounting holes on the Holed Idler Bracket. The bracket will be between the mounting surface and the lip on the back plate.

Fig. 1
(SB5ARD Shown)

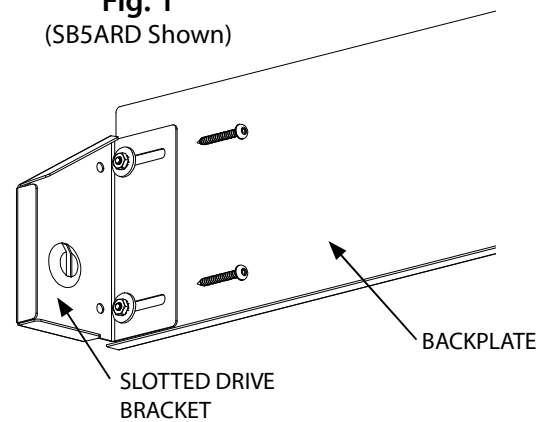


Fig. 2

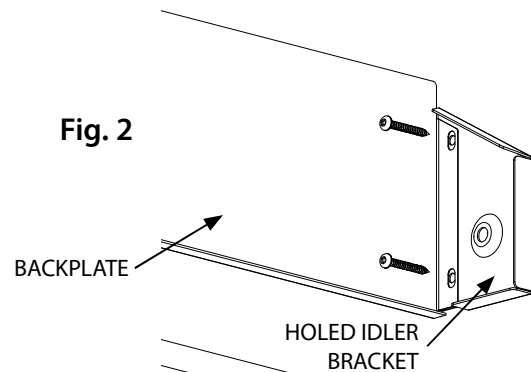
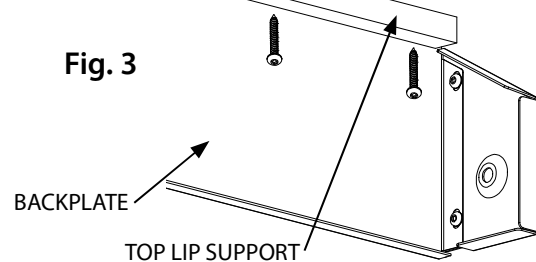


Fig. 3



- C.** - For Square Boxes, attach top lip of back plate to top sill/ceiling through the mounting holes.
- For Reduced Depth Angled Boxes, install the Top Lip Support to top sill/ceiling. (Fig 3)
- For Standard Angled Boxes, the Back Plate will be secured into the mounting surface behind the shade unit later in the installation process (step 6).

Installation Instructions

Please read all instructions before installing shade.

WebbLok™ Shade System - w/ Security Box

2. TRACK

(Fig. 4) The track is to be placed so the center of the track is centered under the opening of the security box. This placement will allow the fabric to be centered in the track once the roller tube and bottom rail are installed.

(Fig. 5) Make sure tracks are pressing firmly against the sill and fasten the tracks using #10 pan head screws at the bottom and middle mounting holes. Do not install the top screw yet, that will be installed later in step 7.

Note: (Fig. 6) Make sure track is installed with notched ramps facing down.

Note: In most cases, for outside mount, the track will be pre-attached to the mullions.

Fig. 5
(SB5A SHOWN)

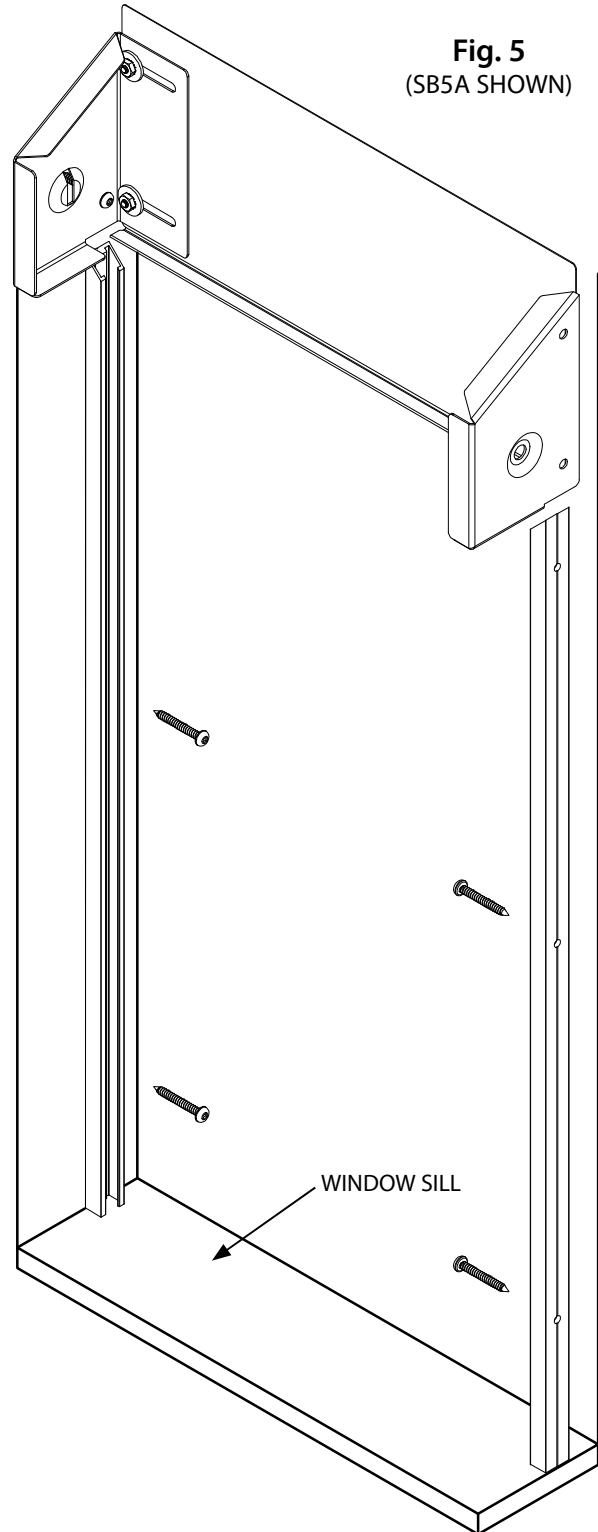


Fig. 4
(SIDE VIEW,
SB5A SHOWN)

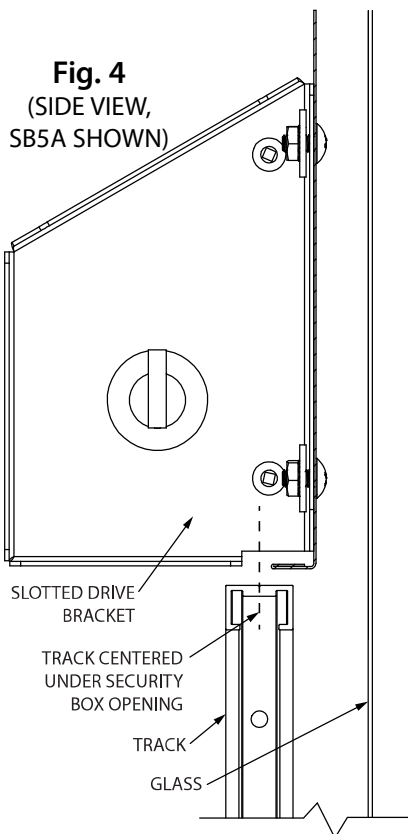
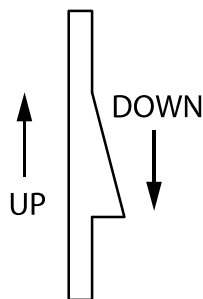


Fig. 6



Installation Instructions

Please read all instructions before installing shade.

WebbLok™ Shade System - w/ Security Box

3. SPRING ROLLER TUBE AND SHADE

Unroll the shade completely. On the left side you will see a square drive pin on the end and tension pin through the barrel. On the right is a sliding extender with a circular idler rod on the end.

Note: Be sure the tension pin is up while installing the roller tube, to keep it from falling out.

A. First slide the square drive pin into the left Slotted Drive Bracket (Fig. 7), then slide the circular idler rod on the sliding extender into the right Holed Idler Bracket (Fig. 8). When the roller tube is fully extended, make sure the ends of square drive pin and circular idler rod do not protrude beyond the edges of the brackets they are installed into.

B. (Fig. 8) Important: Drive a #8 x 1/2" pan head screw into the flat portion of wood, tight against the roller barrel. This secures the roller tube between the brackets.

C. After roller tube is secured into the brackets, check to make sure the shade fabric and bottom rail are centered in the window. You can adjust this by sliding the fabric in either direction where it connects to the roller tube.

Fig. 7
(SB5A SHOWN)

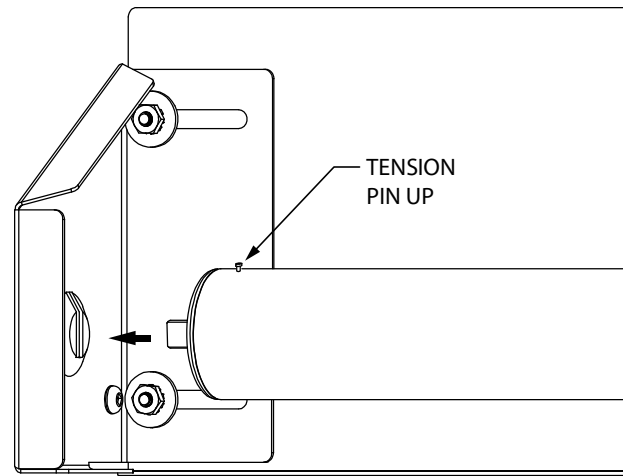
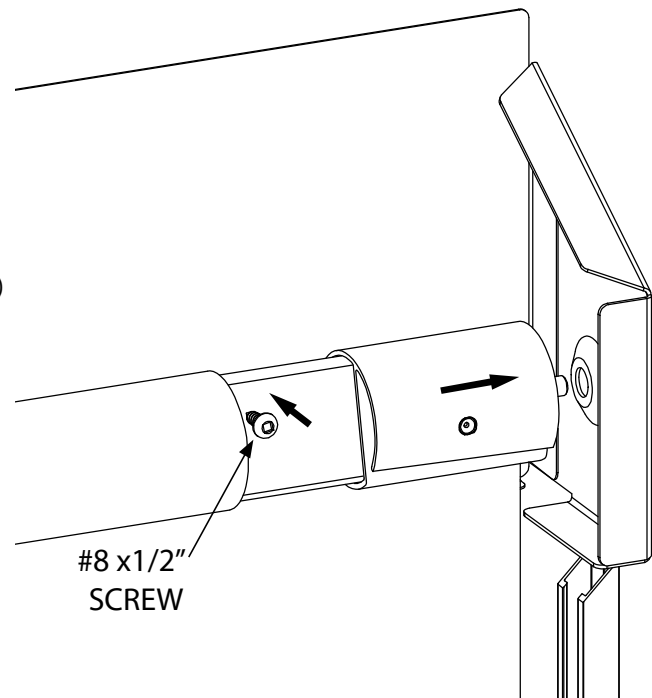


Fig. 8
(SB5A SHOWN)



Installation Instructions

Please read all instructions before installing shade.

WebbLok™ Shade System - w/ Security Box

4. END TIPS

A. (Fig. 9) Squeeze both finger clips so they meet at the centerline of the shade and hold in this position throughout the remaining steps.

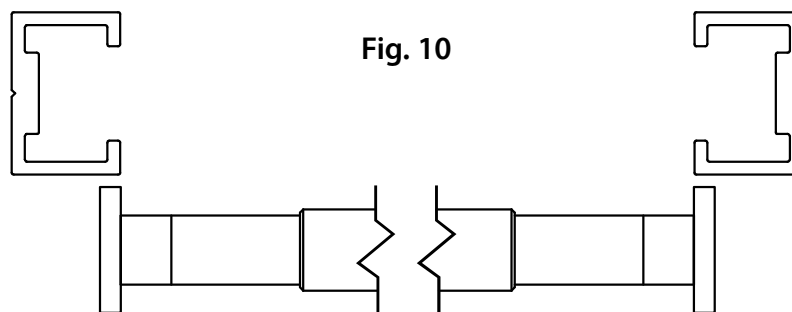
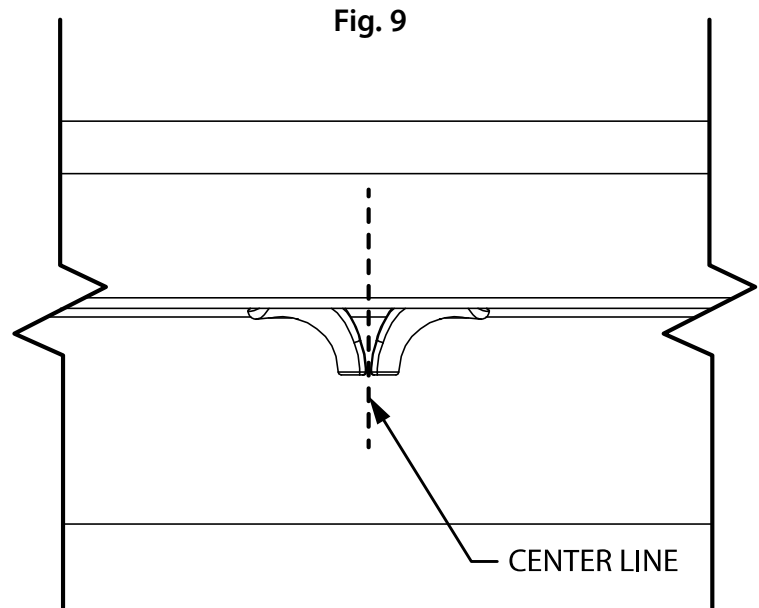
B. (Fig. 10) The end tips are screwed into the bottom rail for easy adjustment. Screw the right end tip in or out so the tip extends just past the edge of the aluminum track. You can check this by keeping the bottom rail centered, and setting the end tip on the face of the track.

C. (Fig. 10) Adjust the left end tip in the same manner. Place both end tips on the face of the tracks and confirm both are still in the correct position.

D. Double check to make sure there is even space on both sides between the material and the end tips before installing the end tips into the track.

E. Lift bottom rail and insert the end tips into the top of the tracks. Let the shade drop to full length.

F. Further adjustment of end tips may be needed in the next steps of the installation process.



Installation Instructions

Please read all instructions before installing shade.

WebbLok™ Shade System - w/ Security Box

5. ROLLER TENSION

A. (Fig. 12) Remove tape over tension pin in the roller. Grab the roller with one hand, turn roller away from you while pulling tension pin out with your other hand.

TIP: Tape tension pin into top corner of the bracket in case future tension adjustments are needed.

B. After the pin has been removed, let the shade roll up while making sure it stays centered in the window.

C. Test operation of shade to see if the end tips need to be adjusted any further. **ALWAYS** adjust equally on both sides. Secondly, if the end tips make any abnormal noise during normal operation, spray WD40, dry dry silicone spray or similar onto a paper towel or rag and lightly apply a small amount to just the tip. If noise persists, use the same rag and apply a small amount to the inside of track. **DO NOT OVER APPLY, TOO MUCH CAN MAKE THE SHADE NOT PERFORM AS INTENDED.**

The factory adds tension when inspecting the shades, however, job site conditions are impossible to duplicate. Each shade must be tested in the window for proper tension. **This is the most critical and important adjustment of the WebbLok system.** The roller should slowly raise the shade to each track stop, smoothly and easily. If the roller tube does not raise the shade to each track stop, there is not enough tension and turns must be added to the roller.

If the shade slams into the stops, or the end tips skip past a track stop, there is too much tension and turns must be taken off. Remember too little is better than too much. Too much tension causes premature end tip wear and may void the warranty.

Adding Tension: (Fig. 13)

Unroll the shade completely and replace the tension pin into the roller tube. Remove the #8 x 1/2" screw installed in step 3 and carefully remove the roller tube assembly from the window while keeping the bottom rail in place. Clamp a vice grip or drill chuck to the square drive end. Holding the vice grip, remove the tension pin and slowly add 1-2 turns of tension (clockwise) to start. Reinsert the tension pin before removing the vice grip. Reinstall the roller tube following previous instructions and test the new tension. Repeat steps to add tension as needed.

Fig. 12

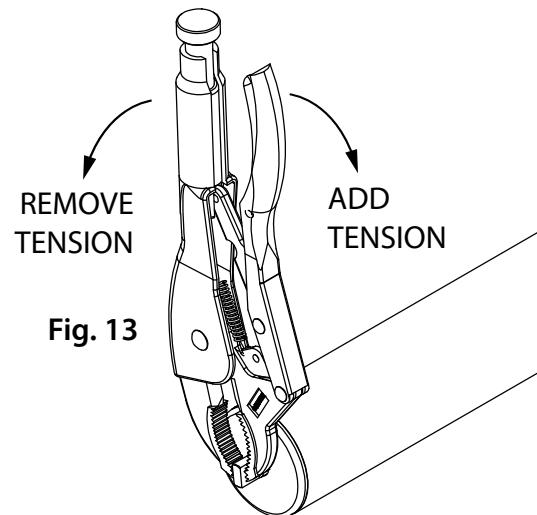
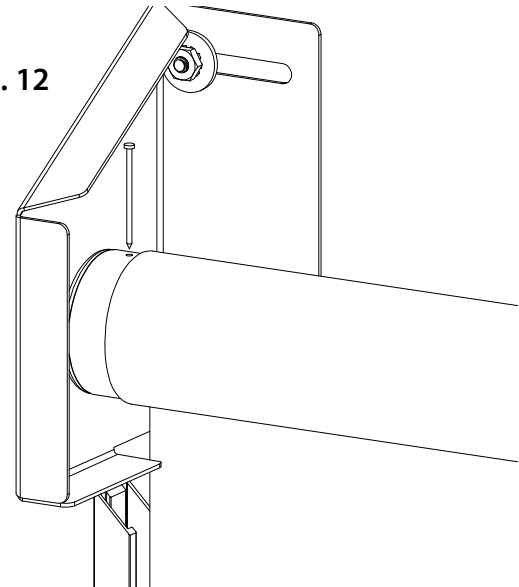


Fig. 13

Removing Tension: (Fig. 13)

Carefully remove the roller tube following instructions above. With vice grip or drill chuck clamped onto square drive end, allow 1-2 turns of tension to release (counter-clockwise) to start. Reinstall the roller tube following previous instructions and test the new tension. Repeat steps to remove tension as needed.

Note: If all tension is accidentally lost, add 30 turns of tension as a start. Add or remove tension until the desired tension is set.

Installation Instructions

Please read all instructions before installing shade.

WebbLok™ Shade System - w/ Security Box

6. TOP SCREW AND STOPPER INSERT (FIG. 14)

Before installing the security box cover, install the track stopper inserts and #10 pan head top screws. This will prevent the shade from exiting the top of the track.

If the stopper inserts do not slide into the tracks, remove the track center screws and pivot the tracks out from the window, while keeping the end tips at the lowest stops.

Secure the track stopper inserts with the #10 pan head screws through the mounting hole. Ensure the top of the insert is flush with the top of the track angle when secured.

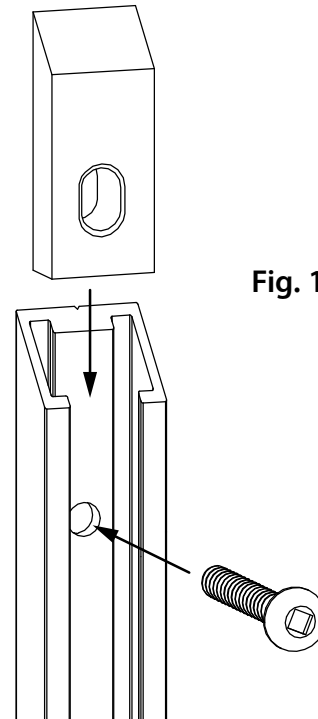


Fig. 14

7. SECURITY BOX COVER (FIG. 15)

Take the security box cover and hook the bottom vertical lip on the bottom of the cover behind the back of the brackets. Push up until the box snaps in place.

Center the security box cover and check to make sure there is no more than 1/4" gap on either side. Fasten the cover to the brackets, through the pre-punched holes on the cover face and underside, using the supplied #8 x 1/2" self drilling screws. (6 screws total)

Note: If the security box cover is too wide to fit in the window, or the gap on either side of the cover is more than 1/4", the cover is not to be installed and should be replaced.

Lastly, secure the top lip of the security box cover.

- For Square Boxes, attach top lip of cover to top sill or ceiling through the mounting holes.
- For Reduced Depth Angled Boxes, attach top lip of cover to the previously installed wood top lip support.
- For Standard Angled Boxes, drill through holes on the top lip, through the back plate, into the mounting surface behind the shade unit.

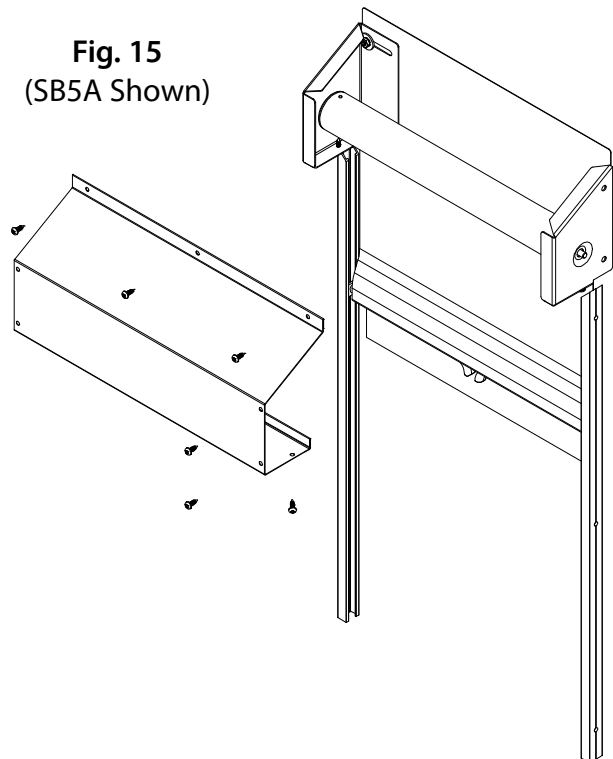


Fig. 15
(SB5A Shown)

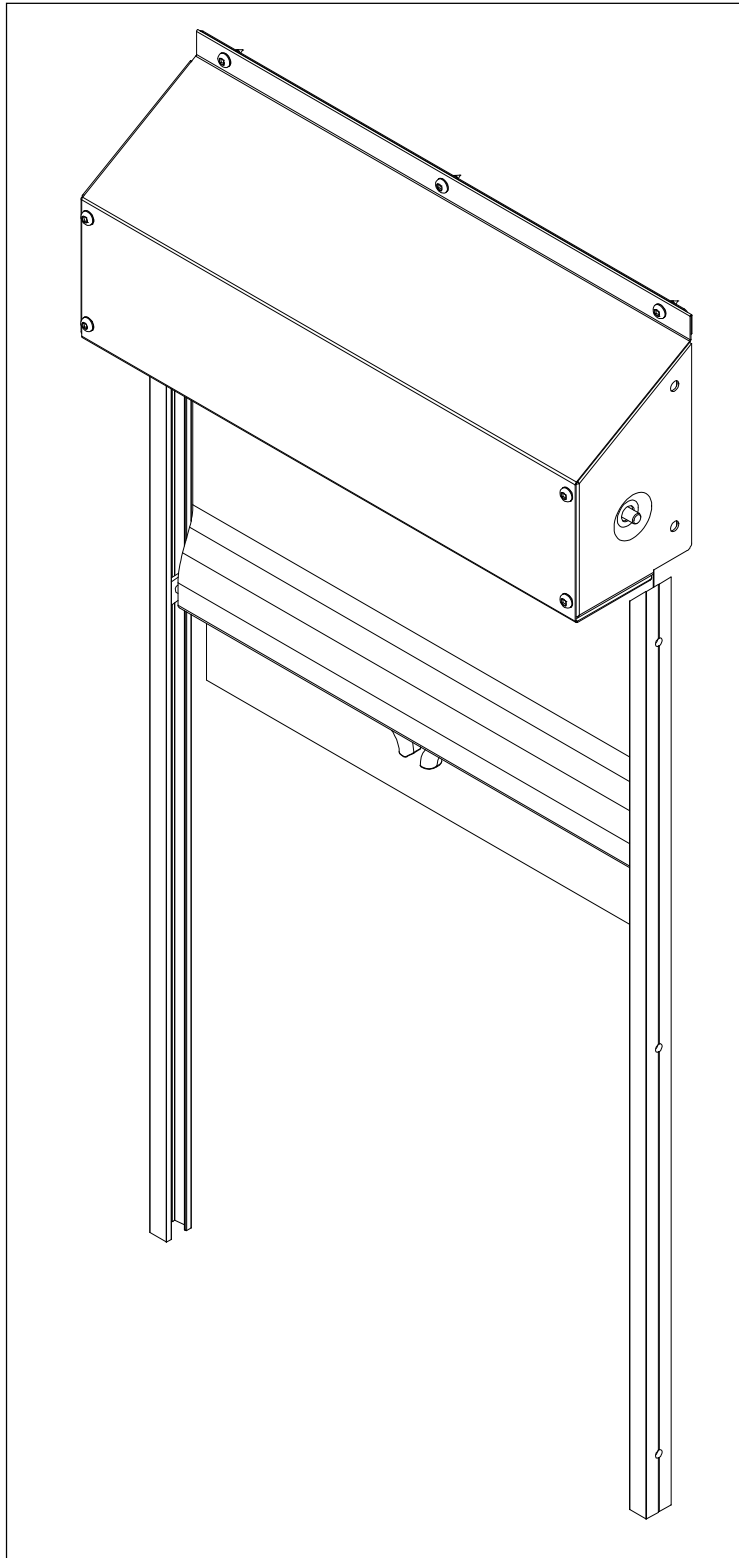
Installation Instructions

Please read all instructions before installing shade.

WebbLok™ Shade System - w/ Security Box

FINAL ASSEMBLY

(SB5A Shown)



JUNIPER™ Commercial Window Treatments

inpro.com • 800.222.5556 • 262.679.9010

World Headquarters S80 W18766 Apollo Drive, Muskego, WI 53150 USA

Installation Hotline: 866.394.6776

inpro®