

# Installation Instructions

## Stainless Steel Wall Panels and Trim

Please read all instructions before installing handrail.

### Important:

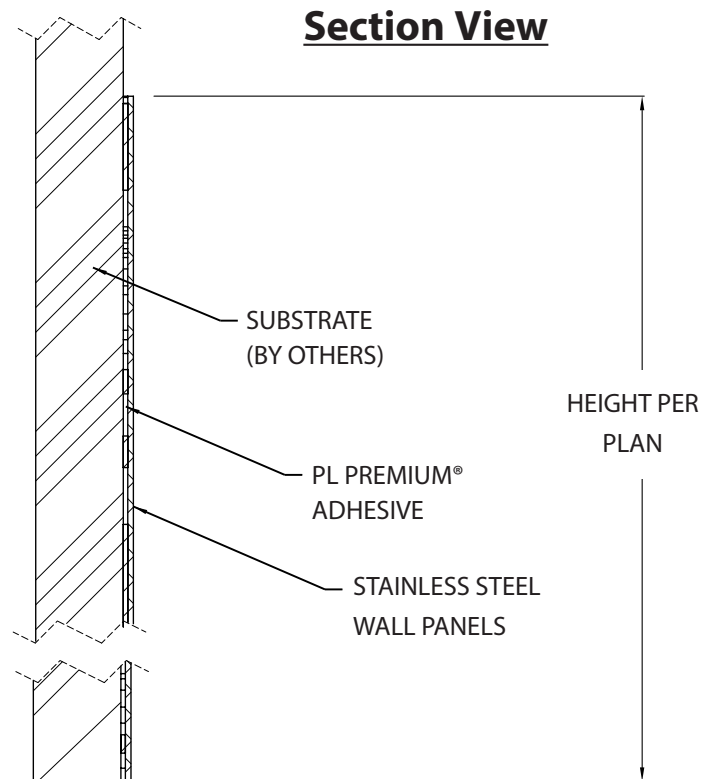
1. Acclimate Stain Steel Panels, Trim, adhesives and wall substrates to room temperature 24 hours before installation. Ensure panels and trim are on a level surface while acclimating.
2. 24 hours before, during and 48 hours after installation, maintain a building temperature between 70°-80° F (21°- 26° C) and keep humidity below 80%.
3. Substrate must be dry, well sealed and free of dirt, loose paint, wax and grease. Glossy surfaces may require sanding or priming to help promote adhesion.
4. Remove any coatings designed to improve clean- up as these coatings may affect adhesion.
5. If available review related project drawings for the install
6. Stainless steel panels are positioned 1/2" [13mm] away from corner conditions to account for screw mounting and deviations from true 90° angles.
7. Trims to be used with smooth sheet only. Stainless steel trim does not fit stainless steel diamond plate panels.

### Field Cutting Tips:

1. Make sure the cutting blade for your tool is suggested for use on stainless steel to prevent damage or injury. Before cutting, ensure material is safely secured in order to avoid movement or vibration during cutting.
2. Angle Grinder w/ Stainless Steel Cut Off Wheel
  - Only experienced users should handle such equipment.
  - Only mount the cutting wheel on a machine designed for the operation.
  - Do not use force. Do not give the wheel side to side pressure, it may damage the cutting wheel.
  - Cut in a straight line, ninety degrees to the work piece.
3. Plasma Cutter
  - Only experienced users should handle such equipment.
  - Select the appropriate cutter for the thickness and ensure a clean air supply, correct air pressure and electrode are in place.
  - Start with maximum current and adjust as needed.
  - Approach the metal at an angle, 60° from horizontal, 30° from vertical and then rotate the torch to the vertical position.
  - Apply appropriate speed according to thickness.

### Recommended Tools & Materials:

•Air plasma cutting system or angle grinder with stainless steel cut off wheels •Noga DB1000 sheet metal deburring tool •Trowel 3/16 x 1/4 x 5/16" •Laminate roller •File •Standard stainless steel sheets •Trim piece package •Clear 100% silicone (or silver) •Gloves •Mineral spirits (solvent-based adhesive) •Adhesive appropriate for substrate •Saw horses •Rags •Tape measure •Utility Knife •Safety glasses or face shield •Suitable work table sized to sheets



### Pre-Installation Planning

- Pre-fit scribe each panel before fastening and/or adhering in place.
- Before beginning installation remove any wall covering which may affect panel adhesion.
- All cutting and drilling should be done prior to application of adhesive.
- Preplan for surface applied cove and base molding and trim. Sheets should be installed so that the base molding will not restrict normal panel movement during expansion and contraction. Cut panels a minimum of 1/4" [6.4mm] above floor where the applied base molding will attach. Poured acrylic floor with build-in base cove should be in place before installation.

IPC® Door + Wall Protection

inpro.com • 800.222.5556 • 262.679.9010

World Headquarters S80 W18766 Apollo Drive, Muskego, WI 53150 USA

Installation Hotline: 866.394.6776

**inpro**®

IPC.3263/REV.2

# Installation Instructions

## Stainless Steel Wall Panels and Trim

Please read all instructions  
before installing handrail.

### Component Overview

SAS-SS-4408  
(SMOOTH - 4'x8' - 18GA)

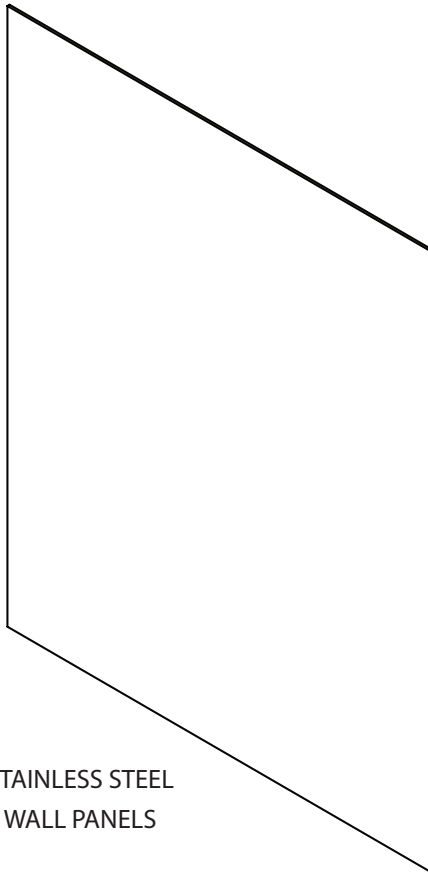
SAS-SSDP-4408  
(DIAMOND PLATE - 4'x8' - 18GA)

SAS-SS-4410  
(SMOOTH - 4'x10' - 18GA)

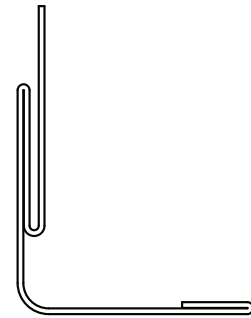
SAS-SSDP-4410  
(DIAMOND PLATE 4'x10' - 18GA)

SAS-SS-3308  
(SMOOTH - 4'x8' - 20GA)

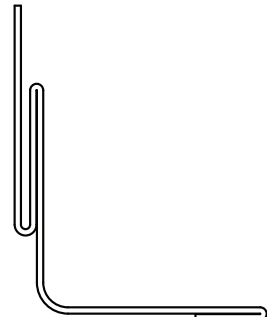
SAS-SS-3310  
(SMOOTH - 4'x10' - 20GA)



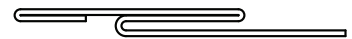
STAINLESS STEEL  
WALL PANELS



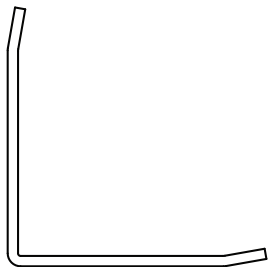
SAS-SSOCT-120  
STAINLESS STEEL  
OUTSIDE CORNER TRIM



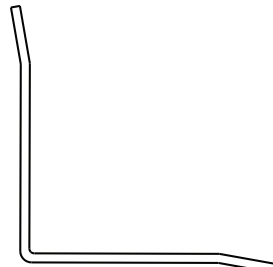
SAS-SSICT-120  
STAINLESS STEEL  
INSIDE CORNER TRIM



SAS-SSDT-120  
STAINLESS STEEL  
DIVIDER TRIM



SAS-SSDP-IC (DIAMOND)  
STAINLESS STEEL  
OUTSIDE CORNER



SAS-SSDP-OC (DIAMOND)  
STAINLESS STEEL  
INSIDE CORNER



SAS-SSCT-120  
STAINLESS STEEL  
TOP CAP TRIM

IPC® Door + Wall Protection

[inpro.com](http://inpro.com) • 800.222.5556 • 262.679.9010

World Headquarters S80 W18766 Apollo Drive, Muskego, WI 53150 USA

Installation Hotline: 866.394.6776

**inpro**®

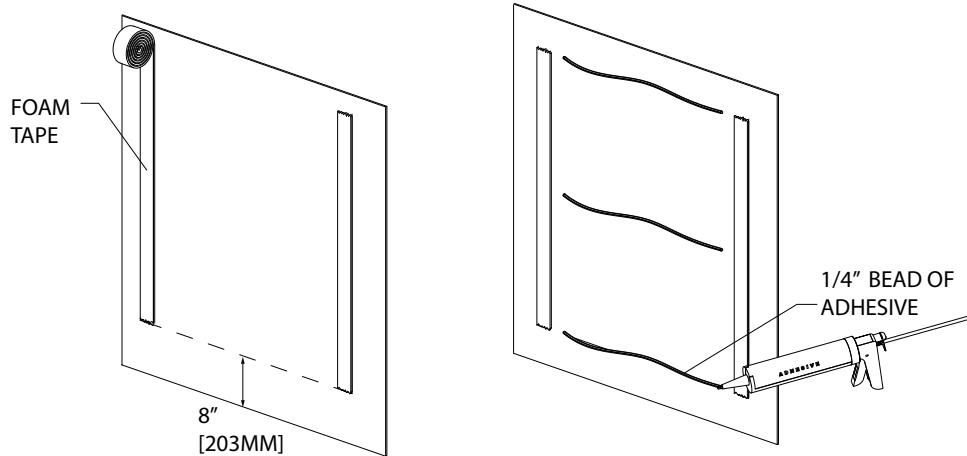
# Installation Instructions

## Stainless Steel Wall Panels and Trim

Please read all instructions before installing handrail.

### Installation

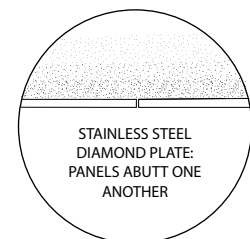
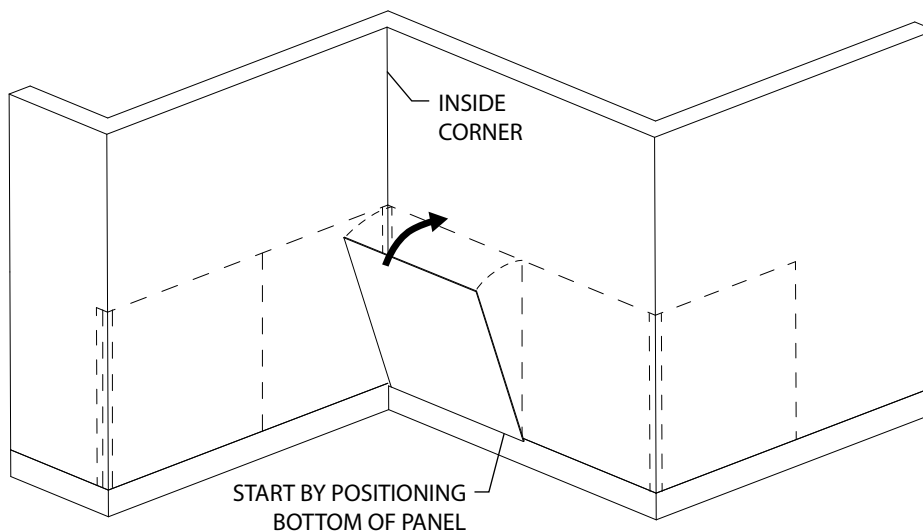
1. Trim all panels to fit and cut any fixture openings. Oversize pilot holes if drop-in ceiling wall angle is attached to and through the panel (please allow for proper expansion and contraction).
2. Apply two (2) strips of double sided foam tape, vertically 2"-3" [50-76mm] from each edge and 8" [203mm] from the bottom edge.
3. Apply 1/4" [6mm] bead of PL-Premium® horizontally between the strips of foam tape, evenly space the beads of adhesive down the height of the panel.



4. If conditions permit, begin installations at inside corner conditions. When installing panels, use the suction cup grabbers and position the bottom edge of the panel first.
5. Slowly tilt panel into position ensuring the panel aligns with the adjacent corner or adjoining panels. Firmly press panel into position once tape has made contact with the wall. **IMPORTANT:** Once tape contacts the wall it cannot be cleanly repositioned, and should be considered permanent.

NOTE: If using stainless steel sheet trim, see the Trim Installation Section of the Installs.

6. Repeat steps 2-5 to continue installation along entire length of the layout/wall, making sure to attach the needed trim pieces where applicable. Ensure the top edge of each panel is flush and continuous with the panel next to it.



IPC® Door + Wall Protection

inpro.com • 800.222.5556 • 262.679.9010

World Headquarters S80 W18766 Apollo Drive, Muskego, WI 53150 USA

Installation Hotline: 866.394.6776

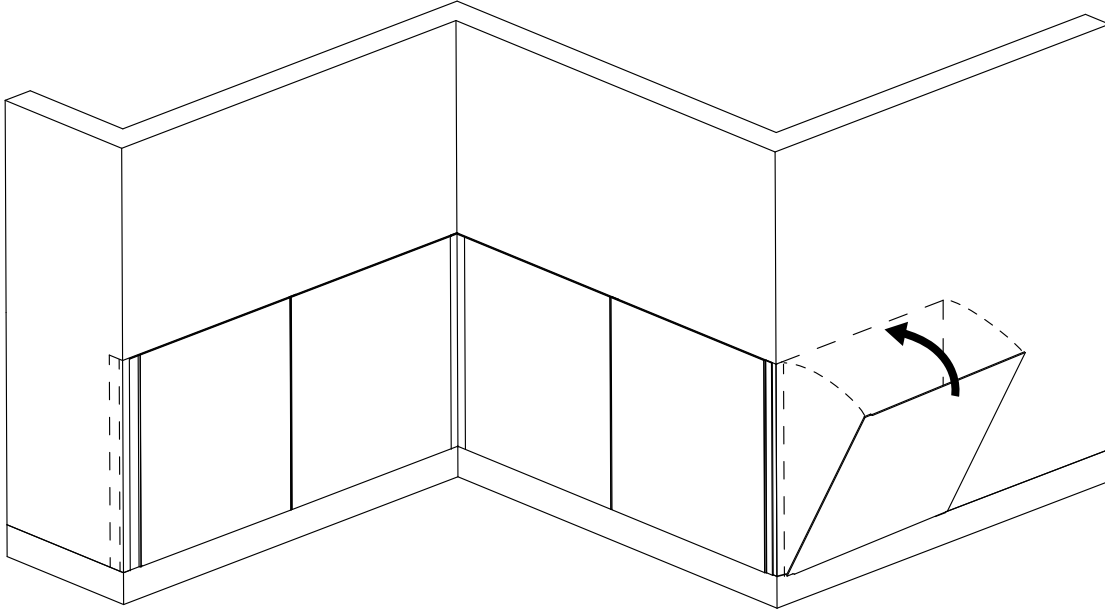
**inpro**®

# Installation Instructions

Please read all instructions before installing handrail.

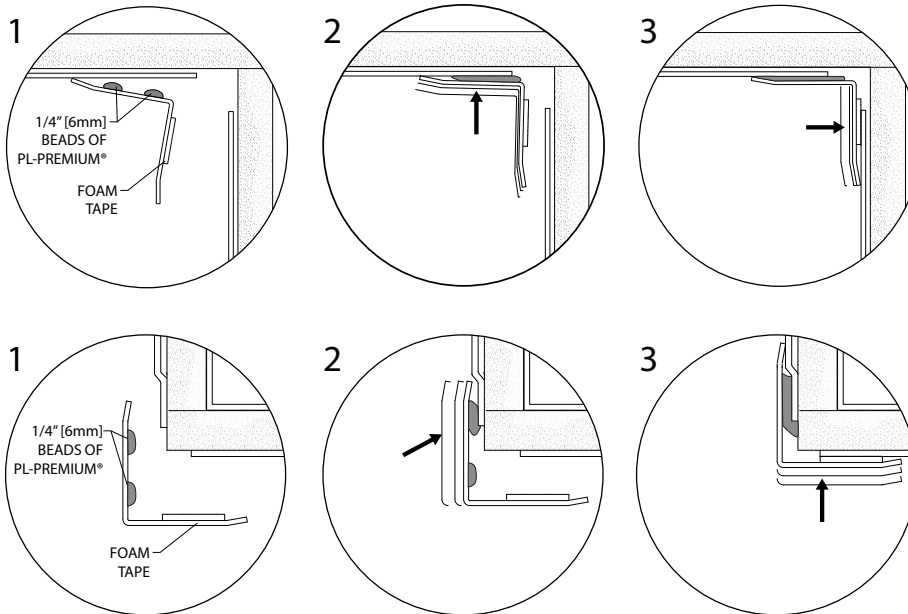
## Stainless Steel Wall Panels and Trim

6. After installing a complete run of panels, continue installation along any adjoining wall or layout sections, co all corner trim pieces until the entire installation is complete.



7. For corner trims, apply a single strip of foam tape to one of the backsides of the corner trim wings, then apply two (2) 1/4" [6mm] beads of PL-Premium® on back of the opposing wing. Position trim piece close to the corner, adhere the wing with the PL-Premium® to the panel first, then slide the trim piece into the corner so the wing with foam tape sets squarely into the corner; press the trim piece into the corner so the tape firmly against the panel to ensure adhesion.

8. Immediately clean up an PL-Premium® that may have squeezed out from underneath the wing.



IPC® Door + Wall Protection

inpro.com • 800.222.5556 • 262.679.9010

World Headquarters S80 W18766 Apollo Drive, Muskego, WI 53150 USA

Installation Hotline: 866.394.6776

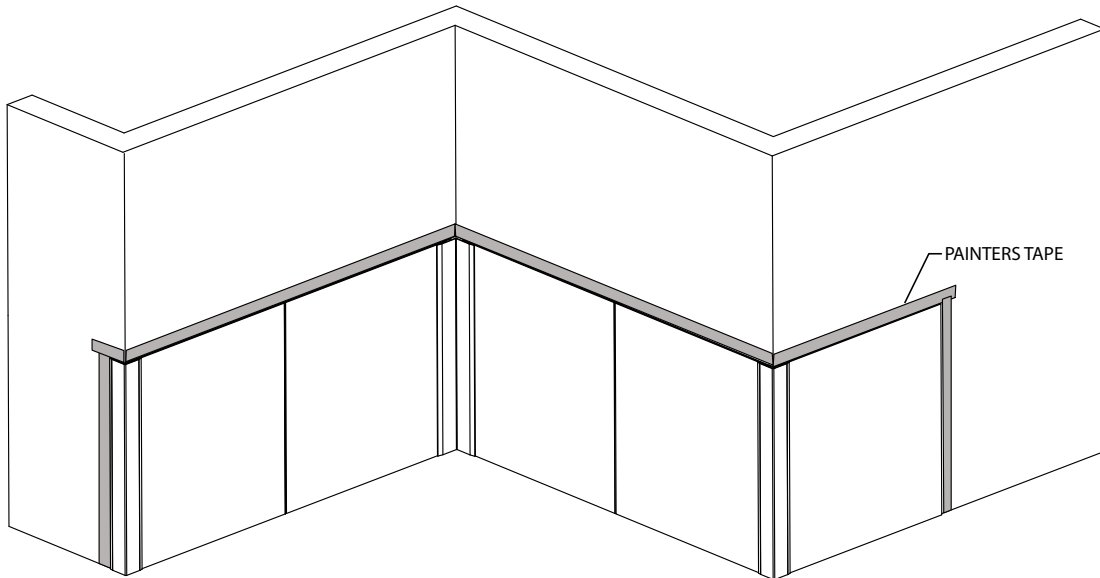
**inpro**®

# Installation Instructions

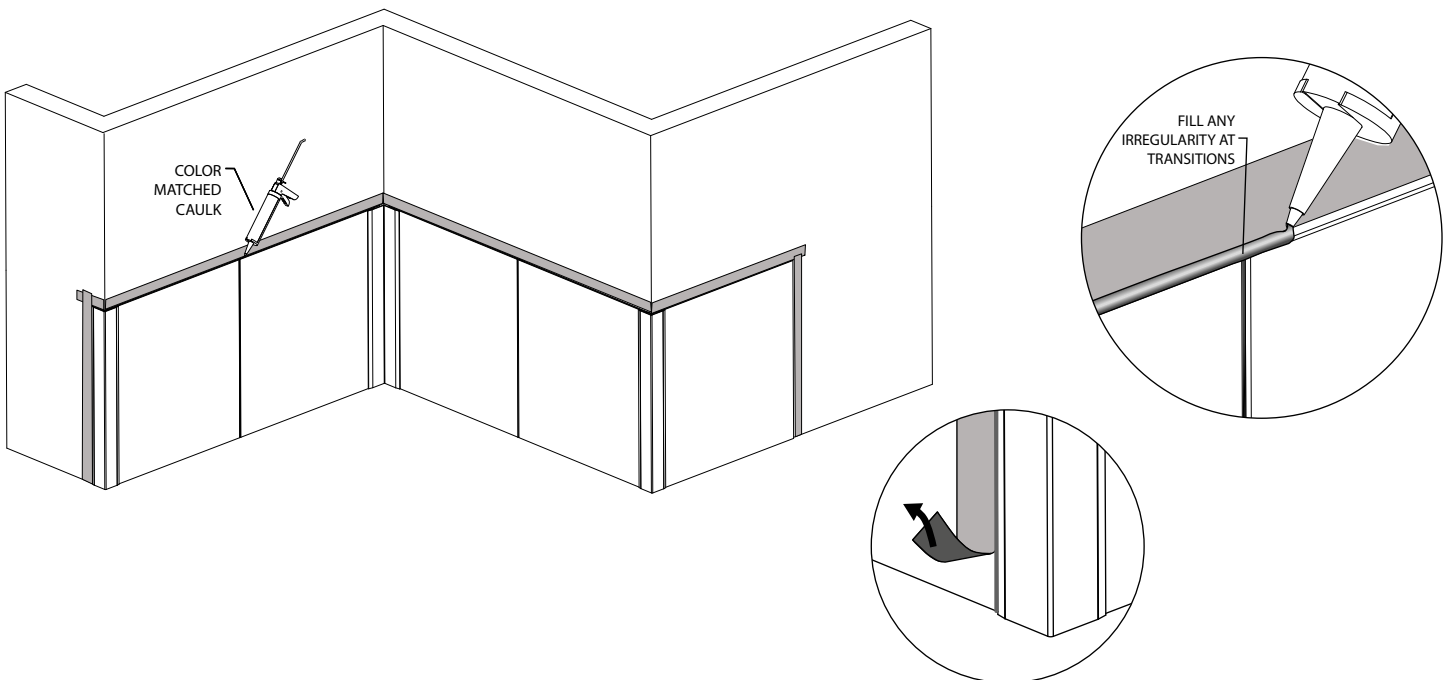
## Stainless Steel Wall Panels and Trim

Please read all instructions before installing handrail.

9. After installation is complete, line all outside edges using blue painters tape, make sure the tape is straight, and the bottom edge of the tape sits slightly above (1/32-1/16" [1-1.5mm]) the top edge of the panel in front of it.



10. Apply a bead of color matched caulk to any exposed edge on the installation. Ensure the caulk penetrates into the gap between the panel and wall. After an edge has been sealed, use a plastic putty knife to scrape any excess sealant off of the panel face, then carefully remove the blue painters tape from the entire edge, by pulling back and away. Repeat for all exposed edges.
11. Remove painters tape after completing bead of sealant, and clean work area.



IPC® Door + Wall Protection

[inpro.com](http://inpro.com) • 800.222.5556 • 262.679.9010

World Headquarters S80 W18766 Apollo Drive, Muskego, WI 53150 USA

Installation Hotline: 866.394.6776

**inpro**®

# Installation Instructions

## Stainless Steel Wall Panels and Trim

---

Please read all instructions  
before installing handrail.

### Trim Installation

1. If using trim pieces with the stainless steel installation, install the first sheet on the wall. Cut the trim pieces with the appropriate tool if needed.
2. Slide vertical divider trims (#2) or inside corner trims (#1) on the next sheet to be installed. Overlap the edge of the sheet on the wall with the divider trim (#2) or inside corner trim (#1). These will be locked in place by the adjoining panel, but a small bead of the supplied PL-Premium may be applied to a non visible face to ensure no movement after installation.
3. Slide the outside corner trim (#4) on the last panel to meet at the outside corner. Apply a small bead of the supplied PL-Premium to the non visible face opposite the one connecting to the stainless steel panel. Press the trim down firmly to ensure no movement after installation.
4. Install the top caps (#3) by sliding it on the top edge of the sheet after the sheet is in place. The back leg of the top cap should make contact with the upper most horizontal bead of PL-Premium on the back of the stainless steel panel.
5. Immediately clean up any PL-Premium that may have squeezed out from underneath any of the trim pieces.