

Prism™ Solid Surface Wall Panels Over Tile or CMU Supplement

Please read all instructions before installing products.

These instructions are intended as a supplement to InPro's Wall Cladding and Shower Wall installation instructions, please see those instructions for all installation steps.

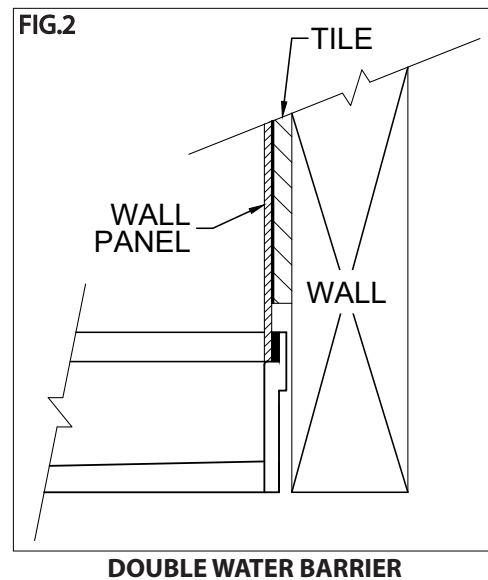
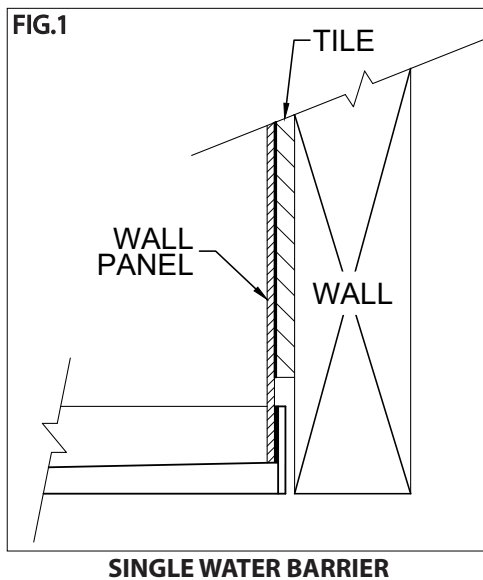
Note:

- When installing directly onto CMU, ensure that the CMU is cleaned and sealed prior to installation.
 - See installation instructions for material recommendations.
1. Treat any mold/mildew with 3 parts water to 1 part household bleach mixture. Leave it on for 20 minutes and add more as it dries; wear eye and skin protection; rinse thoroughly.
 2. Remove all dirt by scrubbing with detergent and warm water, rinse thoroughly, and then allow to dry.
 3. Scrape out and widen any cracks; brush out all the dust. Seal the cracks with matching 100% acrylic or siliconized acrylic caulk, and smooth it flush while still wet. Make second application in several hours if needed. Check grouting and repair or re-grout as needed
 4. **Tile Only** - To prepare a Tile wall for InPro® Boss 385 100% silicone, use a belt sander with 24 or 36 grit sandpaper and "burnish" a 2" x 2" area on the tile, approximately every 8"-10" square over the entire surface of the wall until you remove the glazed surface, or until a coarse texture exists.
 5. Place quarter-coin sized drops of Boss 385 100% silicone every 8"-10" on the wall (the burnished areas for tile) and install the panels. See the Wall Cladding or Shower Wall installation instructions for more details.

Installing Wall Panels Over Tile along with a Prism Shower Receptor

When installing wall panels over tile along with a shower receptor, you have two options to ensure proper wall cladding alignment:

Option 1: Chip out the lower portion of tile to form a void at the bottom of the wall. The water barrier/flange will be recessed into this void to ensure proper wall cladding alignment. See the Shower Wall & Shower Receptor installation instructions for more details.



IPC.1334/REV.8

ENDURANT® Washroom Systems

inpro.com • 800.222.5556 • 262.679.9010

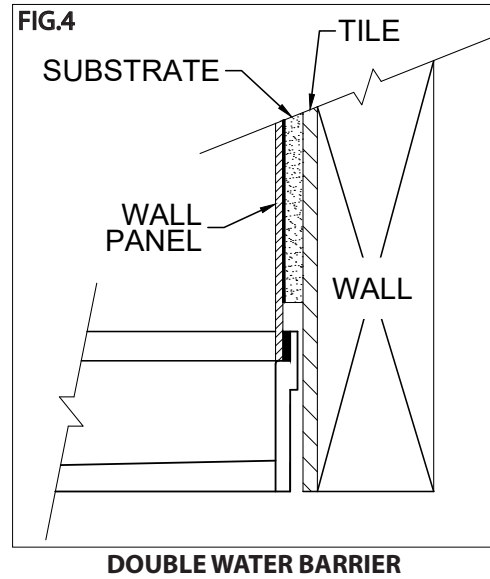
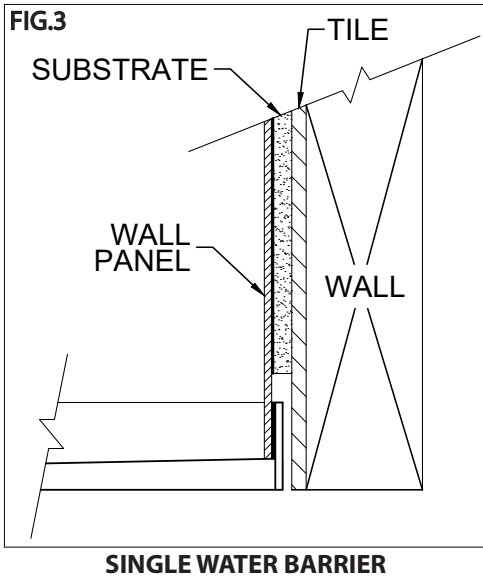
World Headquarters S80 W18766 Apollo Drive, Muskego, WI 53150 USA

Installation Hotline: 866.394.6776

inpro®

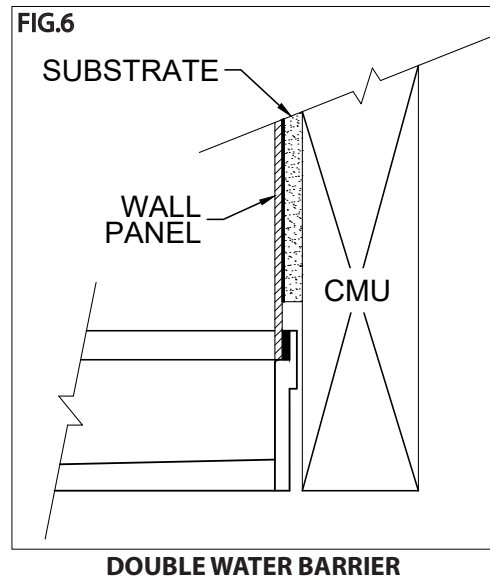
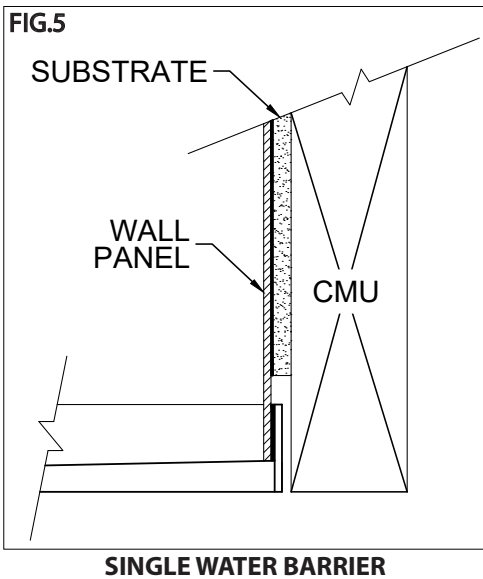
Prism™ Solid Surface Wall Panels Over Tile or CMU Supplement

Option 2: Install a substrate on top of the tile to create a void at the bottom of the wall. The water barrier/flange will be recessed into this void to ensure proper wall cladding alignment. See the Shower Wall & Shower Receptor installation instructions for more details.



Installing Wall Panels Over CMU along with a Prism Shower Receptor

When installing wall cladding over CMU along with a shower receptor, install a substrate on top of the CMU to create a void at the bottom of the wall. The water barrier/flange will be recessed into to this void to ensure proper wall cladding alignment. See the Shower Wall & Shower Receptor installation instructions for more details.



Prism™ Solid Surface Wall Panels Over Tile or CMU Supplement

Beveled Edge Trim:

Beveled Edge Trim (ENCMU096) is recommended to be used to cover the transition between the CMU/TILE and the 1/4" Prism™ wall cladding, when installed with a 5/8" substrate.

