

# Installation Instructions

## Fireline™ Water Guard® Fire Barrier Floor to Floor Bottom Mount

### Health & Safety

When working with this product, fibers that come in contact with skin may cause temporary irritation



Ventilate work area if possible



Cover exposed skin when working with product



Wear goggles when working with this product



Rinse all exposed skin with cold water before washing



Waste should be disposed of according to local regulations

STORE AND INSTALL BLANKETS SUCH THAT THE PRODUCT REMAINS DRY.

#### NOTES:

1. Verify that the structural gap and blockout dimensions are in conformance with submittal data before beginning installation. Certification of this product was completed by Guardian and Intertek Testing Laboratories. Product must be installed in accordance with these Installation Instructions.
2. If job site specific conditions exist, these general installation instructions do not take place of an Engineering Evaluation if required. Any modifications made to the product without documented manufacturing direction will void the warranty.
3. F520 Water Guard® Fire Barrier is delivered pre-assembled. Factory transitions/directional changes must be installed first.
4. It is recommended that Water Guard® be accessible from the top to best seal sections 3" [76mm] overlap and end/intermediate dams.
5. Clean Water Guard® of all debris prior to installing expansion joint cover. If expansion joint cover is not immediately installed, the Water Guard® must be protected from damage with a temporary cover (by others).

IPC.1994/REV.5

JOINTMASTER® Expansion Joint Systems

[inpro.com](http://inpro.com) • 800.222.5556 • 262.679.9010

World Headquarters S80 W18766 Apollo Drive, Muskego, WI 53150 USA

Installation Hotline: 866.394.6776

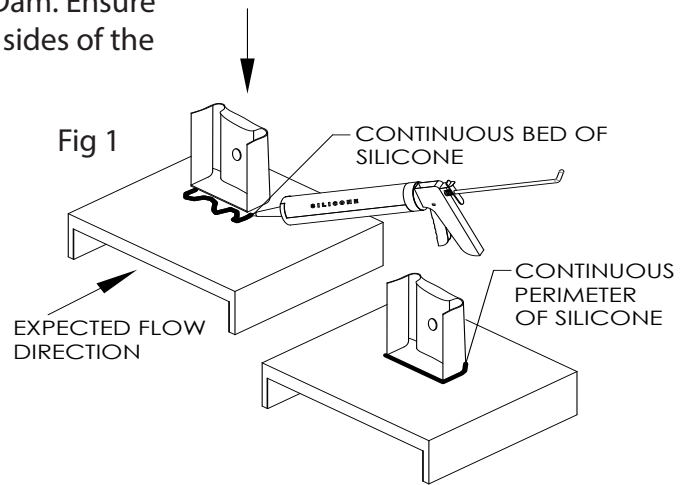
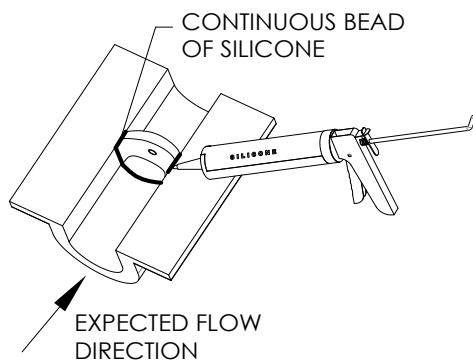
**inpro**®

# Installation Instructions

## Fireline™ Water Guard® Fire Barrier Floor to Floor Bottom Mount

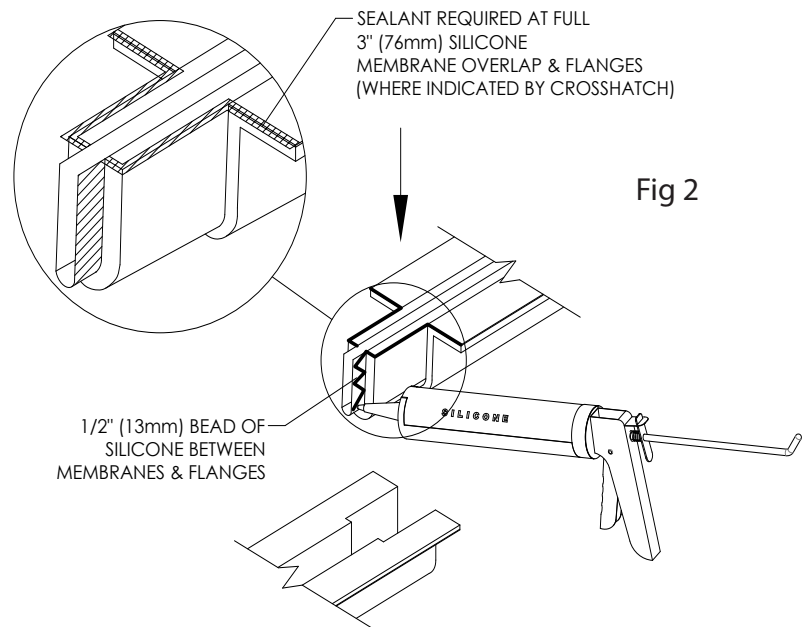
### Figure 1- End Dam and Intermediate Installation (If applicable)

1. Verify in field the spacing and location of each End Dam/Intermediate Dam.
2. Prior to installation, lay the Water Guard® flat and silicone the flap of the dam to the desired location on the Water Guard® blanket. Dam must be centered (width wise) on blanket.
3. Flap should be positioned towards the expected flow of water.
4. Allow silicone to cure per directions on the tube.
5. Install Water Guard® into joint. Bow the dam such that the convex side is facing to expected flow of water.
6. Apply silicone caulk at both sides of the perimeter of Dam. Ensure enough caulk is used to create a water tight seal at both sides of the perimeter.



### Figure 2- Silicone Membrane Overlap Installation

7. Silicone has a temperature range of -35°F (-37°C) to 140°F (60°C).
8. Apply 1/2" (13mm) wide bead of silicone (provided by JointMaster) 1" (25mm) from the end on to the next section without the overlap.
9. Press the silicone membrane overlap on to the next section.
10. Apply another 1/2" (13mm) bead of silicone on the overlap seam and the next section.
11. Finally put a bead on the seam of the galvanized flanges.



# Installation Instructions

## Fireline™ Water Guard® Fire Barrier Floor to Floor Bottom Mount

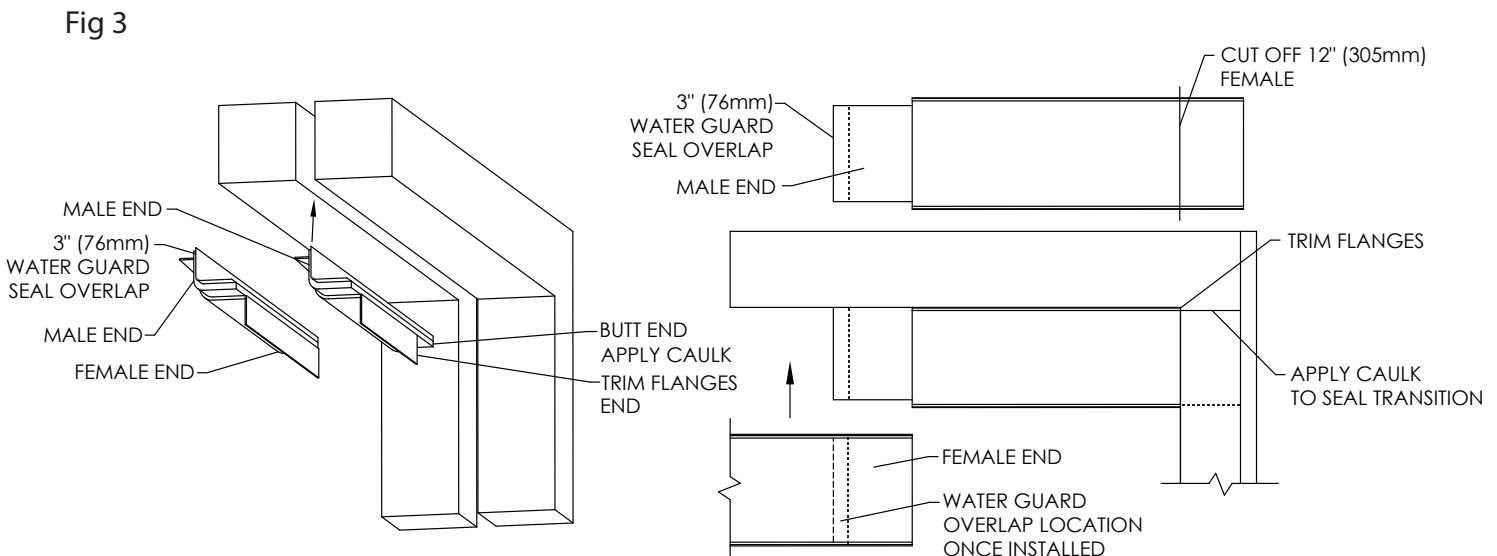
### Figure 3 General Installation

12. Remove the female end to create a butt end. Start at the outside wall with the butt end. Measure the depth of the wall to the back of the exterior cover, and cut the flange on the butt end that distance. Insert the end into the wall up to the exterior expansion cover. The F520 Water Guard® Fire Barrier has 12" (305mm) overlap at each end. One end is the male and the other is the female. Sections are 4' (1.2m) long.

13. Fasten fire blanket on one side of the joint only to allow access to seal the F520 Water Guard® seams at the 3" overlap. See previous page for F520 Water Guard® seam installation.

14. If the exterior wall is fire rated reference figure 1a vertical wall fire barrier instructions.

15. Complete the install by installing all the female to female transitions, sealing all F520 Water Guard® seams then fastening the second side.



# Installation Instructions

## Fireline™ Water Guard® Fire Barrier Floor to Floor Bottom Mount

Figure 3a

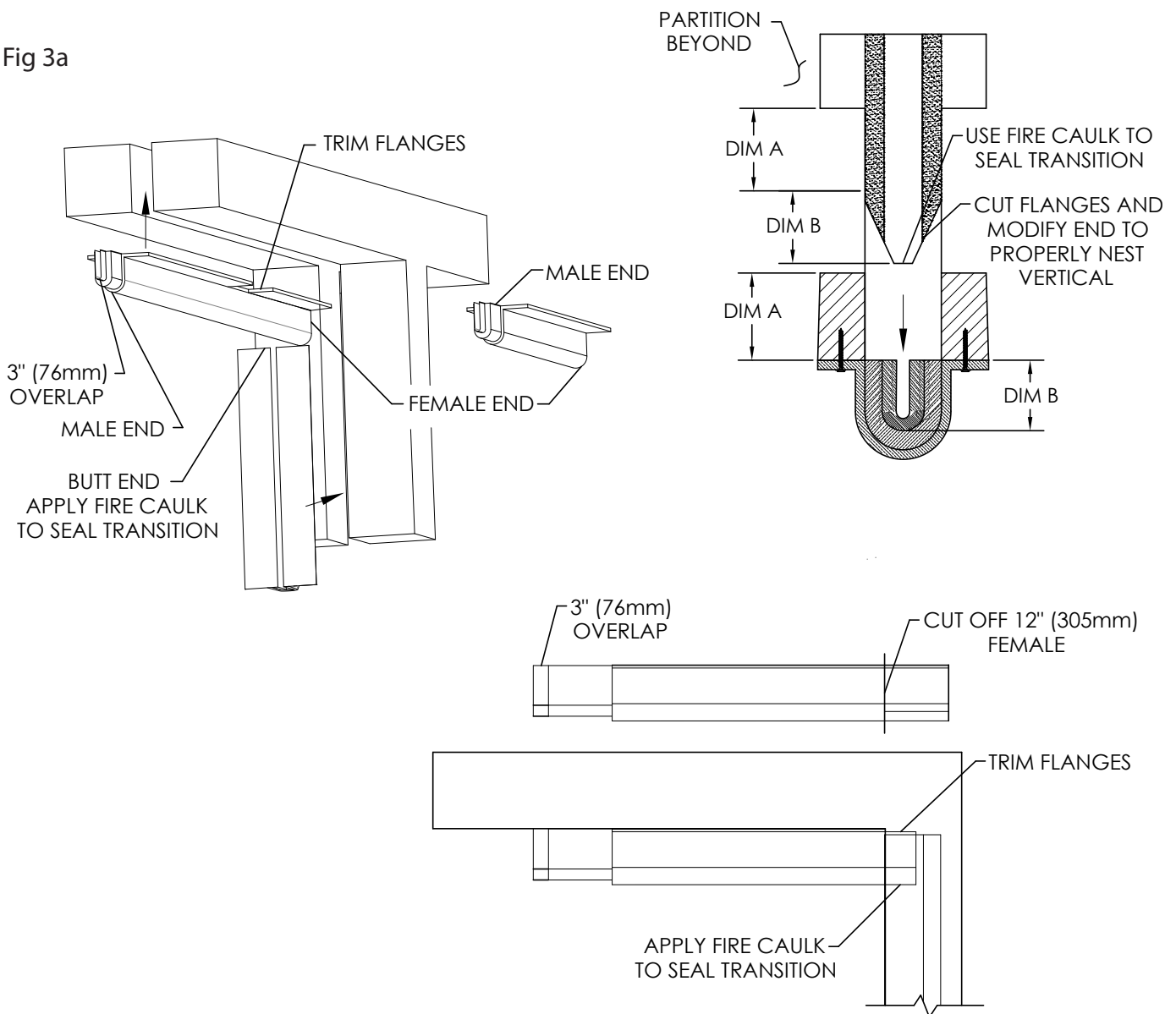
16. When you reach an interior wall measure the distance from the edge of the wall to the edge of the flange. Mark that distance on the flange of the next section of fire barrier. Measure the depth of the wall and trim the flanges that distance from the mark.

17. Slide the fire barrier thru the wall to the section of fire barrier. The trimmed flanges must line up with the wall.

18. If the wall is fire rated you must use a vertical butt end up to the bottom mount fire barrier.

19. Apply 3M CP25 Fire Caulk to the edge of the vertical butt end. Press tight to the bottom mount fire barrier. Be sure there are no voids between the two.

Fig 3a



# Installation Instructions

## Fireline™ Water Guard® Fire Barrier Floor to Floor Bottom Mount

### Figure 4 & 4a

20. Flanges are galvanized metal. Ensure flanges are pressed tight and held flat to the substrate.

21. Utilize hardware appropriate for the substrate (supplied by others) with a max spacing of 6" (152mm) O.C.

22. Install hardware on only one side of the joint to allow access to the 3" wide silicon flashing F520 Water Guard® seams. Allow silicon to cure per directions on the tube, then finish installing hardware on second side.

Examples of hardware for various conditions are:

- Floor- Hilti# X-U 32 P8 S15 pin with washer x 1 1/4" (32mm) or 1/4" (6mm) x 1 1/4" (32mm) concrete/ wood screw with washer
- Wall- Hilti# X-U 32 P8 S15 pin with washer x 1 1/4" (32mm) or Min 1/4" (6mm) x 1 1/4" (32mm) concrete/ self drilling screw with washer

Fig 4

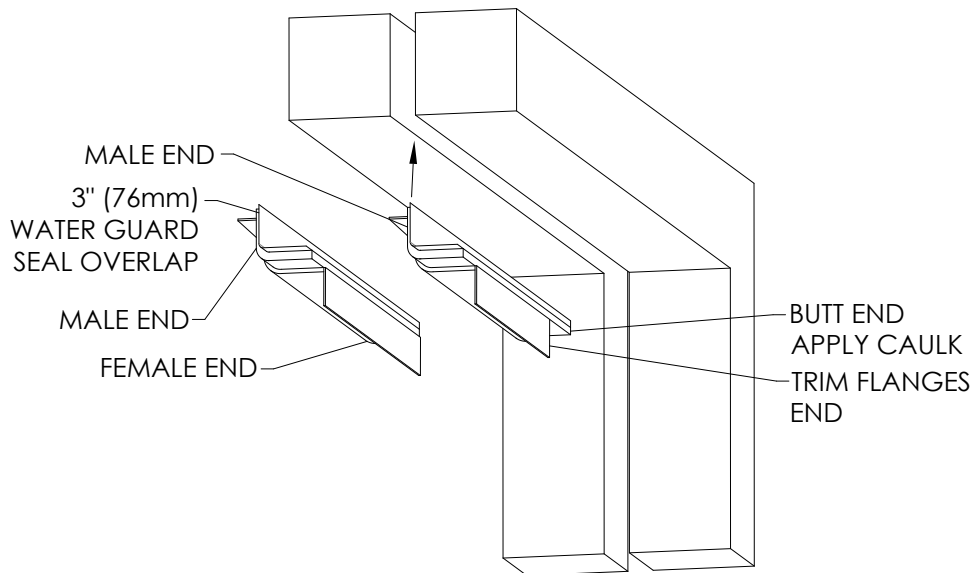
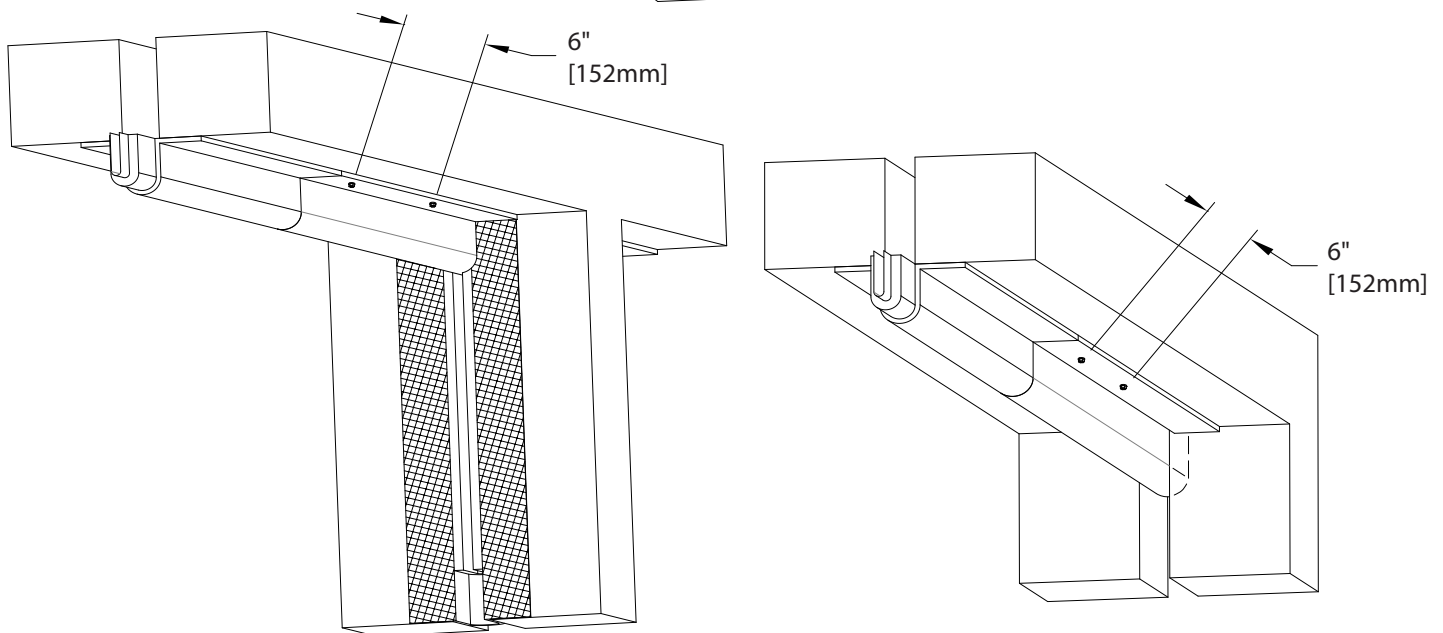


Fig 4a



JOINTMASTER® Expansion Joint Systems

inpro.com • 800.222.5556 • 262.679.9010

World Headquarters S80 W18766 Apollo Drive, Muskego, WI 53150 USA

Installation Hotline: 866.394.6776

**inpro**®

# Installation Instructions

## Fireline™ Water Guard® Fire Barrier Floor to Floor Bottom Mount

### Figure 5 & 5a Floor/ Wall Installation

23. Fasten the vertical wall flange first. make sure the top of blanket in even with the bottom of the floor. Then fasten the horizontal to the floor.

Fig 5

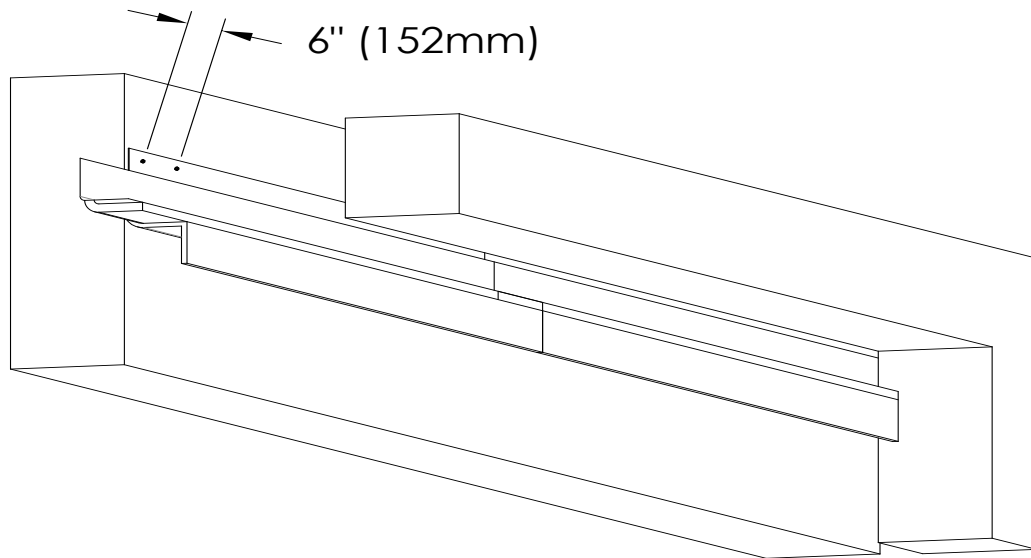
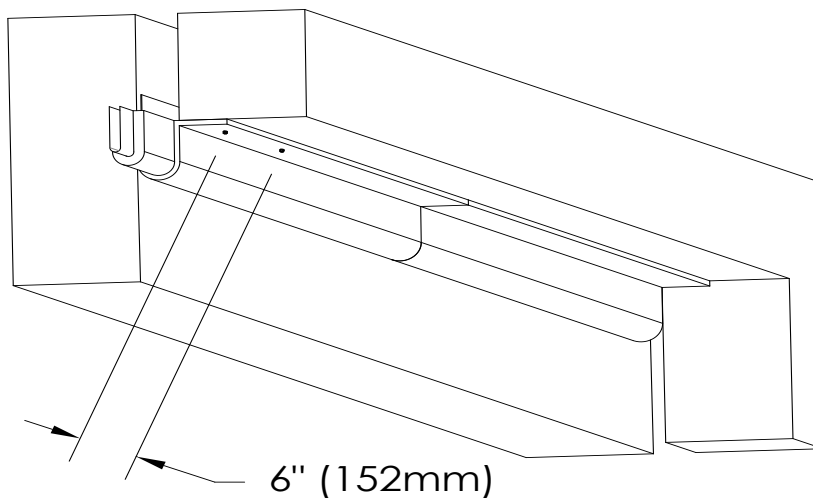


Fig 5a



# Installation Instructions

## Fireline™ Water Guard® Fire Barrier Floor to Floor Bottom Mount

### Figure 6 - Drain Connection

24. The optional drain is 1/2" (13mm) ID. Spacing to be determined prior to ordering by the Plumbing Engineer of record. The customer is responsible for drain attachment to project plumbing system.
25. Each drain tube is provided with a filter designed to prevent clogging. Ensure debris has been removed from Water Guard® blanket prior to the installation of the cover.
26. Filter to be installed, centered over the drain tube in the field. Install the filter with white silicone caulk (provided by Inpro) over the drain prior to installing the blanket assembly into the joint.
27. Adhere filter directly to the existing silicone cloth while the blanket system lies flat. Allow for the silicone caulk to cure before installing the blanket assembly into the joint.

