

Parking Protection



Architectural Products

inpro[®]

They're not just Expansion Joint Systems.

They're masters of movement.

Acoustic authorities. Waterproofing warriors. Forbidders of Fire. Air and moisture mercenaries. They're on a mission to maintain the integrity of buildings in the face of earthquakes, hurricanes, fires and just plain everyday forces. Often the unsung heroes of building protection, they're built to do what they do every day because that's what it takes to keep people safe.

06

Facility Protection

- 06 Speed Guards
- 06 Tire Stops
- 06 Corner Guards
- 07 Wall Guards
- 07 Dock Bumpers



ChristChurch, Justice + Emergency Services Precinct | Christchurch, New Zealand
353 Wall + Ceiling System

why inpro®

Our Expansion Joint + Fire Barrier Systems are engineered to handle the unique conditions of your building.

engineered obsessively

We constantly test and review our systems for continuous innovation to provide you with the best solutions. Yeah we're obsessed, but in a good way.

protected by design

From ensuring smooth transitions for rolling equipment carts, gurneys and wheelchairs, to preventing the spread of smoke and fire, we integrate building protection right into the product's design.

manufactured with care

As the manufacturer, we verify that only the best products are shipped out to your project.

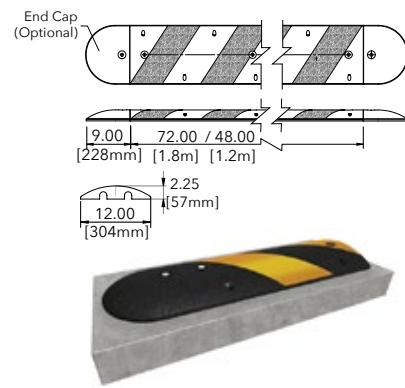
Parking Protection

Parking structures are incredibly harsh environments. Without reliable protection, you face an endless maintenance war against wear and tear.

JOS-SPD 1200/1800 - Speed Guard



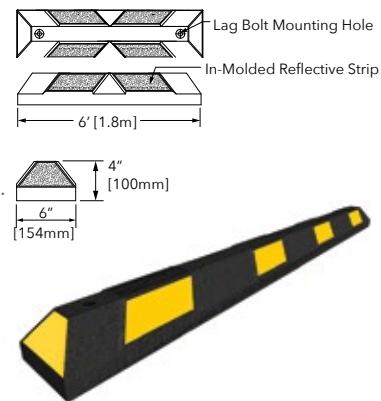
- Reduces vehicle speeds to 2-5mph (3km/h-8km/h).
- Made of environmentally responsible shredded tires, diverting 3.2 (SPD 1200) to 5.1 (SPD 1800) tires from the landfill with every piece ordered.
- Reflective in-molded pavement marking strip alerts driver of the tire stops presence in low light situations.
- Luminous "Cat Eye" reflectors light up as vehicles approach.
- Ideal for areas with heavy pedestrian flow such as entrances or crosswalks.
- Greatly reduces risks of pedestrian-car collisions.
- Highly resilient material resists U.V., moisture, oil and extreme temperatures and will never chip, crack or fade, plus it's capable of conforming to uneven surfaces.



JOS-TRSTP 500/1800 - Tire Stop



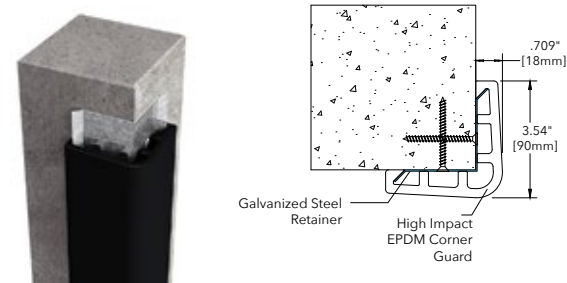
- Tire stop is available in two (2) different lengths - T1800: 6' (1.8M) and T500: 22" (.5m).
- Prevents drivers from over parking and encroaching into walkways or other parking spots.
- Highly resilient material resists U.V., moisture, oil, extreme temperatures and will never chip, crack, or fade; plus its capable of conforming to uneven surfaces.
- Made of environmentally responsible shredded tires, diverting 1 (TRSTP 500) to 3.4 (TRSTP 1800) tires from the landfill with every piece ordered.
- Reflective in-molded pavement marking strip alerts driver of the tire stops presence in low light situations.
- Available in three (3) colors to designate space type or for facility branding: Black, Blue and Terracotta.
- Optional in-molded pavement strip colors: White or Yellow.



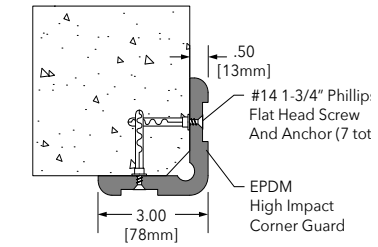
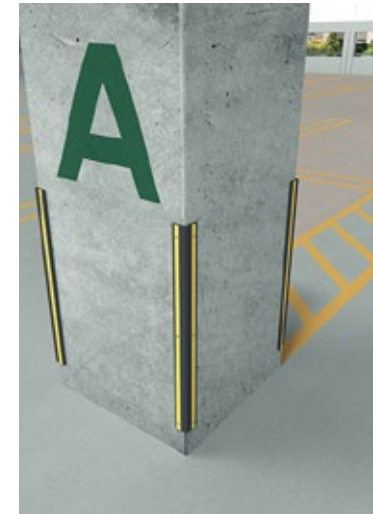
JOS-CRNR 090 - High Impact Corner Guards



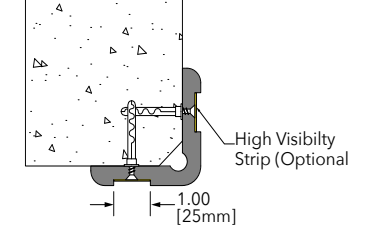
- Corner guard height: 39.3" (1m).
- The gold standard for corner protection.
- Easy to install and easy to replace if damaged.
- Large collision chambers cushion door impacts better than any other corner guard. Also, it is more forgiving on side panels and plastic bumpers.
- Heavy Duty EPDM corner guard snaps onto aluminum retainer clips.
- Galvanized steel retainer clip protects the corner's structural integrity.



JOS-CRNR 075 - Standard Corner Guards



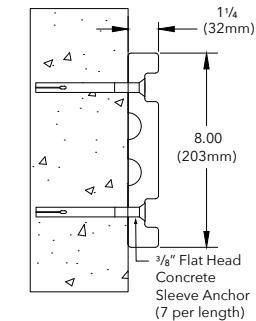
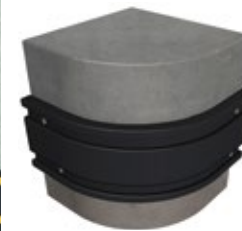
(JOS-CRNR 075 system shown)



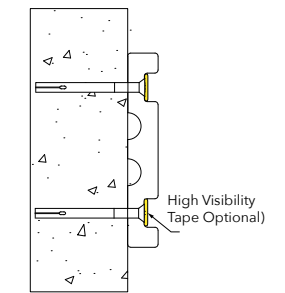
(JOS-CRNR 075 system shown) (optional High-Visibility strip shown)

- Corner guard height: 39.3" (1m).
- Economic solution to protect column and wall corners from impact.
- Aids in preventing damage to customers' vehicles.
- Capable of withstanding moderate impact from vehicles.
- Optional: high visibility strip helps corner guard stand out in low-light areas.

JOS-WALL 200 - Wall Guard



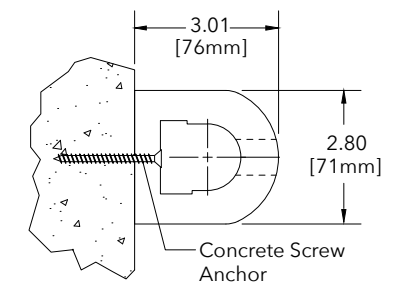
(JOS-WALL 200 system shown)



(JOS-WALL 200 system shown) (optional High-Visibility strip shown)

- Wall guard length: 120" (3m) 40" (1m).
- The gold standard for heavy impact facility wall protection.
- Capable of conforming to straight and curved wall conditions.
- Can wrap circular columns the diameter of 18" (450mm) and greater.
- Optional: High visibility strip helps wall guard stand out in low-light areas.

JOS-DOCK 075 - Dock Bumper



- Standard length of 24" (610mm). 1 meter is 40 inches.
- Dock Bumper is made of thick 3/4" (19mm) EPDM capable of withstanding the repeated forces encountered within loading docks.
- Mounted using Heavy Duty fasteners. Anchor locations field drilled to meet project specific requirements.



obsessed with protecting buildings®

How they look. How they function.
And how they protect the health and safety
of the people who use them every day.

That's why we make hundreds of architectural
products all under one roof and work tirelessly to
make sure you and your buildings succeed.

Yeah, we are obsessed. But we wouldn't
have it any other way.

inpro.com

800.222.5556

World Headquarters
580 W18766 Apollo Drive
Muskego, WI 53150 USA

IPC® Door + Wall Protection
Ascend® Elevator Protection
Juniper® Commercial Window Treatments
Clickeze® Privacy Systems
Endurant® Washroom Systems
SignScape® Architectural Signage
JointMaster® Expansion Joint Systems

©2019 Inpro Corporation

