

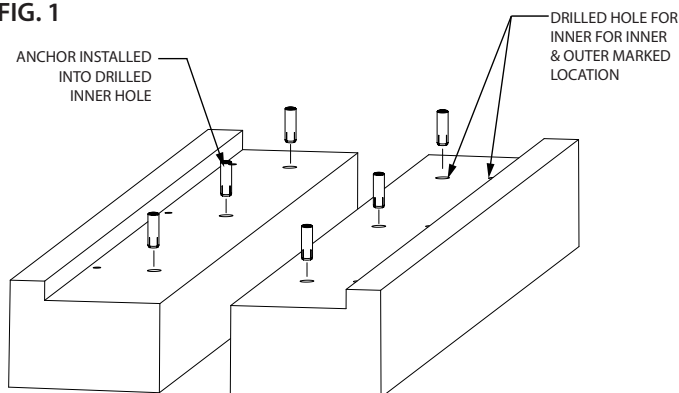
Installation Instructions

Joint System: 787NS-A01

Note: Verify that the structural gap is in conformance with submittal data before beginning installation. If this is a Fire Rated Assembly, install the fire barrier before the Architectural Joint System. Refer to the fire barrier instructions for specific system installation.

For installations subject to non-conditioned applications, a thermal gap is required between the end-to-end connections of the frames and covers. When installing in warm conditions (ie- 75F / 22C or greater), the covers can abut each other directly, however during cooler weather installs (70F / 21C or less), the recommended gap width between frames and covers is 1/8" (3mm) min. Prior to installing the next frame in sequence, apply polyurethane sealant (By Others) to the end of the frame / cover before seating the next profile.

FIG. 1



1. Install the architectural joint system on a level surface within the blockout. The top of the aluminum frame should coincide with the finish floor. This may require adding leveling compound to raise the tops of the frames.

Figure 1

2. Place the recessed aluminum frames per architectural detail.

*Note: frame location varies per joint width.

3. Mark the pre-drilled hole locations.

4. Remove the recessed frames from the blockouts.

5. Drill outside set of marked holes on the substrates using a 3/8" (10 mm) concrete drill bit. Holes should be drilled 2 3/4" (70mm) deep.

5a. Drill inside set of marked holes on the substrate using a 1/2" (12mm) concrete drill bit. Inner hole should be drilled 1 5/8" (41mm) deep from top of concrete.

5b. Seat the drop in anchor to the base of the hole. Insert the supplied punch into the drop in anchor and hammer down 4-5 times to activate the internal plug.

6. Return the recessed frames in position over the drilled hole locations and secure in place with (JK214) 3/8" x 1 1/4" flat head stainless steel screw for each inner hole and (JK173) 3/8" x 2 1/2" hex head concrete screw anchor for each outer hole.

Figure 2

7. Slide the centerbar spring assembly in the recessed frames. 7 per 10' (3 meters) frame 18" (457mm) on center. Locate each centerbar spring assembly directly in line with each countersunk hole in the aluminum cover plate. At the last section slide the correct quantity of centerbar spring assemblies in the recessed frames before mounting to the concrete slab.

Suggested: Secure placement of spring centerbar assemblies with a piece of tape or backer rod.

FIG. 1a

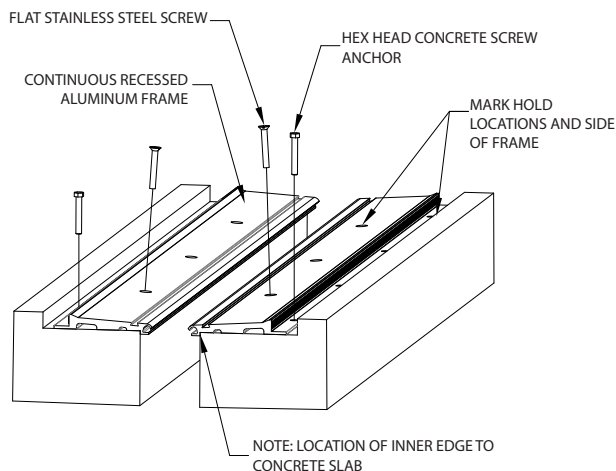
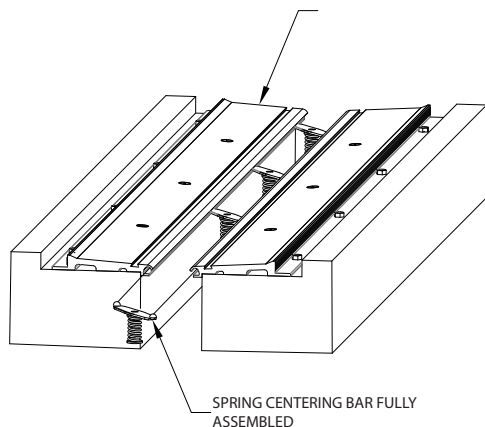


FIG. 2



IPC.3419/REV3

JOINTMASTER® Expansion Joint Systems

inpro.com • 800.222.5556 • 262.679.9010

World Headquarters S80 W18766 Apollo Drive, Muskego, WI 53150 USA

Installation Hotline: 866.394.6776

inpro®

Installation Instructions

Joint System: 787NS-A01

FIG. 3

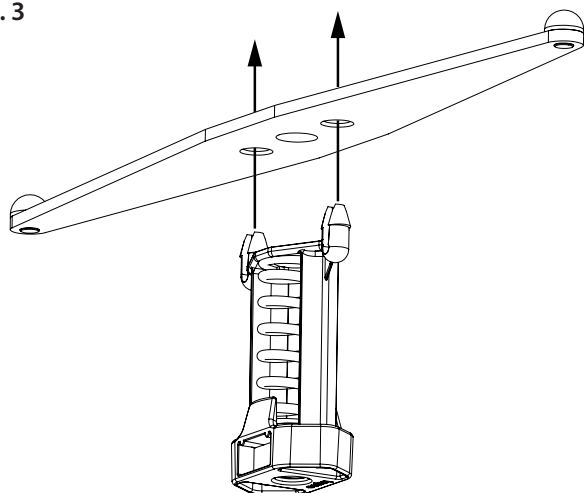


Figure 3

8. Assemble Centerbar & Spring Clip: Spring Clip should be installed opposite the Centerbar pins, with the tangs (located on top of the SpringClip) going into the holes with the angled edge.

Figure 3a

9. Place the aluminum cover plate countersink over each centerbar spring assembly hole. Use one (JK176) 3/8"-16 x 4" flat head machined screw for each countersunk hole. By hand, thread thru the centerbar spring assembly until the screw is fully seated in the countersink. Mark the screw head and turn the screw clockwise 6 complete rotations. **DO NOT OVER TIGHTEN!** This provides 19# (8.6kg) of preload pressure for the spring.

FIG. 3a

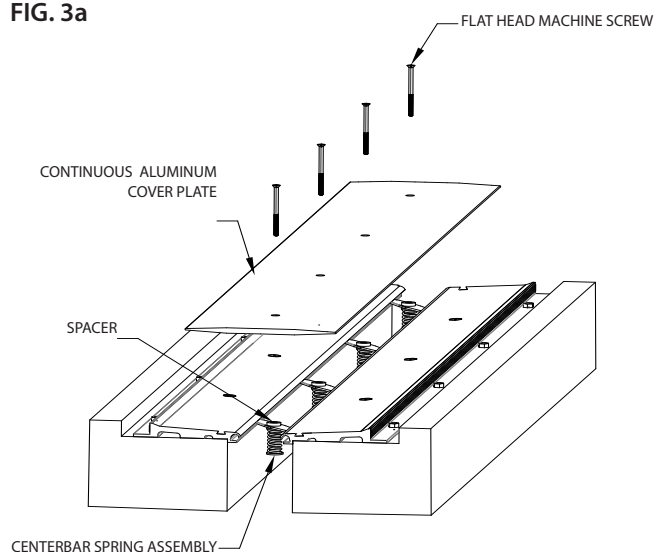


Figure 4

10. Apply masking tape on the concrete slab next to the blockout for protection.

11. Backfill the blockout with epoxy grout level with the adjacent concrete slab.

12. Remove masking tape from the concrete slab.

13. Clean the exposed surfaces with a non-solvent cleaner, such as 409, as required.

FIG. 4

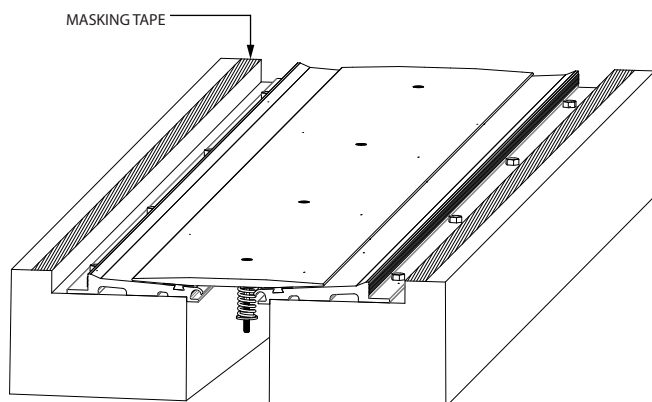
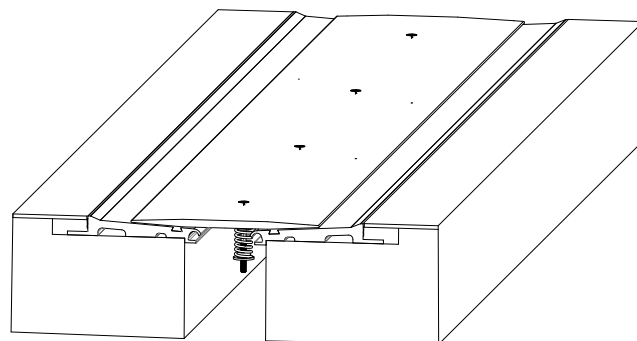


FIG. 4a



JOINTMASTER® Expansion Joint Systems

inpro.com • 800.222.5556 • 262.679.9010

World Headquarters S80 W18766 Apollo Drive, Muskego, WI 53150 USA

Installation Hotline: 866.394.6776

inpro®