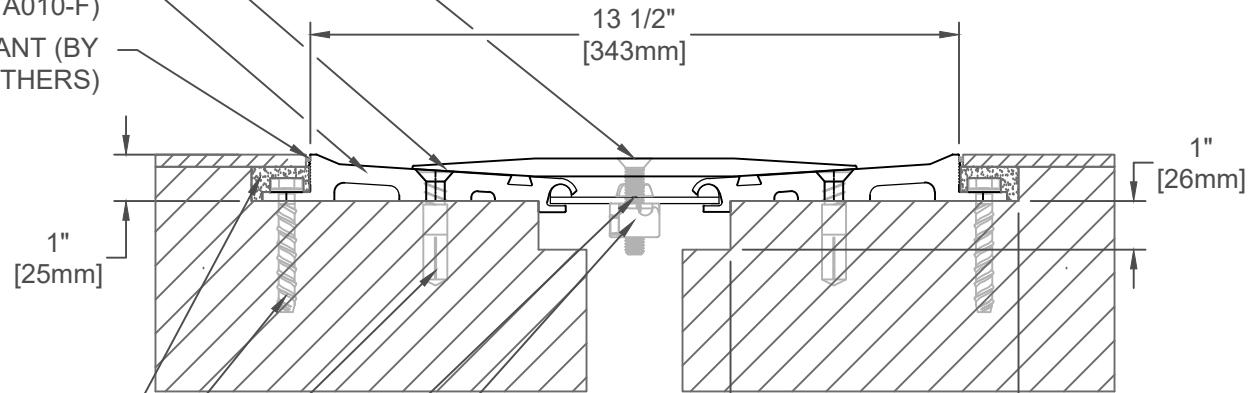


3/8-16 X 2" [51mm L.] PHILLIPS
FLAT HEAD MACHINE SCREW (7
PER PLATE @ 18" [457mm] O.C.)
(JKSS19)

3/8" [10mm] THICK CONT. ALUM.
TAPERED CENTER PLATE (J7C021)

CONT. ALUM. RECESSED FRAME
(J7A010-F)

1/4" MAX. GAP SEALANT (BY
OTHERS)



HIGH STRENGTH EPOXY
GROUT (BY OTHERS)

HEX HEAD CONC. SCREW (7 PER
FRAME @ 18" [457mm] O.C.) (JK173)

3/8" x 1 1/4" [M10x32] FLAT HEAD
DROPIN ANCHOR (6 PER FRAME @
18" [457mm] O.C.) (JK214)

STEEL CENTERING BAR (7 PER
PLATE @ 18" [457mm] O.C.)
(J7J006-HDBW)

INJECTION MOLDED CLIP WITH
3/8-16 SQUARE NUT
(J7J002-INJVRA)

787NS-A01-050

JOINT WIDTH		MOVEMENT				VERTICAL	
US	mm	MINIMUM	US	mm	MAXIMUM	US	mm
2"	50	1"	25	5"	127	1"	25

FINISH: MILL
PROJECT:
CUSTOMER:
LOCATION:

APPLICATION-
FLOOR/FLOOR
INTERIOR STRUCTURE

DATE:	4-29-24
SCALE:	1:4
DOC:	CADJM.246/R5



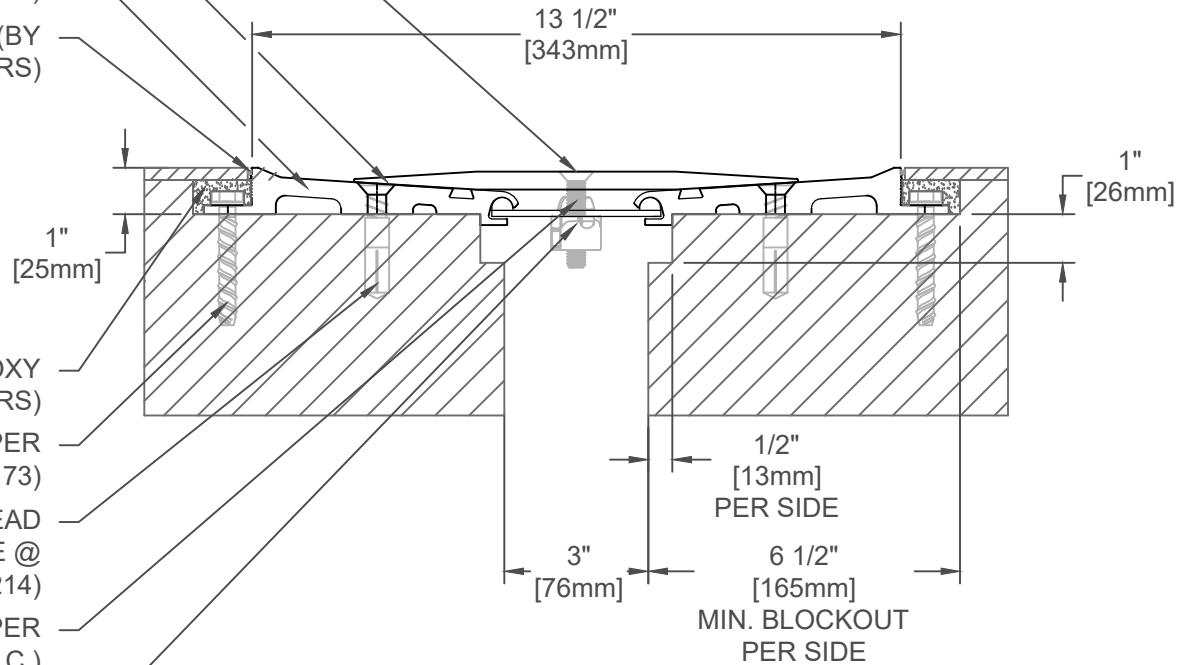
For More Information Visit: Inprocorp.com

3/8-16 X 2" [51mm L.] PHILLIPS
FLAT HEAD MACHINE SCREW (7
PER PLATE @ 18" [457mm] O.C.)
(JKSS19)

3/8" [10mm] THICK CONT. ALUM.
TAPERED CENTER PLATE (J7C021)

CONT. ALUM. RECESSED FRAME
(J7A010-F)

1/4" MAX. GAP SEALANT (BY
OTHERS)



HIGH STRENGTH EPOXY
GROUT (BY OTHERS)

HEX HEAD CONC. SCREW (7 PER
FRAME @ 18" [457mm] O.C.) (JK173)

3/8" x 1 1/4" [M10x32] FLAT HEAD
DROPIN ANCHOR (6 PER FRAME @
18" [457mm] O.C.) (JK214)

STEEL CENTERING BAR (7 PER
PLATE @ 18" [457mm] O.C.)
(J7J006-HDBW)

INJECTION MOLDED CLIP WITH
3/8-16 SQUARE NUT
(J7J002-INJVRA)

787NS-A01-075

JOINT WIDTH		MINIMUM		MOVEMENT MAXIMUM		VERTICAL	
US	mm	US	mm	US	mm	US	mm
3"	76	1 1/2"	38	6"	152	1"	25

FINISH: MILL
PROJECT:
CUSTOMER:
LOCATION:

APPLICATION-
FLOOR/FLOOR
INTERIOR STRUCTURE

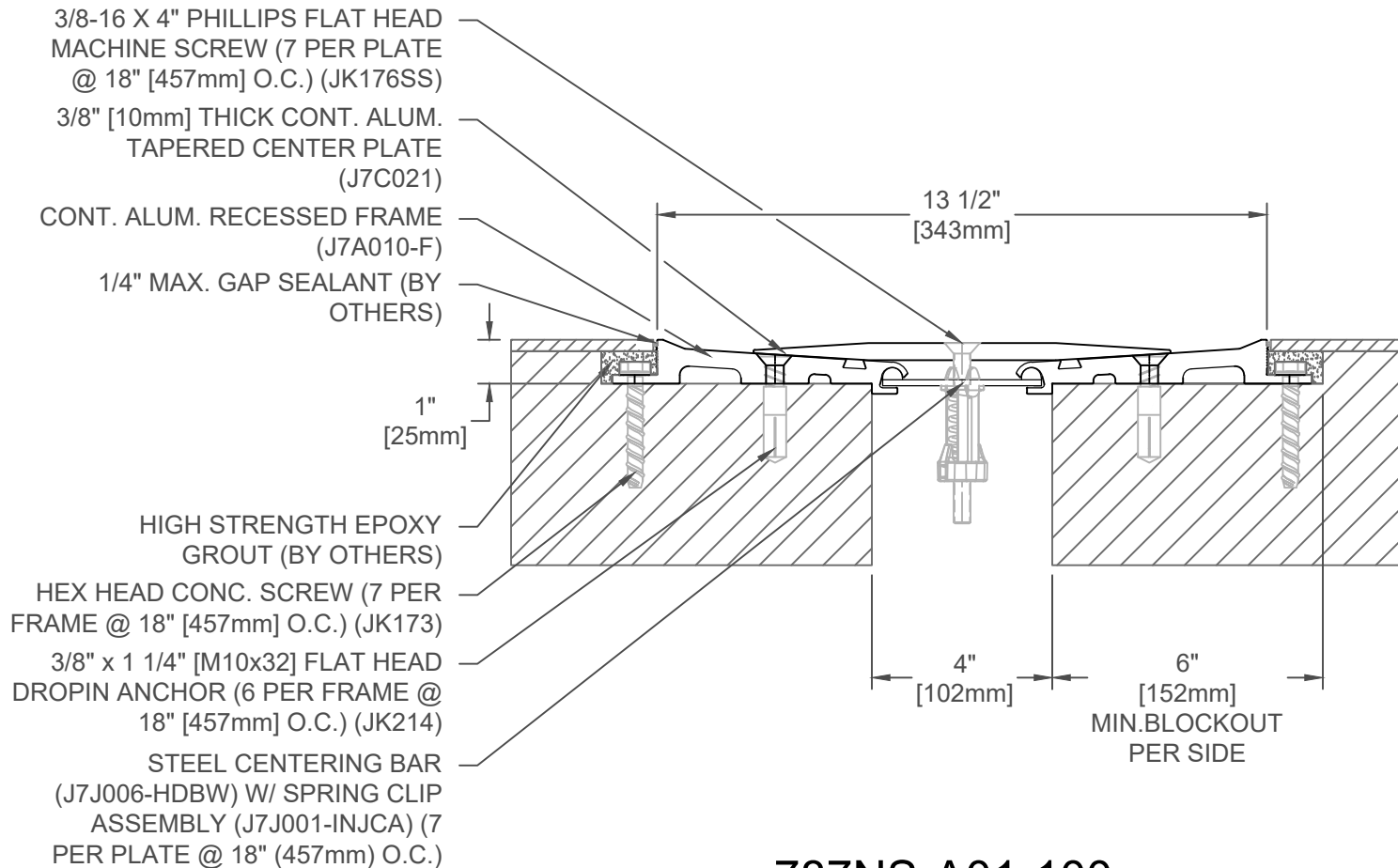
DATE: 4-29-24

SCALE: 1:4

DOC: CADJM.246/R5

inpro.

For More Information Visit: Inprocorp.com



787NS-A01-100

JOINT WIDTH		MINIMUM		MOVEMENT MAXIMUM		VERTICAL	
US	mm	US	mm	US	mm	US	mm
4"	102	2"	51	8	203	1"	25

FINISH: MILL
PROJECT:
CUSTOMER:
LOCATION:

APPLICATION-
FLOOR/FLOOR
INTERIOR STRUCTURE

DATE:	4-29-24
SCALE:	1:4
DOC:	CADJM.246/R5

inpro.

For More Information Visit: Inprocorp.com

3/8-16 X 4" PHILLIPS FLAT HEAD
MACHINE SCREW (7 PER PLATE
@ 18" [457mm] O.C.) (JK176SS)

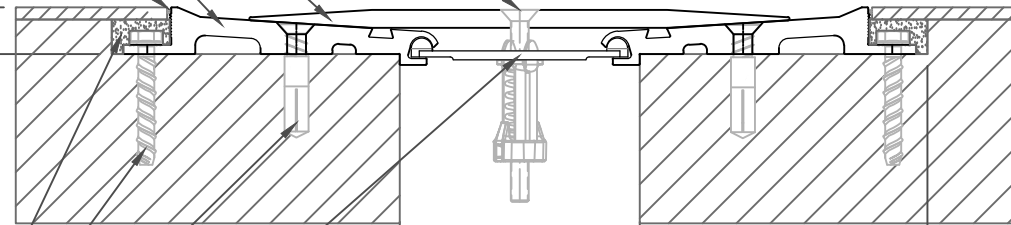
3/8" [10mm] THICK CONT. ALUM.
TAPERED CENTER PLATE (J7C022)

CONT. ALUM. RECESSED
FRAME (J7A010-F)

1/4" MAX. GAP SEALANT (BY
OTHERS)

1"
[25mm]

14 1/2"
[369mm]



HIGH STRENGTH EPOXY
GROUT (BY OTHERS)

HEX HEAD CONC. SCREW (7 PER
FRAME @ 18" [457mm] O.C.) (JK173)

3/8" x 1 1/4" [M10x32] FLAT HEAD
DROPIN ANCHOR (6 PER FRAME @
18" [457mm] O.C.) (JK214)

STEEL CENTERING BAR
(J7J012-HDBW) W/ SPRING CLIP
ASSEMBLY (J7J001-INJCA) (7
PER PLATE @ 18" (457mm) O.C.)

5"
[127mm]

6"
[152mm]
MIN. BLOCK
PER SIDE

787NS-A01-125

JOINT WIDTH		MINIMUM		MOVEMENT MAXIMUM		VERTICAL	
US	mm	US	mm	US	mm	US	mm
5"	127	2 1/2"	25	10"	254	1"	25

FINISH: MILL
PROJECT:
CUSTOMER:
LOCATION:

APPLICATION-
FLOOR/FLOOR
INTERIOR STRUCTURE

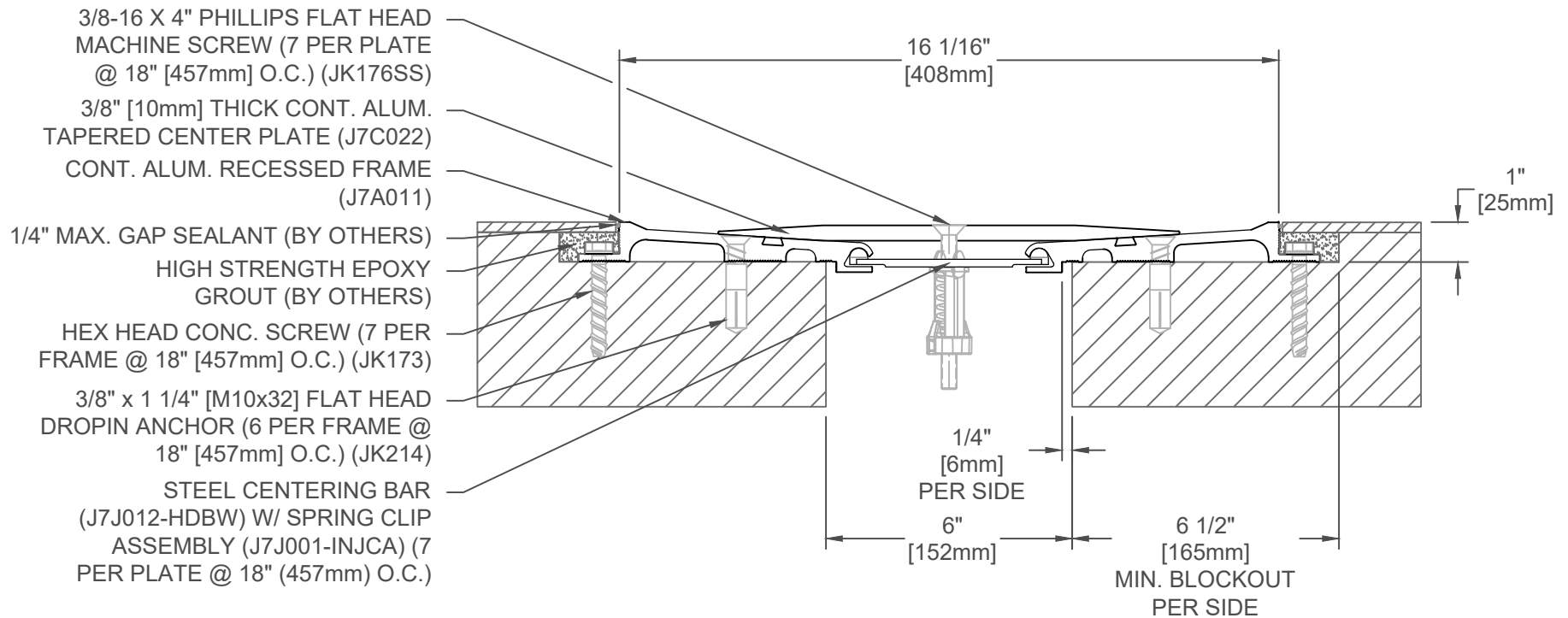
DATE: 4-29-24

SCALE: 1:4

DOC: CADJM.246/R5

inpro.

For More Information Visit: Inprocorp.com



787NS-A01-150

JOINT WIDTH		MOVEMENT					
		MINIMUM		MAXIMUM		VERTICAL	
US	mm	US	mm	US	mm	US	mm
6"	152	3"	76	12	305	1"	25

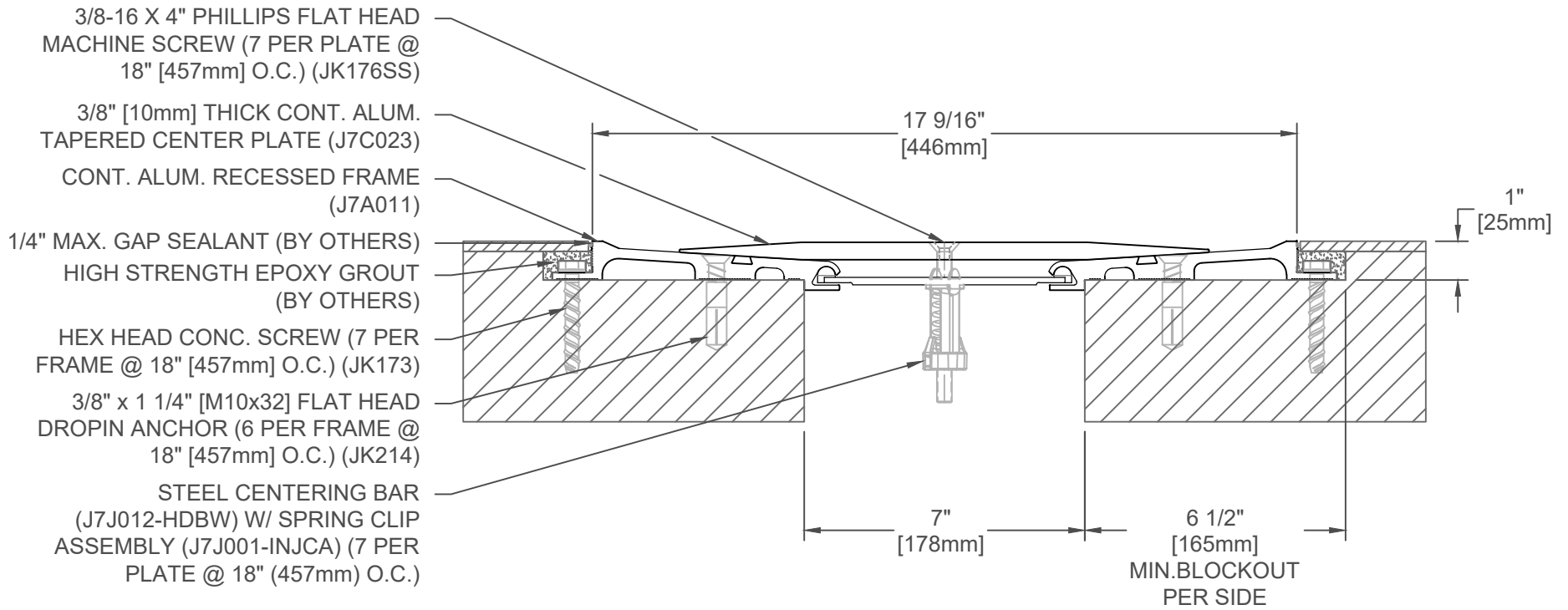
FINISH: MILL
PROJECT:
CUSTOMER:
LOCATION:

APPLICATION-
FLOOR/FLOOR
INTERIOR STRUCTURE

DATE:	4-29-24
SCALE:	1:4
DOC:	CADJM.246/R5

inpro.

For More Information Visit: Inprocorp.com



787NS-A01-175

JOINT WIDTH		MINIMUM		MOVEMENT MAXIMUM		VERTICAL	
US	mm	US	mm	US	mm	US	mm
7"	178	3 1/2"	89	14"	356	1"	25

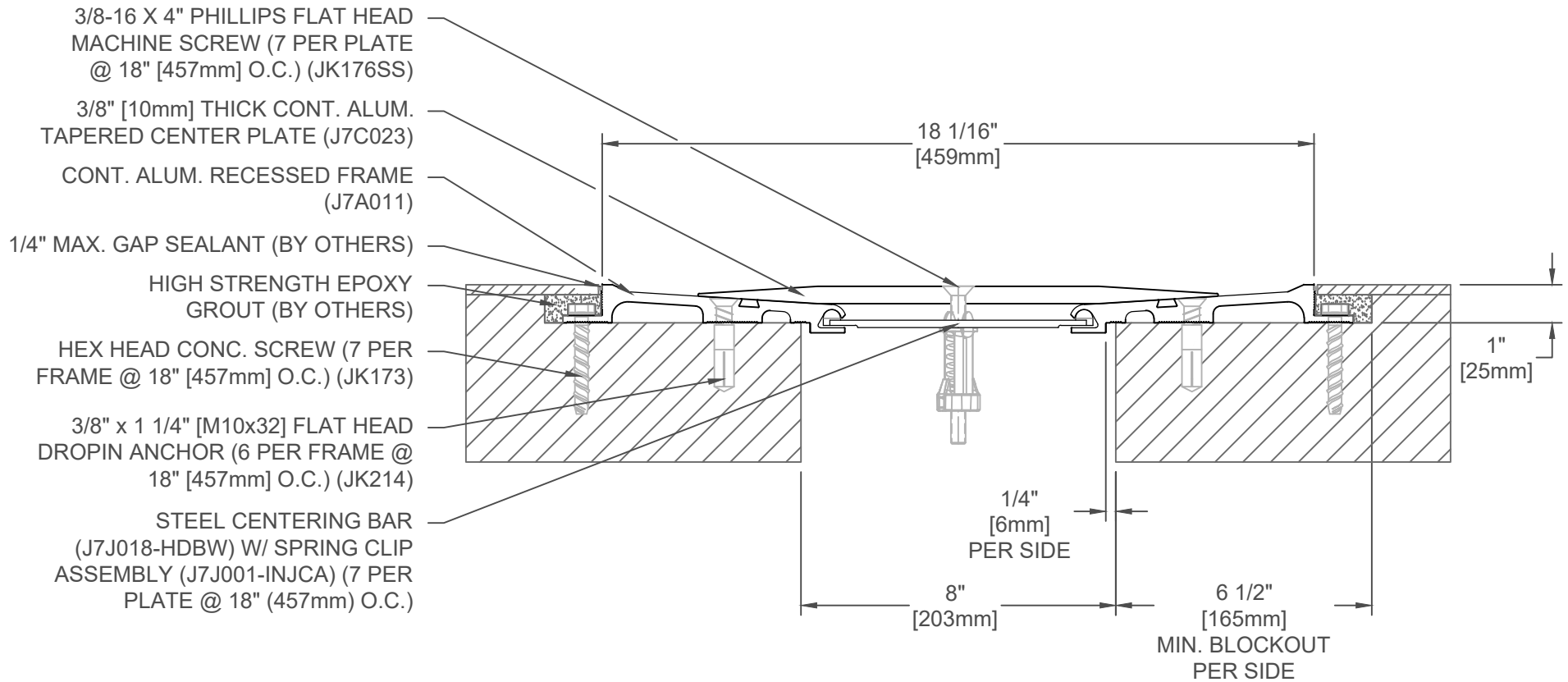
FINISH: MILL
PROJECT:
CUSTOMER:
LOCATION:

APPLICATION-
FLOOR/FLOOR
INTERIOR STRUCTURE

DATE:	4-29-24
SCALE:	1:4
DOC:	CADJM.246/R5

inpro.

For More Information Visit: Inprocorp.com



787NS-A01-200

JOINT WIDTH		MINIMUM		MOVEMENT MAXIMUM		VERTICAL	
US	mm	US	mm	US	mm	US	mm
8"	203	3 1/4"	83	14"	356	1"	25

FINISH: MILL
PROJECT:
CUSTOMER:
LOCATION:

APPLICATION-
FLOOR/FLOOR
INTERIOR STRUCTURE

DATE:	4-29-24
SCALE:	1:4
DOC:	CADJM.246/R5

inpro.

For More Information Visit: Inprocorp.com