

FINISH: MILL
PROJECT:
CUSTOMER:
LOCATION:

APPLICATION-
CURB MOUNTED CENTERING BAR
ROOF/ROOF CONDITION

DATE:	7-21-15
SCALE:	1:2
DOC:	CADJM.009/R7

STAINLESS PAN HEAD MACHINE
SCREW W/ NEOPRENE
WEATHER WASHER (7 PER
FRAME) (JKSS15)

CONT. VINYL GASKET
(J3D505-M)

CONT. ALUM. PLATE
(J6C102-F) 6" [152mm]
SPLICE PLATE (J6C102-FSP)

CONT. ALUM. SURFACE
MOUNT FRAME (SET IN
SEALANT BY OTHERS) (J6A103)

WOOD CURB & ROOFING
MEMBRANE (BY OTHERS) REF.
STANDARD CURB DETAIL FOR
MEMBRANE LAYERING

OPTIONAL CAULKING
(BY OTHERS)

INJECTION MOLDED CLIP
WITH 1/4-20 SQUARE NUT
(J4J002-INJRVA)

8 7/8"
[226mm]

5 1/4"
[133mm]

1 3/16"
[30mm]

2"
[51mm]

STAINLESS STEEL
CENTERING BAR (7 PER
PLATE @ 18" [457mm]
O.C.) (J7J006-HDBW)

#12 x 1 1/2" [M5x38]
STAINLESS PAN HEAD
SCREW THRU
NEOPRENE WEATHER
WASHER (7 PER FRAME
@ 18" [457mm] O.C.)
(JKSS28)

REINF. EPDM VAPOR BARRIER
(JL009-RVB) NOTE: SET IN CONT.
BED OF BUTYL SEALANT (BY
OTHERS) TERMINATE RVB AT
OUTSIDE EDGES OF SYSTEM

661-A01-050

JOINT WIDTH		MOVEMENT			
		MINIMUM		MAXIMUM	
US	mm	US	mm	US	mm
2"	51	3/4"	19	3-1/2"	89

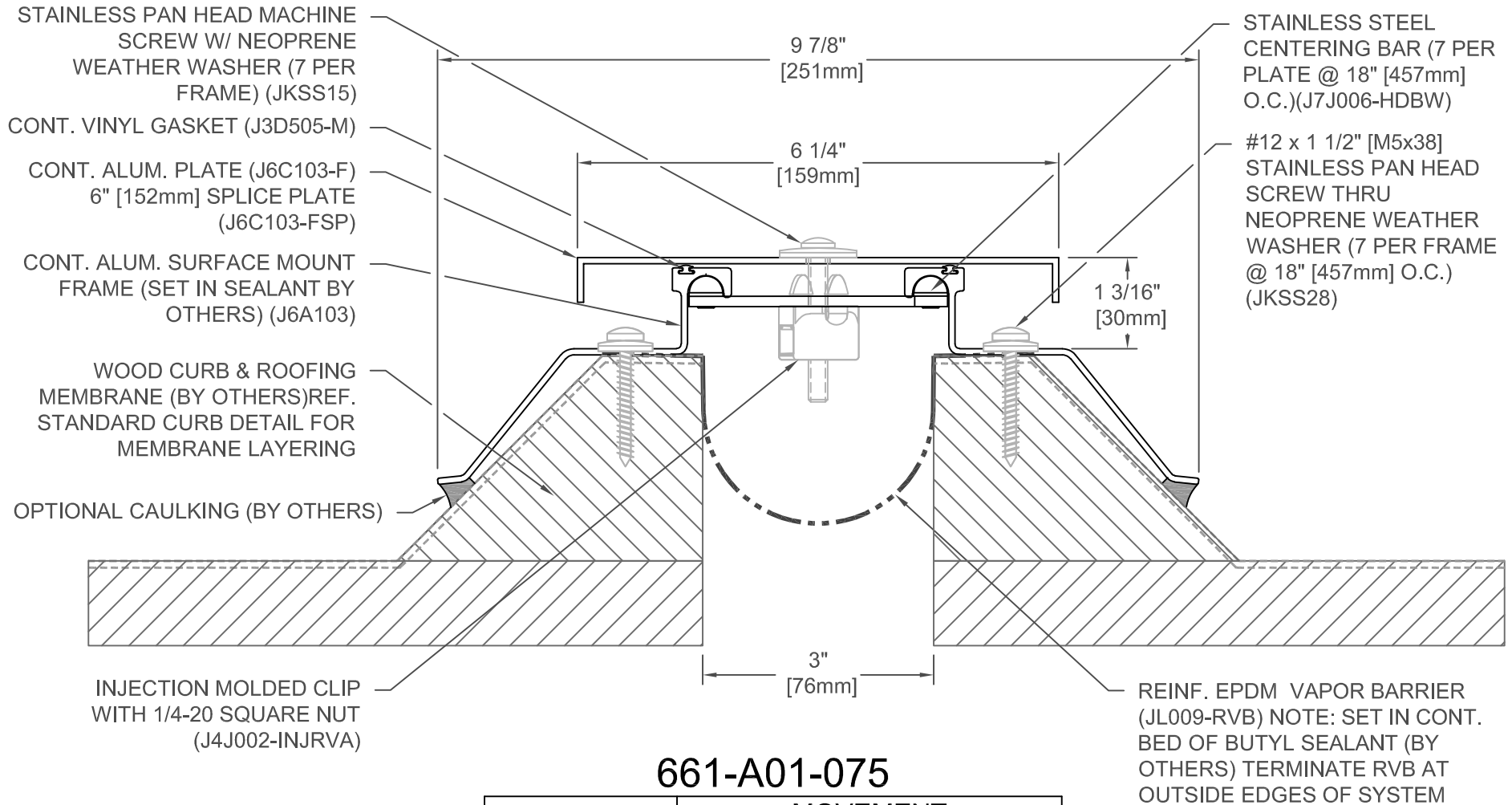
FINISH: MILL
PROJECT:
CUSTOMER:
LOCATION:

APPLICATION-
CURB MOUNTED CENTERING BAR
ROOF/ROOF CONDITION

DATE:	4-13-05
SCALE:	1:2
DOC:	CADJM.009/R7

inpro[®]

For More Information Visit: Inprocorp.com



661-A01-075

JOINT WIDTH		MOVEMENT			
		MINIMUM		MAXIMUM	
US	mm	US	mm	US	mm
3"	76	1-1/2"	38	5-1/2"	140

FINISH: MILL
PROJECT:
CUSTOMER:
LOCATION:

APPLICATION-
CURB MOUNTED CENTERING BAR
ROOF/ROOF CONDITION

DATE:	4-13-05
SCALE:	1:2
DOC:	CADJM.009/R7

inpro

For More Information Visit: Inprocorp.com

STAINLESS PAN HEAD MACHINE
SCREW W/ NEOPRENE
WEATHER WASHER (7 PER
FRAME) (JKSS15)

CONT. VINYL GASKET
(J3D505-M)

CONT. ALUM. PLATE
(J6C104-F) 6" [152mm] SPLICE
PLATE (J6C104-FSP)

CONT. ALUM. SURFACE MOUNT
FRAME (SET IN SEALANT BY
OTHERS) (J6A103)

WOOD CURB & ROOFING
MEMBRANE (BY OTHERS)
REF. STANDARD CURB DETAIL
FOR MEMBRANE LAYERING

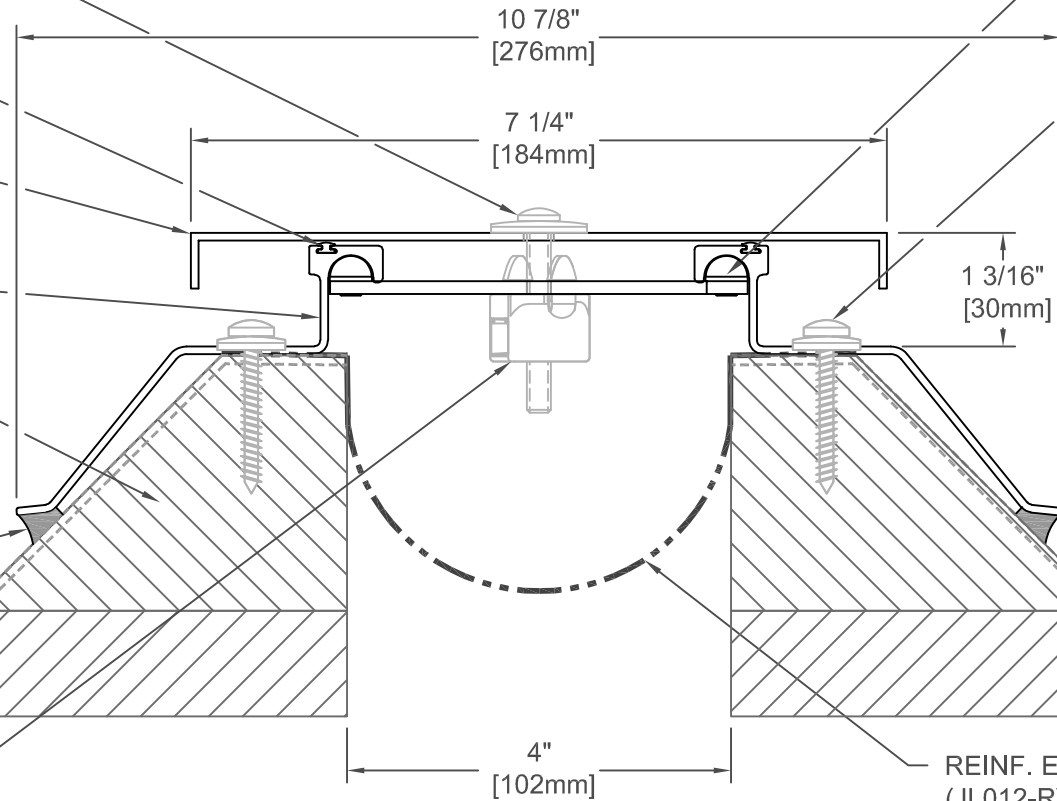
OPTIONAL CAULKING
(BY OTHERS)

INJECTION MOLDED CLIP
WITH 1/4-20 SQUARE NUT
(J4J002-INJRVVA)

STAINLESS STEEL
CENTERING BAR (7 PER
PLATE @ 18" [457mm]
O.C.)(J7J006-HDBW)

#12 x 1 1/2" [M5x38]
STAINLESS PAN HEAD
SCREW THRU
NEOPRENE WEATHER
WASHER (7 PER FRAME
@ 18" [457mm] O.C.)
(JKSS28)

REINF. EPDM VAPOR BARRIER
(JL012-RVB) NOTE: SET IN CONT.
BED OF BUTYL SEALANT (BY
OTHERS) TERMINATE RVB AT
OUTSIDE EDGES OF SYSTEM



661-A01-100

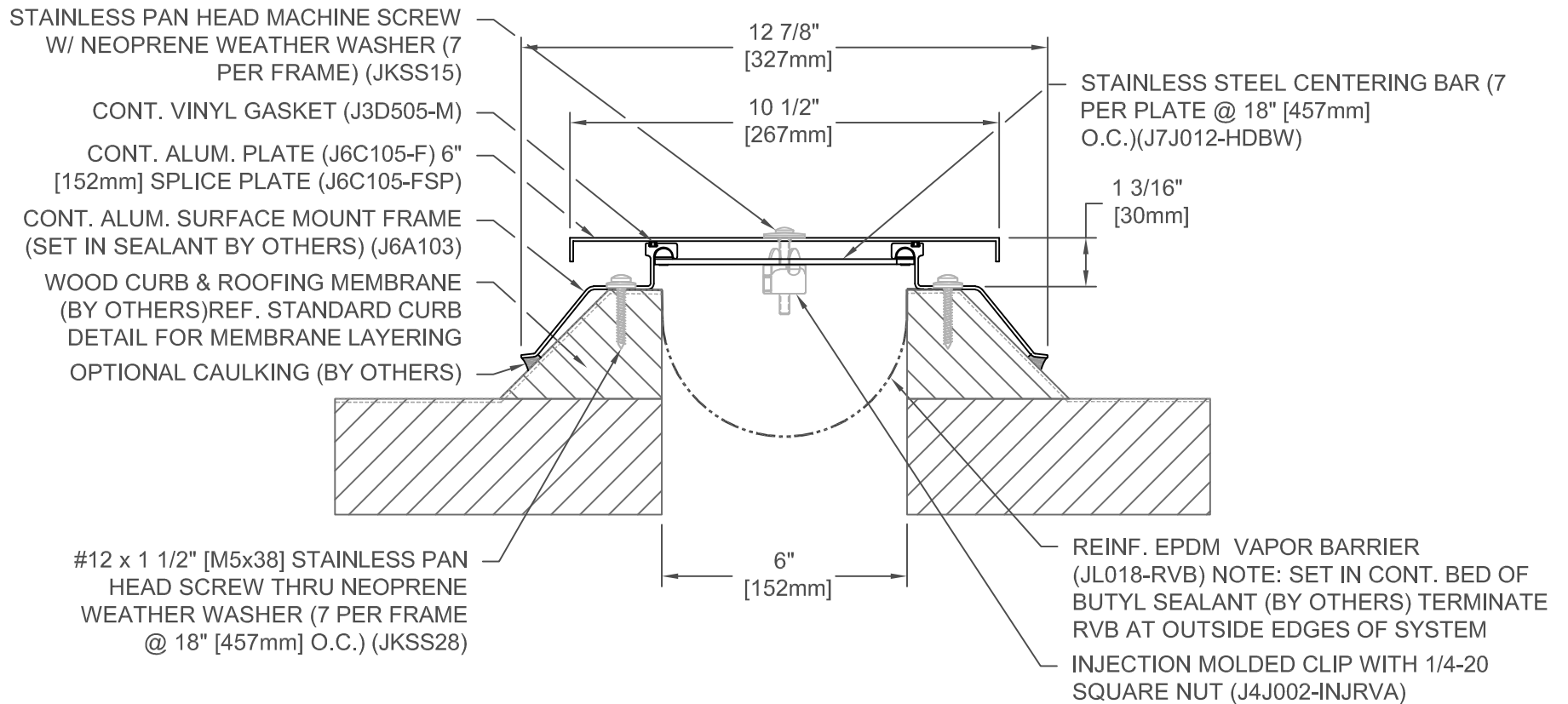
JOINT WIDTH		MOVEMENT			
		MINIMUM		MAXIMUM	
US	mm	US	mm	US	mm
4"	102	1-1/2"	38	6-1/2"	165

FINISH: MILL
PROJECT:
CUSTOMER:
LOCATION:

APPLICATION-
CURB MOUNTED CENTERING BAR
ROOF/ROOF CONDITION

DATE: 4-13-05
SCALE: 1:2
DOC: CADJM.009/R7





661-A01-150

JOINT WIDTH		MOVEMENT			
		MINIMUM		MAXIMUM	
US	mm	US	mm	US	mm
6"	152	1-1/2"	38	10"	254

FINISH: MILL
PROJECT:
CUSTOMER:
LOCATION:

APPLICATION-
CURB MOUNTED CENTERING BAR
ROOF/ROOF CONDITION

DATE:	4-13-05
SCALE:	1:4
DOC:	CADJM.009/R7

inpro[®]

For More Information Visit: Inprocorp.com

STAINLESS PAN HEAD MACHINE SCREW
W/ NEOPRENE WEATHER WASHER (7
PER FRAME) (JKSS15)

CONT. VINYL GASKET (J3D505-M)

CONT. ALUM. PLATE (J6C106-F) 6"
[152mm] SPLICE PLATE (J6C106-FSP)

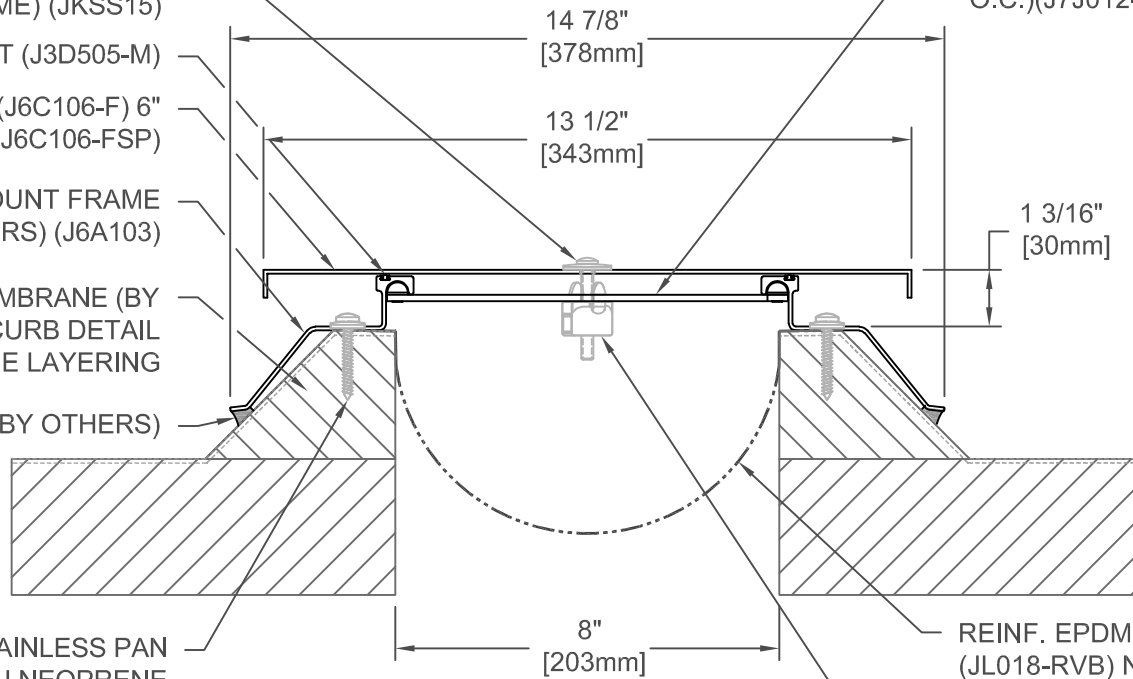
CONT. ALUM. SURFACE MOUNT FRAME
(SET IN SEALANT BY OTHERS) (J6A103)

WOOD CURB & ROOFING MEMBRANE (BY
OTHERS) REF. STANDARD CURB DETAIL
FOR MEMBRANE LAYERING

OPTIONAL CAULKING (BY OTHERS)

#12 x 1 1/2" [M5x38] STAINLESS PAN
HEAD SCREW THRU NEOPRENE
WEATHER WASHER (7 PER FRAME
@ 18" [457mm] O.C.) (JKSS28)

STAINLESS STEEL CENTERING BAR (7
PER PLATE @ 18" [457mm]
O.C.) (J7J012-HDBW)



REINF. EPDM VAPOR BARRIER
(JL018-RVB) NOTE: SET IN
CONT. BED OF BUTYL SEALANT
(BY OTHERS) TERMINATE RVB
AT OUTSIDE EDGES OF
SYSTEM
INJECTION MOLDED CLIP WITH 1/4-20
SQUARE NUT (J4J002-INJVA)

661-A01-200

JOINT WIDTH		MOVEMENT			
		MINIMUM		MAXIMUM	
US	mm	US	mm	US	mm
8"	203	1-1/2"	38	12-1/2"	318

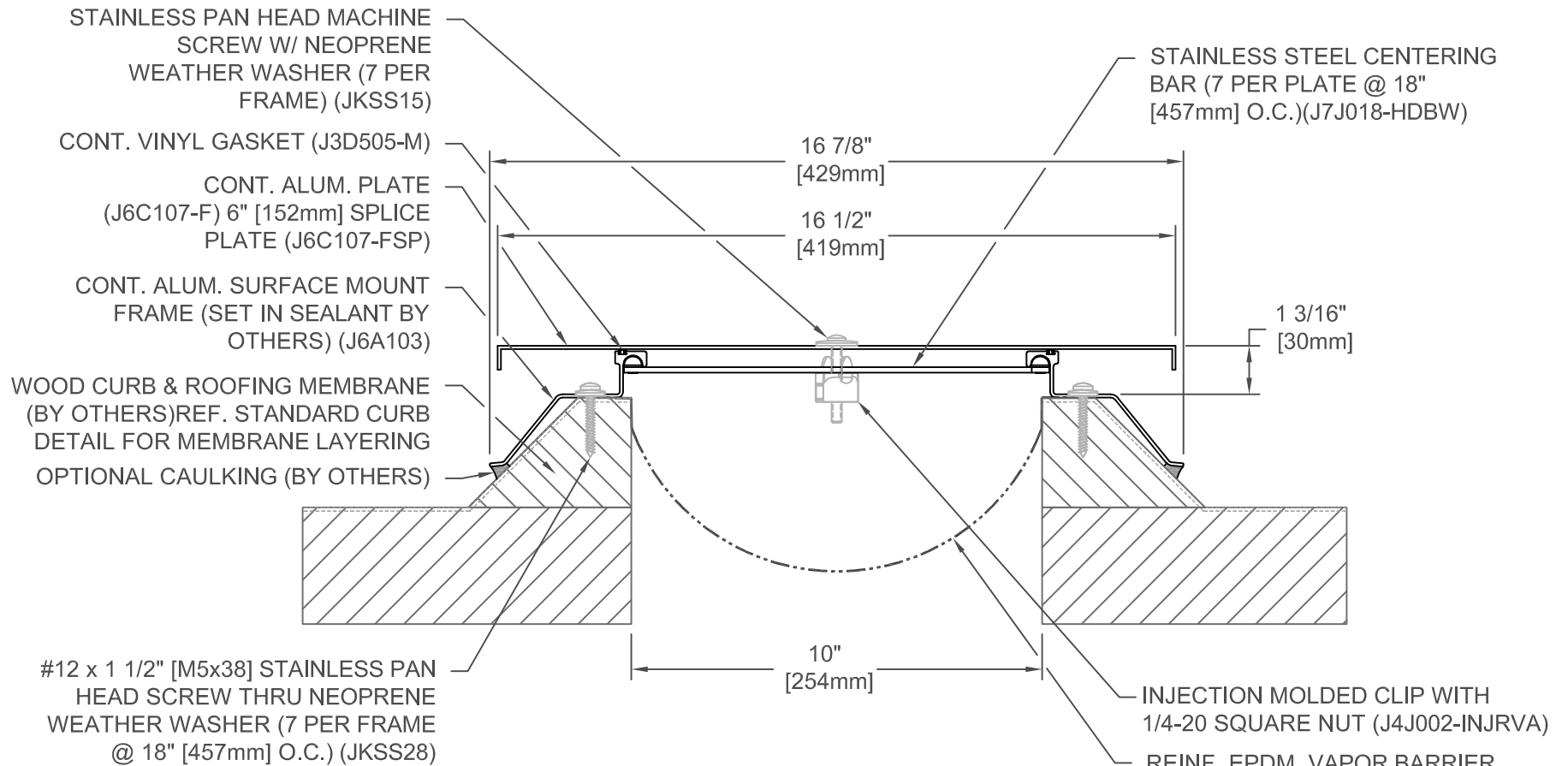
FINISH: MILL
PROJECT:
CUSTOMER:
LOCATION:

APPLICATION-
CURB MOUNTED CENTERING BAR
ROOF/ROOF CONDITION

DATE:	4-13-05
SCALE:	1:4
DOC:	CADJM.009/R7



For More Information Visit: Inprocorp.com



661-A01-250

JOINT WIDTH		MOVEMENT			
		MINIMUM		MAXIMUM	
US	mm	US	mm	US	mm
10"	254	1-1/2"	38	15-1/2"	394

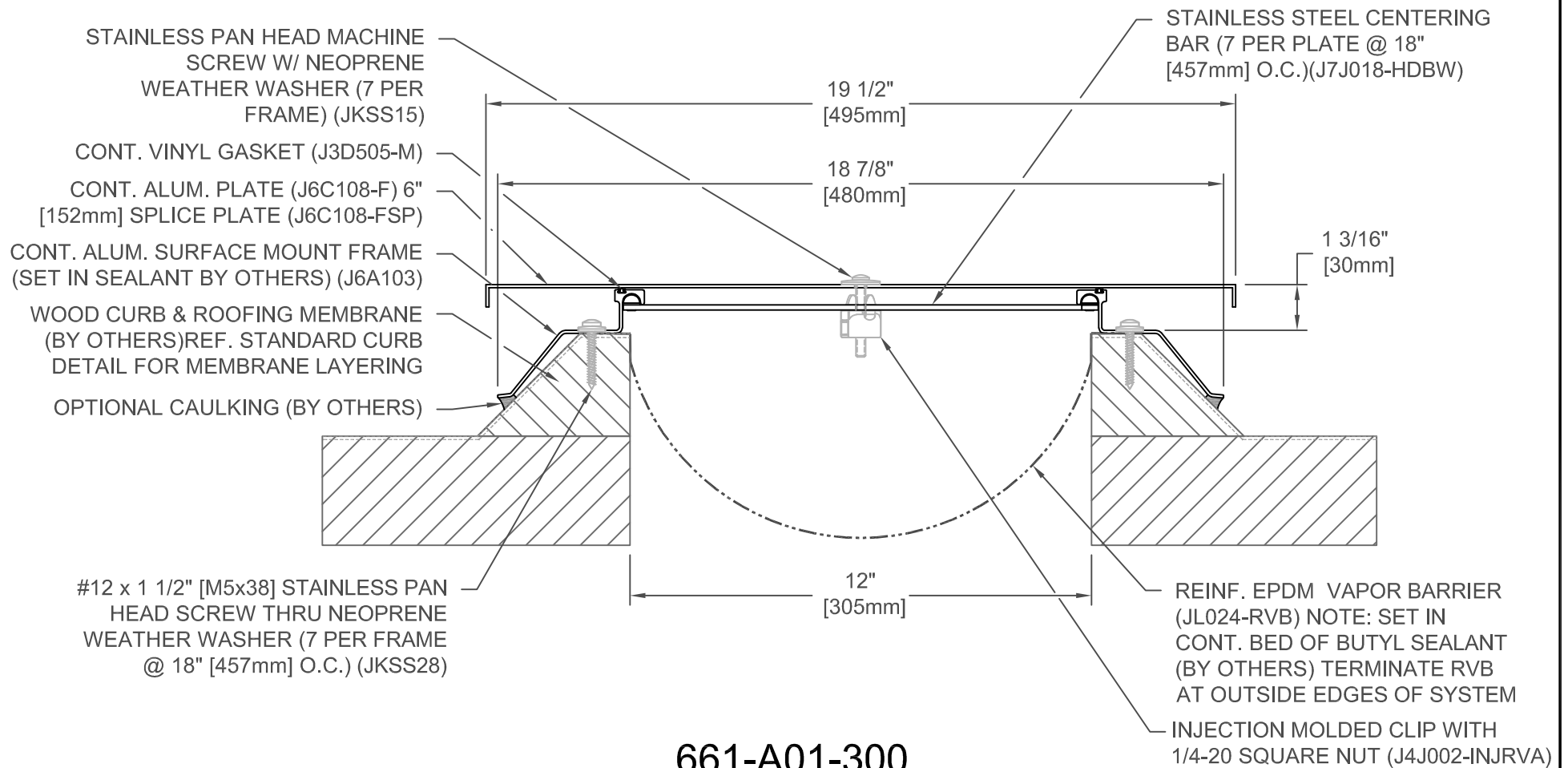
FINISH: MILL
PROJECT:
CUSTOMER:
LOCATION:

APPLICATION-
CURB MOUNTED CENTERING BAR
ROOF/ROOF CONDITION

DATE:	12-7-16
SCALE:	1:4
DOC:	CADJM.009/R7

inpro

For More Information Visit: Inprocorp.com



661-A01-300

JOINT WIDTH		MOVEMENT			
		MINIMUM		MAXIMUM	
US	mm	US	mm	US	mm
12"	305	1-1/2"	38	18-1/2"	470

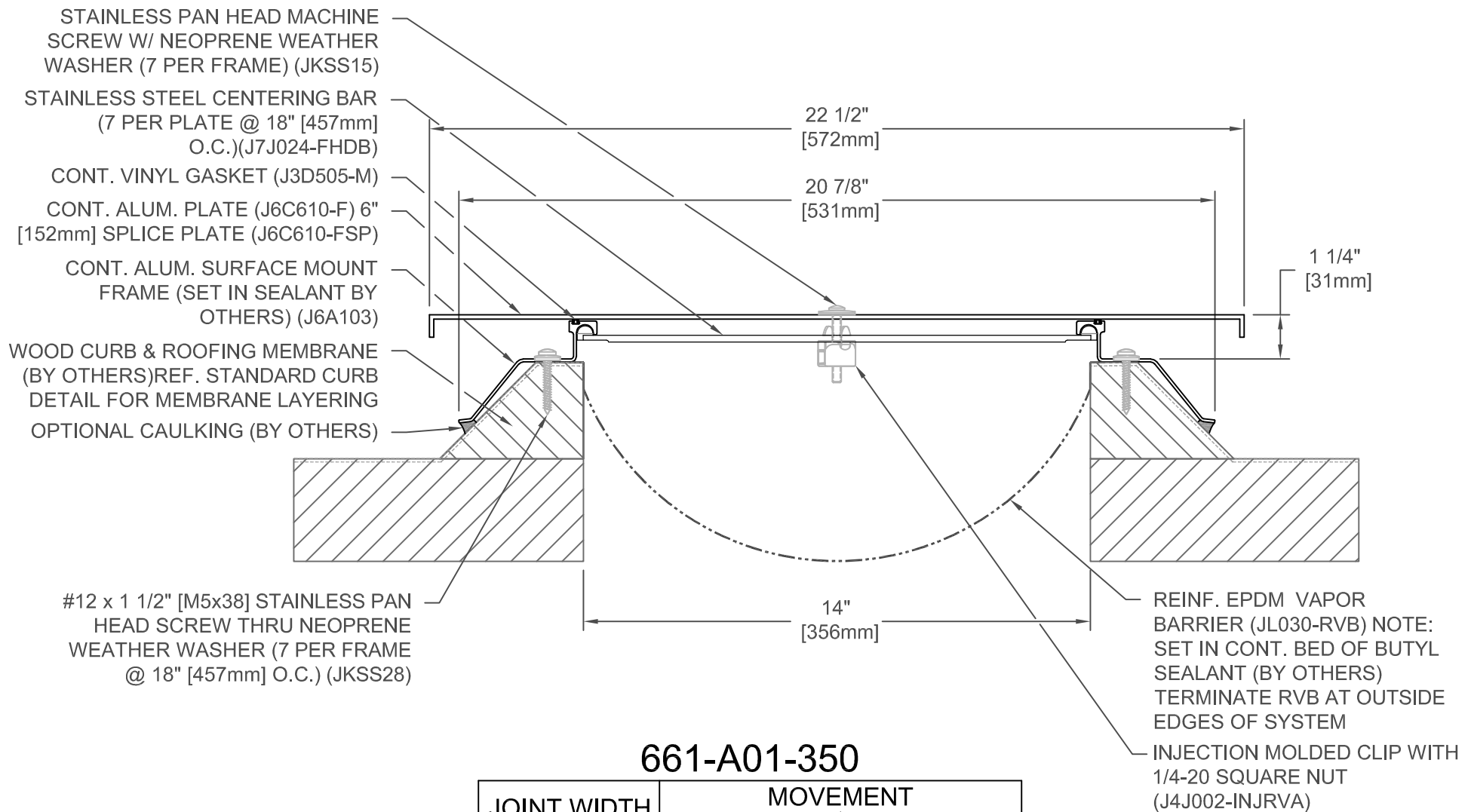
FINISH: MILL
PROJECT:
CUSTOMER:
LOCATION:

APPLICATION-
CURB MOUNTED CENTERING BAR
ROOF/ROOF CONDITION

DATE:	4-13-05
SCALE:	1:4
DOC:	CADJM.009/R7

inpro[®]

For More Information Visit: Inprocorp.com



JOINT WIDTH		MOVEMENT			
		MINIMUM		MAXIMUM	
US	mm	US	mm	US	mm
14"	356	1-1/2"	38	21-1/2"	546

FINISH: MILL
PROJECT:
CUSTOMER:
LOCATION:

APPLICATION-
CURB MOUNTED CENTERING BAR
ROOF/ROOF CONDITION

DATE:	12-7-16
SCALE:	1:4
DOC:	CADJM.009/R7

inpro.

For More Information Visit: Inprocorp.com

STAINLESS PAN HEAD MACHINE
SCREW W/ NEOPRENE WEATHER
WASHER (7 PER FRAME) (JKSS15)

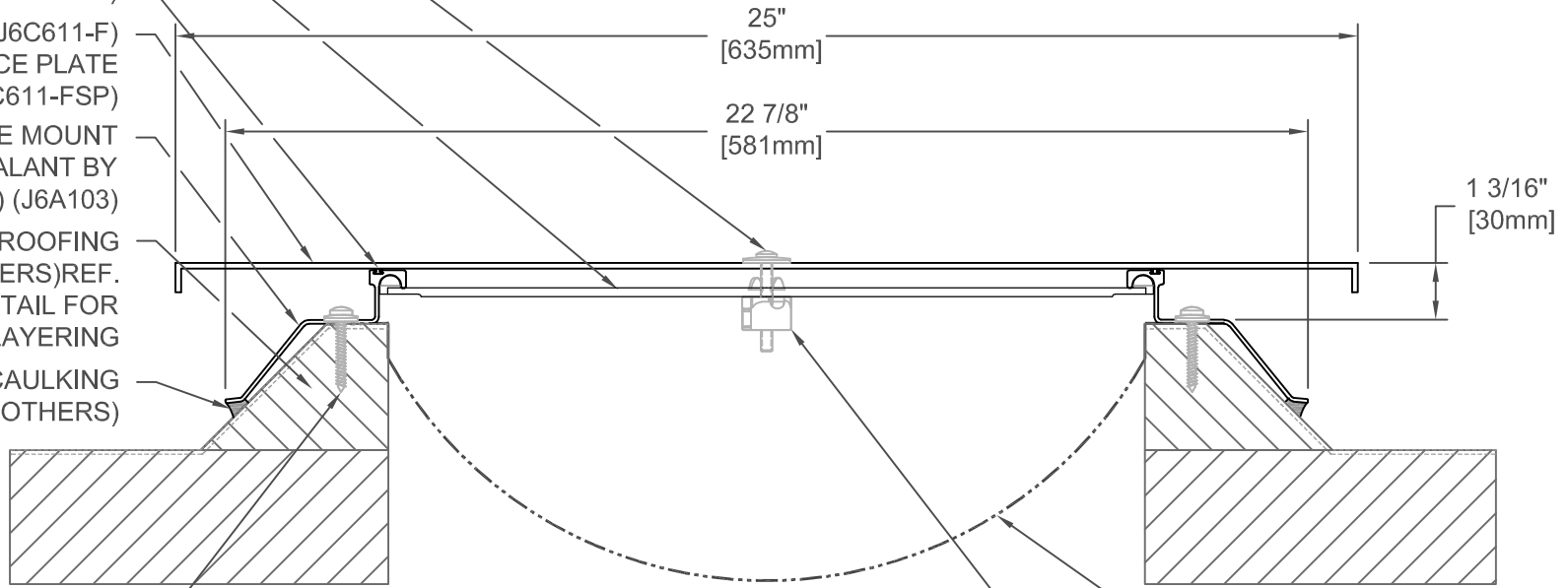
STAINLESS STEEL CENTERING
BAR (7 PER PLATE @ 18" [457mm]
O.C.)(J7J024-FHDB)
CONT. VINYL GASKET (J3D505-M)

CONT. ALUM. PLATE (J6C611-F)
6" [152mm] SPLICE PLATE
(J6C611-FSP)

CONT. ALUM. SURFACE MOUNT
FRAME (SET IN SEALANT BY
OTHERS) (J6A103)

WOOD CURB & ROOFING
MEMBRANE (BY OTHERS)REF.
STANDARD CURB DETAIL FOR
MEMBRANE LAYERING

OPTIONAL CAULKING
(BY OTHERS)



#12 x 1 1/2" [M5x38]
STAINLESS PAN HEAD
SCREW THRU NEOPRENE
WEATHER WASHER (7 PER
FRAME @ 18" [457mm] O.C.)
(JKSS28)

REINF. EPDM VAPOR
BARRIER (JL036-RVB) NOTE:
SET IN CONT. BED OF BUTYL
SEALANT (BY OTHERS)
TERMINATE RVB AT OUTSIDE
EDGES OF SYSTEM

INJECTION MOLDED CLIP WITH
1/4-20 SQUARE NUT
(J4J002-INJRVA)

661-A01-400

JOINT WIDTH		MOVEMENT			
		MINIMUM		MAXIMUM	
US	mm	US	mm	US	mm
16"	406	1-1/2"	38	24"	610

FINISH: MILL
PROJECT:
CUSTOMER:
LOCATION:

APPLICATION-
CURB MOUNTED CENTERING BAR
ROOF/ROOF CONDITION

DATE:	12-7-16
SCALE:	1:4
DOC:	CADJM.009/R7



For More Information Visit: Inprocorp.com