

650C-A09-150

SPECIFY PANEL COLOR:		
CLEAR ANO. (MNC)	ALUM. GRAY (AGT)	
BONE WHITE (BNT)	DEEP GRAY (BGY)	
OYSTER (CRT)	CHARCOAL (CNC)	
BRONZE (JBR)	BLACK (BLK)	

JOINT WIDTH		MOVEMENT			
		MINIMUM		MAXIMUM	
US	mm	US	mm	US	mm
6"	152	2 3/4"	70	12"	305

FINISH: CLEAR ANODIZED - ALUM

PROJECT:

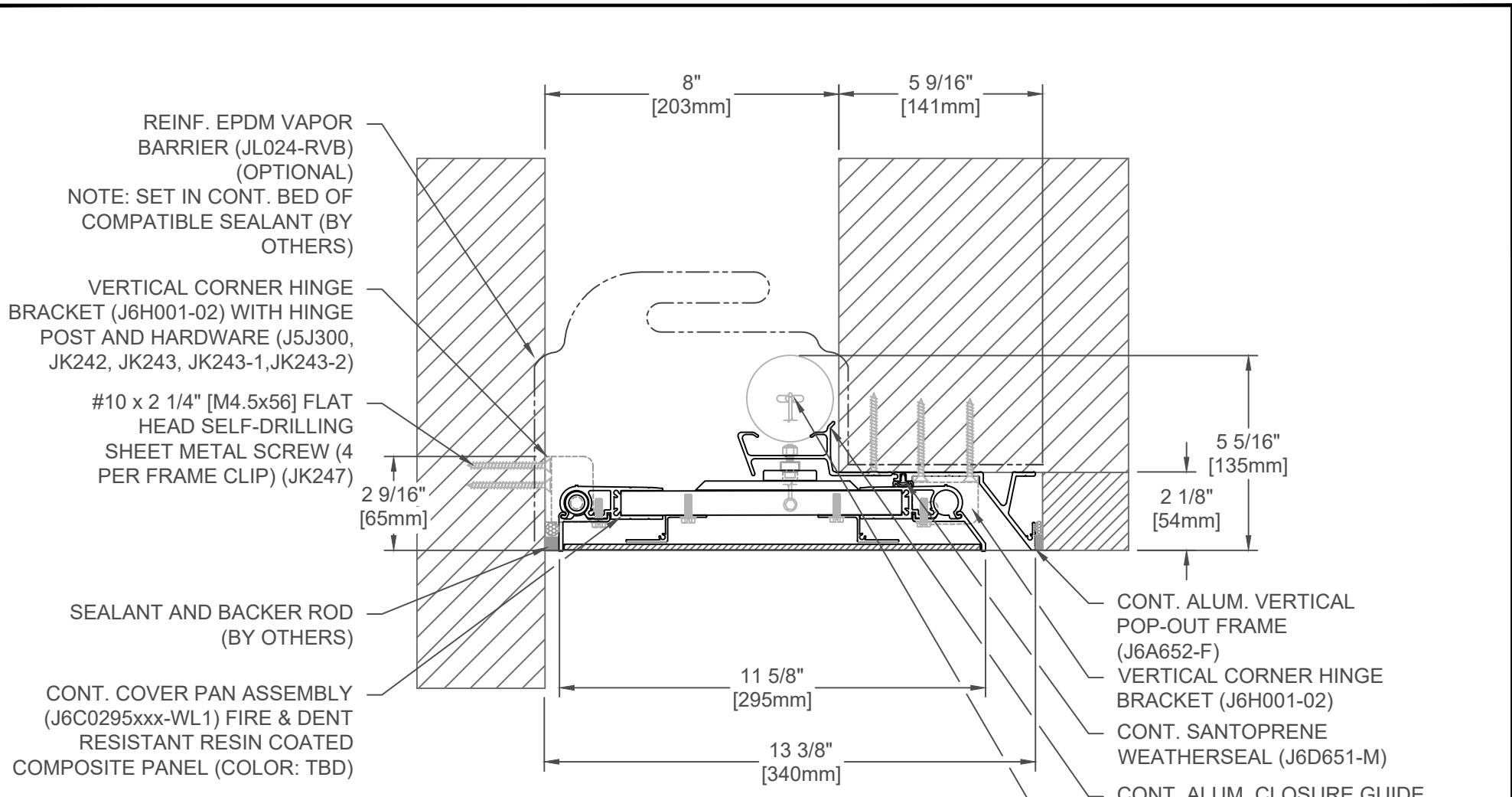
CUSTOMER:

LOCATION:

APPLICATION - EXTERIOR
WALL/CORNER CONCEALED PAN EXPANSION JOINT SYSTEM

DATE: 9/4/18
SCALE: 1:4
DOC: CADJM.249/R2





650C-A09-200

SPECIFY PANEL COLOR:		
CLEAR ANO. (MNC)		ALUM. GRAY (AGT)
BONE WHITE (BNT)		DEEP GRAY (BGY)
OYSTER (CRT)		CHARCOAL (CNC)
BRONZE (JBR)		BLACK (BLK)

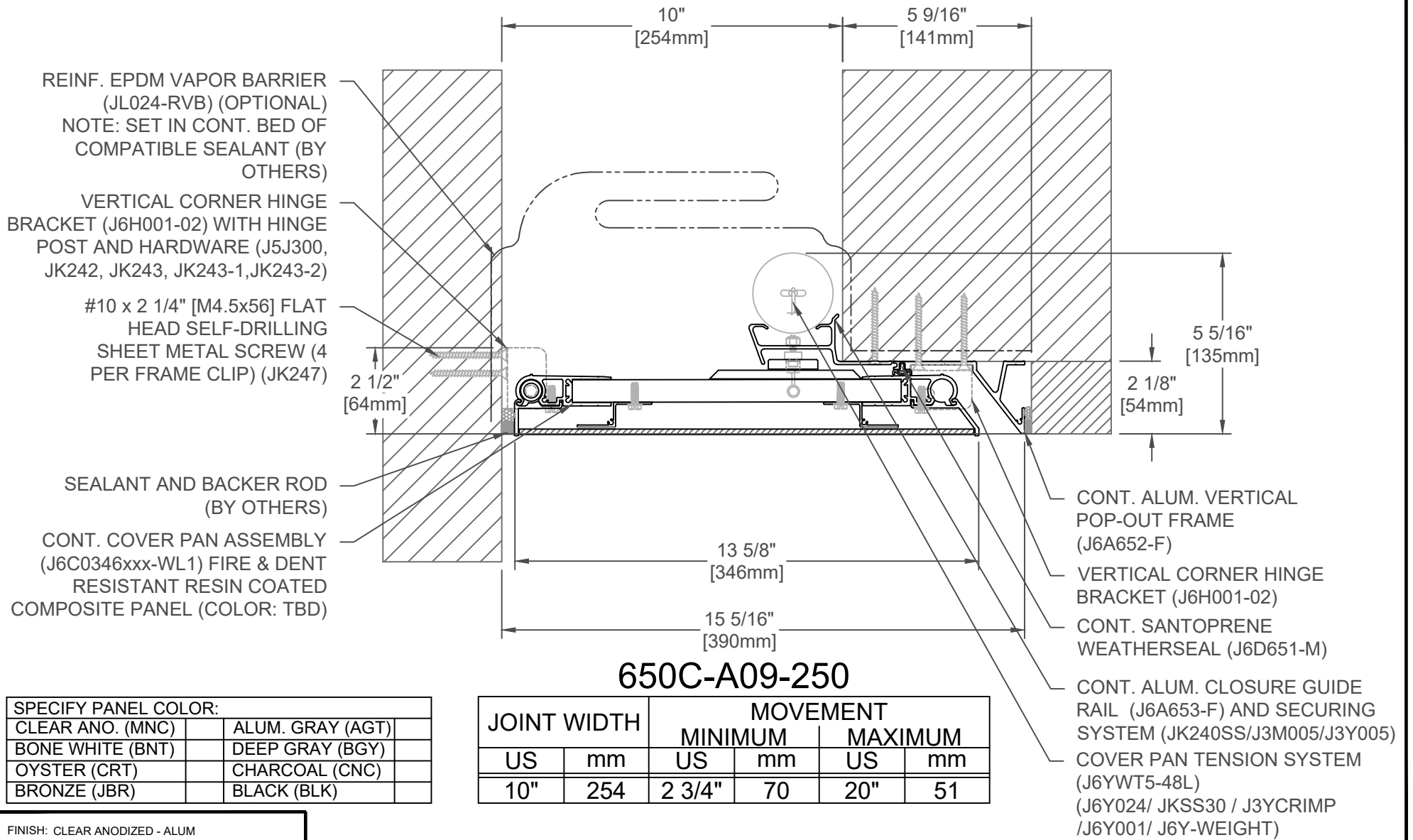
JOINT WIDTH		MOVEMENT			
		MINIMUM		MAXIMUM	
US	mm	US	mm	US	mm
8"	203	2 3/4"	70	16"	406

FINISH: CLEAR ANODIZED - ALUM
PROJECT:
CUSTOMER:
LOCATION:

APPLICATION - EXTERIOR
WALL/CORNER CONCEALED PAN EXPANSION JOINT SYSTEM

DATE:	9/4/18
SCALE:	1:4
DOC:	CADJM.249/R1

For More Information Visit: Inprocorp.com



SPECIFY PANEL COLOR:		
CLEAR ANO. (MNC)		ALUM. GRAY (AGT)
BONE WHITE (BNT)		DEEP GRAY (BGY)
OYSTER (CRT)		CHARCOAL (CNC)
BRONZE (JBR)		BLACK (BLK)

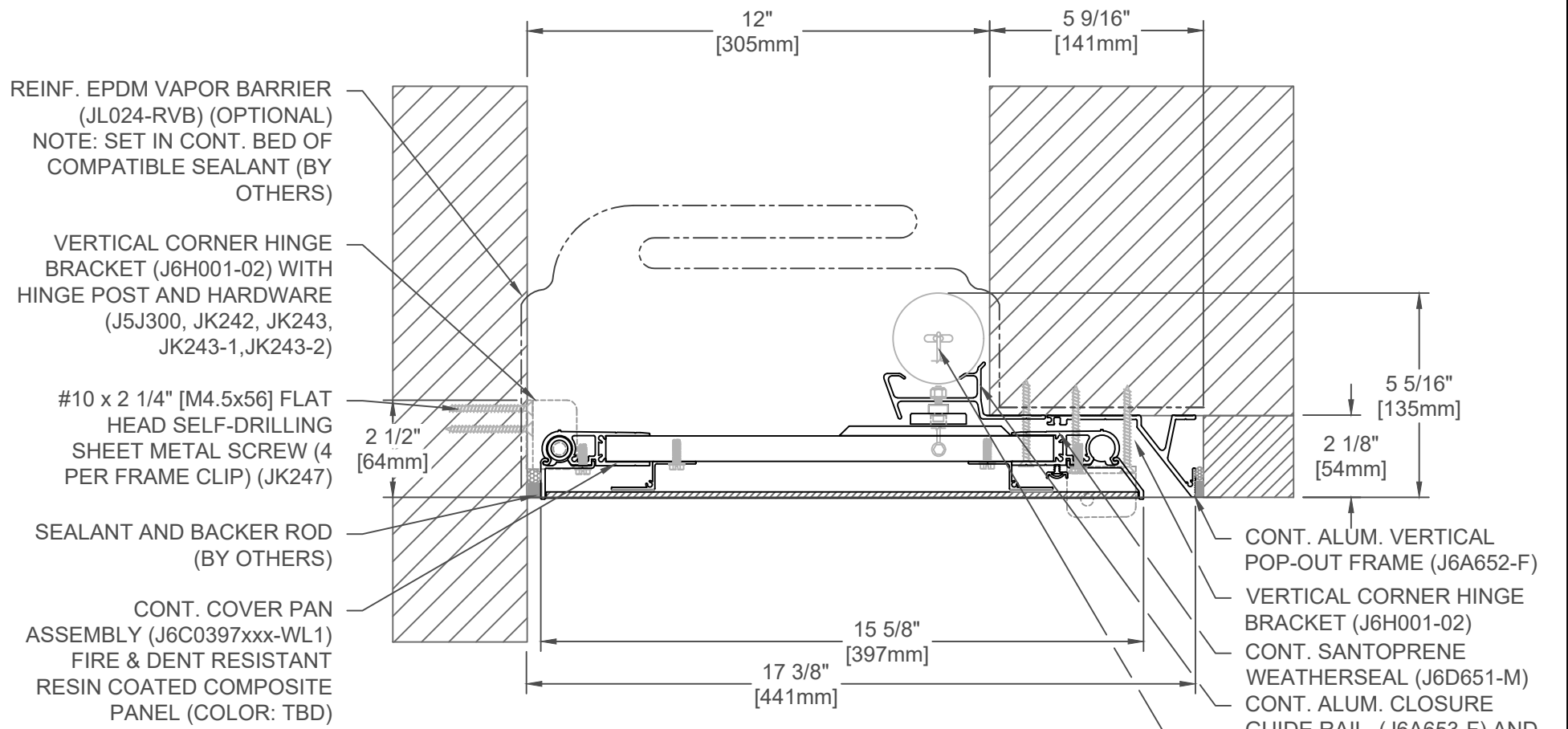
JOINT WIDTH		MOVEMENT			
		MINIMUM		MAXIMUM	
US	mm	US	mm	US	mm
10"	254	2 3/4"	70	20"	51

FINISH: CLEAR ANODIZED - ALUM
PROJECT:
CUSTOMER:
LOCATION:

APPLICATION - EXTERIOR
WALL/CORNER CONCEALED PAN EXPANSION JOINT SYSTEM

DATE: 9/4/18
SCALE: 1:4
DOC: CADJM.249/R2





650C-A09-300

SPECIFY PANEL COLOR:	
CLEAR ANO. (MNC)	ALUM. GRAY (AGT)
BONE WHITE (BNT)	DEEP GRAY (BGY)
OYSTER (CRT)	CHARCOAL (CNC)
BRONZE (JBR)	BLACK (BLK)

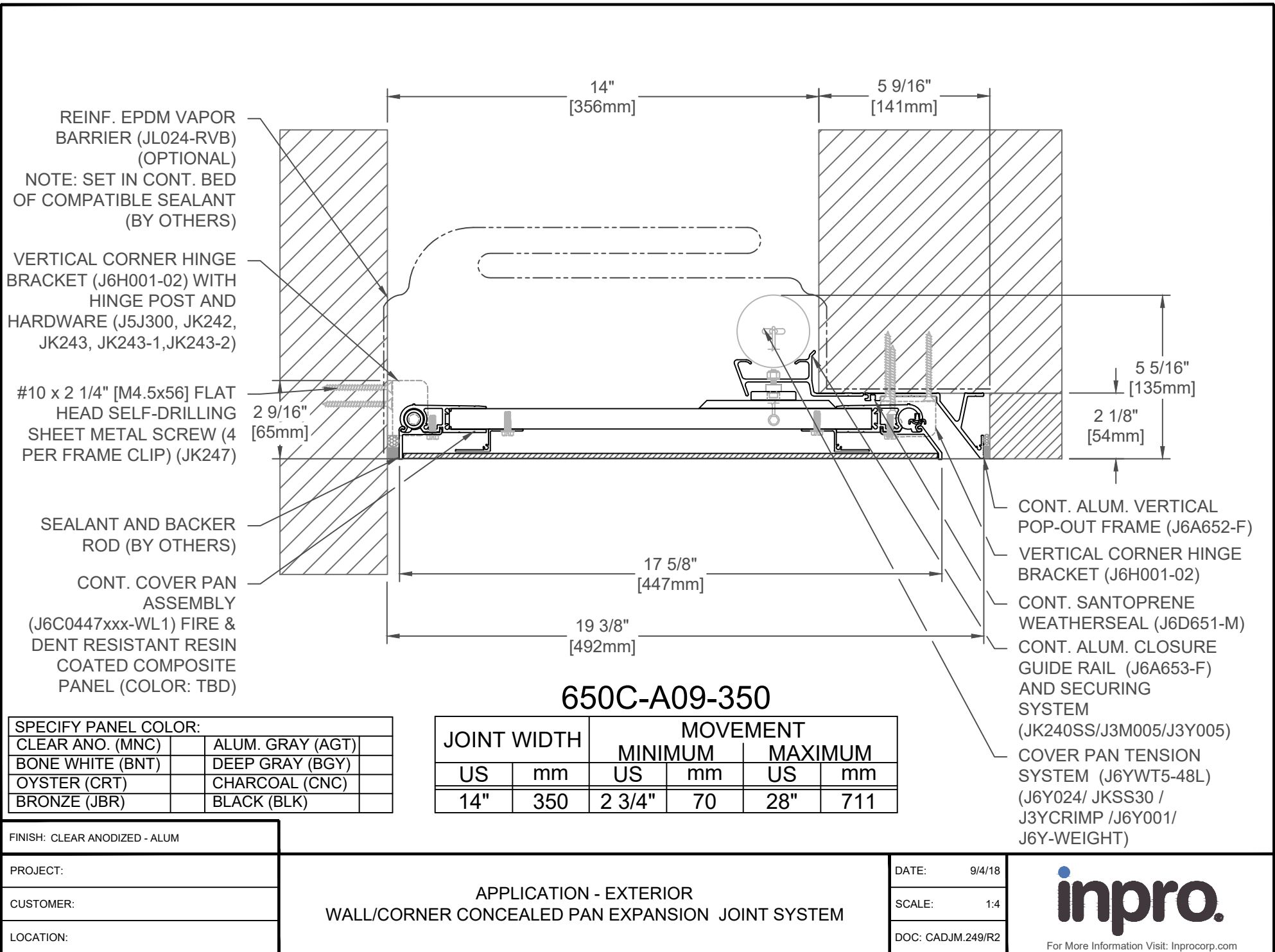
JOINT WIDTH		MOVEMENT			
		MINIMUM		MAXIMUM	
US	mm	US	mm	US	mm
12"	305	2 3/4"	70	24"	610

FINISH: CLEAR ANODIZED - ALUM
PROJECT:
CUSTOMER:
LOCATION:

APPLICATION - EXTERIOR
WALL/CORNER CONCEALED PAN EXPANSION JOINT SYSTEM

DATE:	9/4/18
SCALE:	1:4
DOC:	CADJM.249/R2





650C-A09-350

SPECIFY PANEL COLOR:		
CLEAR ANO. (MNC)		ALUM. GRAY (AGT)
BONE WHITE (BNT)		DEEP GRAY (BGY)
OYSTER (CRT)		CHARCOAL (CNC)
BRONZE (JBR)		BLACK (BLK)

JOINT WIDTH		MOVEMENT			
		MINIMUM		MAXIMUM	
US	mm	US	mm	US	mm
14"	350	2 3/4"	70	28"	711

FINISH: CLEAR ANODIZED - ALUM
PROJECT:
CUSTOMER:
LOCATION:

APPLICATION - EXTERIOR
WALL/CORNER CONCEALED PAN EXPANSION JOINT SYSTEM

DATE:	9/4/18
SCALE:	1:4
DOC:	CADJM.249/R2


 For More Information Visit: Inprocorp.com

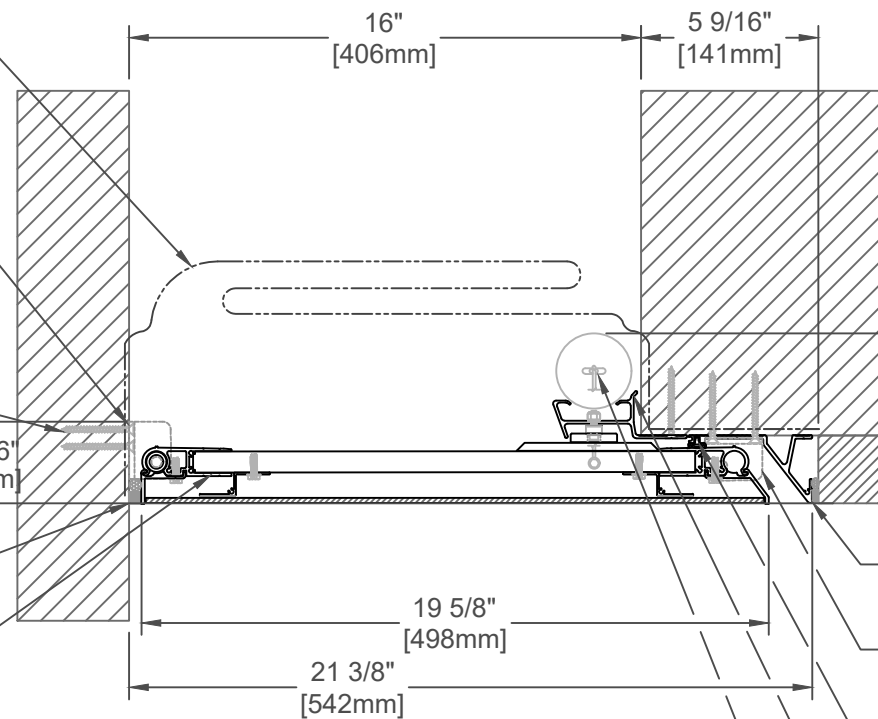
REINF. EPDM VAPOR BARRIER (JL024-RVB) (OPTIONAL)
NOTE: SET IN CONT. BED OF COMPATIBLE SEALANT (BY OTHERS)

VERTICAL CORNER HINGE BRACKET (J6H001-02) WITH HINGE POST AND HARDWARE (J5J300, JK242, JK243, JK243-1, JK243-2)

#10 x 2 1/4" [M4.5x56] FLAT HEAD SELF-DRILLING SHEET METAL SCREW (4 PER FRAME CLIP) (JK247)

SEALANT AND BACKER ROD (BY OTHERS)

CONT. COVER PAN ASSEMBLY (J6C0498xxx-WL1) FIRE & DENT RESISTANT RESIN COATED COMPOSITE PANEL (COLOR: TBD)



5 5/16" [135mm]
2 1/8" [54mm]

CONT. ALUM. VERTICAL POP-OUT FRAME (J6A652-F)
VERTICAL CORNER HINGE BRACKET (J6H001-02)
CONT. SANTOPRENE WEATHERSEAL (J6D651-M)
CONT. ALUM. CLOSURE GUIDE RAIL (J6A653-F) AND SECURING SYSTEM (JK240SS/J3M005/J3Y005)

COVER PAN TENSION SYSTEM (J6YWT5-48L)(J6Y024/ JKSS30 / J3YCRIMP /J6Y001/ J6Y-WEIGHT)

650C-A09-400

SPECIFY PANEL COLOR:		
CLEAR ANO. (MNC)	ALUM. GRAY (AGT)	
BONE WHITE (BNT)	DEEP GRAY (BGY)	
OYSTER (CRT)	CHARCOAL (CNC)	
BRONZE (JBR)	BLACK (BLK)	

JOINT WIDTH		MOVEMENT			
		MINIMUM		MAXIMUM	
US	mm	US	mm	US	mm
16"	406	2 3/4"	70	32"	813

FINISH: CLEAR ANODIZED - ALUM

PROJECT:

CUSTOMER:

LOCATION:

APPLICATION - EXTERIOR
WALL/CORNER CONCEALED PAN EXPANSION JOINT SYSTEM

DATE: 9/4/18

SCALE: 1:6

DOC: CADJM.249/R1

inpro.

For More Information Visit: Inprocorp.com

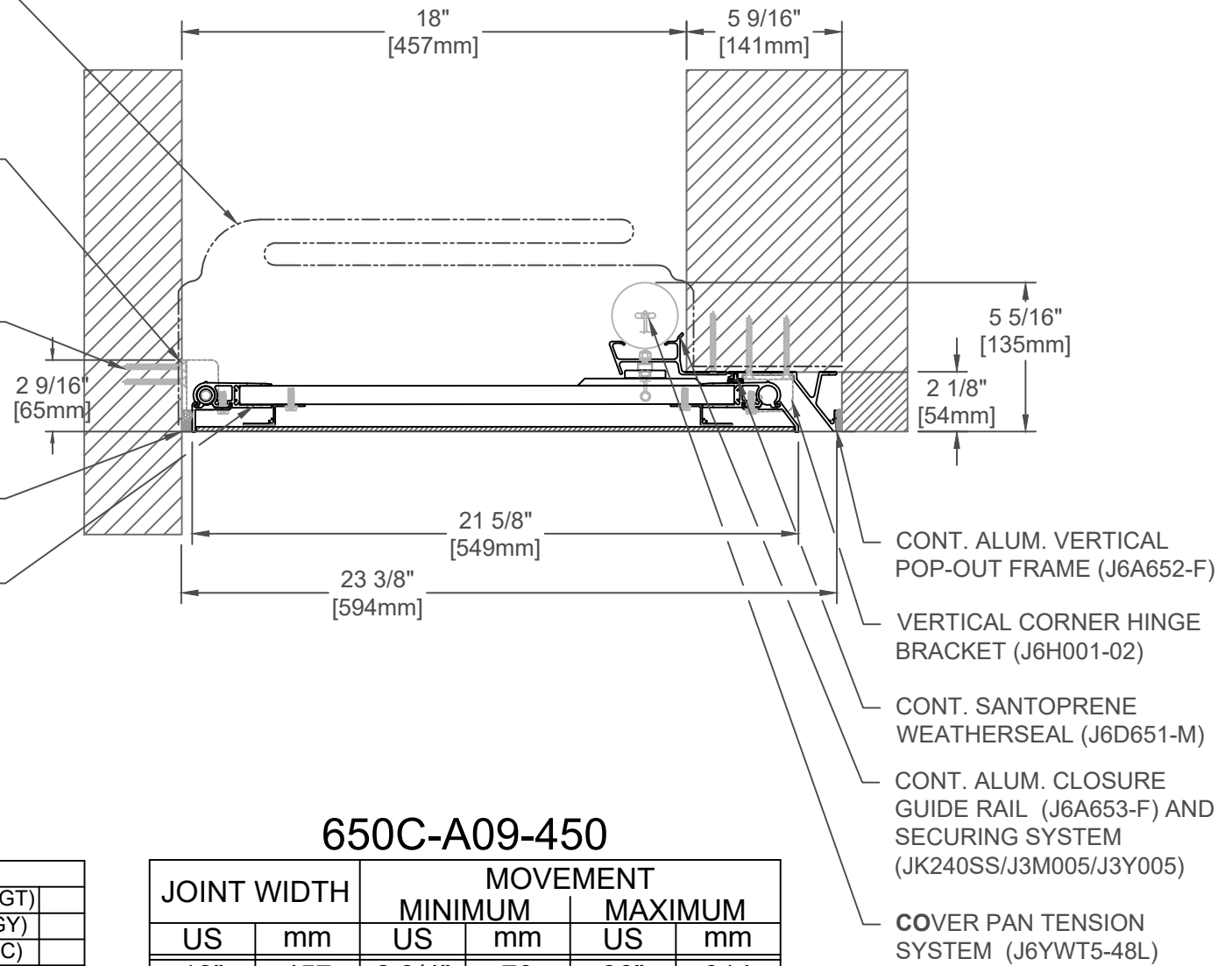
REINF. EPDM VAPOR BARRIER
(JL024-RVB) (OPTIONAL)
NOTE: SET IN CONT. BED OF
COMPATIBLE SEALANT (BY
OTHERS)

VERTICAL CORNER HINGE
BRACKET (J6H001-02) WITH
HINGE POST AND HARDWARE
(J5J300, JK242, JK243,
JK243-1, JK243-2)

#10 x 2 1/4" [M4.5x56] FLAT
HEAD SELF-DRILLING SHEET
METAL SCREW (4 PER FRAME
CLIP) (JK247)

SEALANT AND BACKER ROD
(BY OTHERS)

CONT. COVER PAN
ASSEMBLY (J6C0549xxx-WL1)
FIRE & DENT RESISTANT
RESIN COATED COMPOSITE
PANEL (COLOR: TBD)



650C-A09-450

SPECIFY PANEL COLOR:		
CLEAR ANO. (MNC)	ALUM. GRAY (AGT)	
BONE WHITE (BNT)	DEEP GRAY (BGY)	
OYSTER (CRT)	CHARCOAL (CNC)	
BRONZE (JBR)	BLACK (BLK)	

JOINT WIDTH		MOVEMENT			
		MINIMUM		MAXIMUM	
US	mm	US	mm	US	mm
18"	457	2 3/4"	70	36"	914

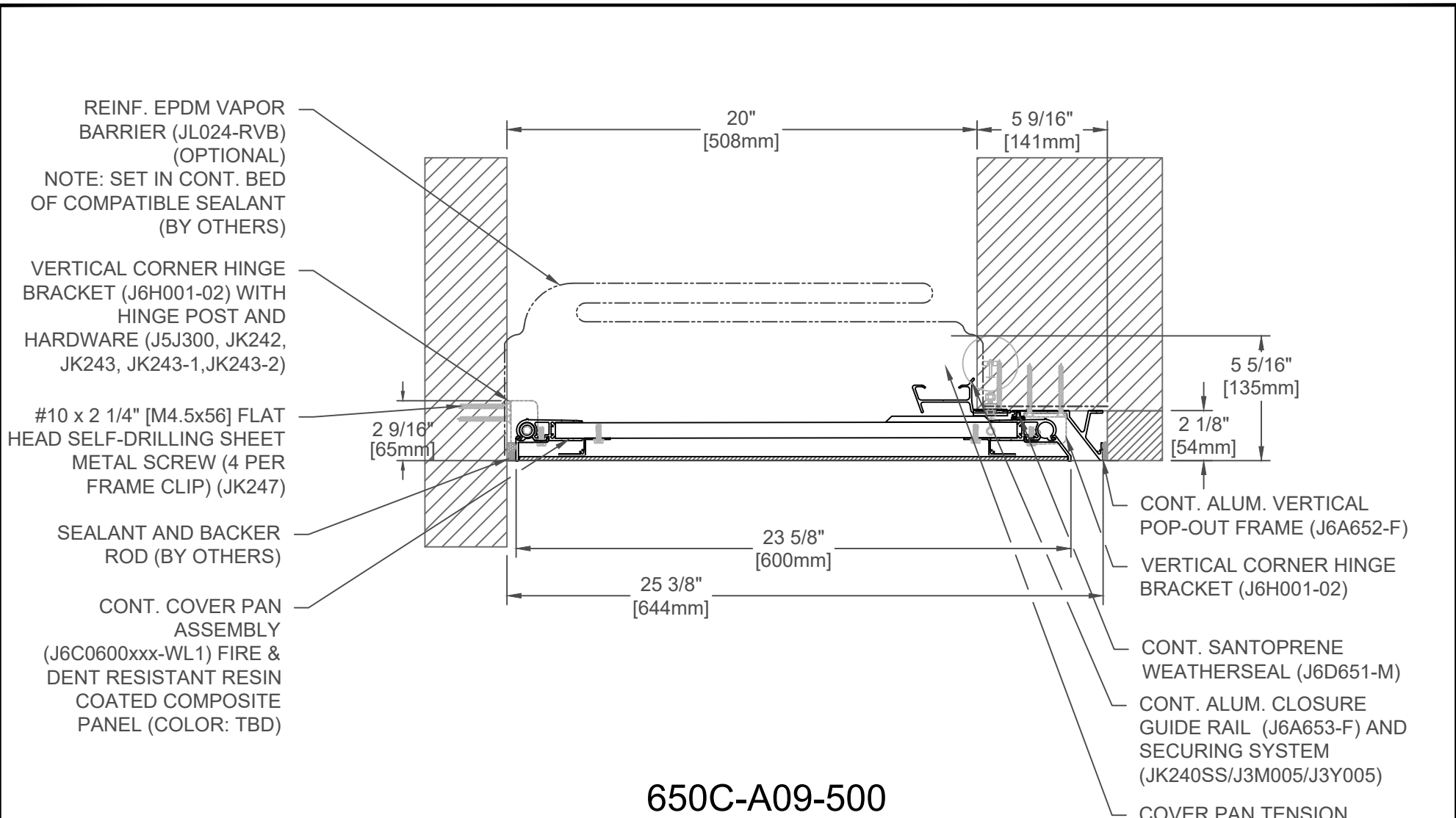
FINISH: CLEAR ANODIZED - ALUM
PROJECT:
CUSTOMER:
LOCATION:

APPLICATION - EXTERIOR
WALL/CORNER CONCEALED PAN EXPANSION JOINT SYSTEM

DATE:	9/4/18
SCALE:	1:6
DOC:	CADJM.249/R1



For More Information Visit: Inprocorp.com



650C-A09-500

SPECIFY PANEL COLOR:		
CLEAR ANO. (MNC)		ALUM. GRAY (AGT)
BONE WHITE (BNT)		DEEP GRAY (BGY)
OYSTER (CRT)		CHARCOAL (CNC)
BRONZE (JBR)		BLACK (BLK)

JOINT WIDTH		MOVEMENT			
		MINIMUM		MAXIMUM	
US	mm	US	mm	US	mm
20"	508	2 3/4"	70	40"	1016

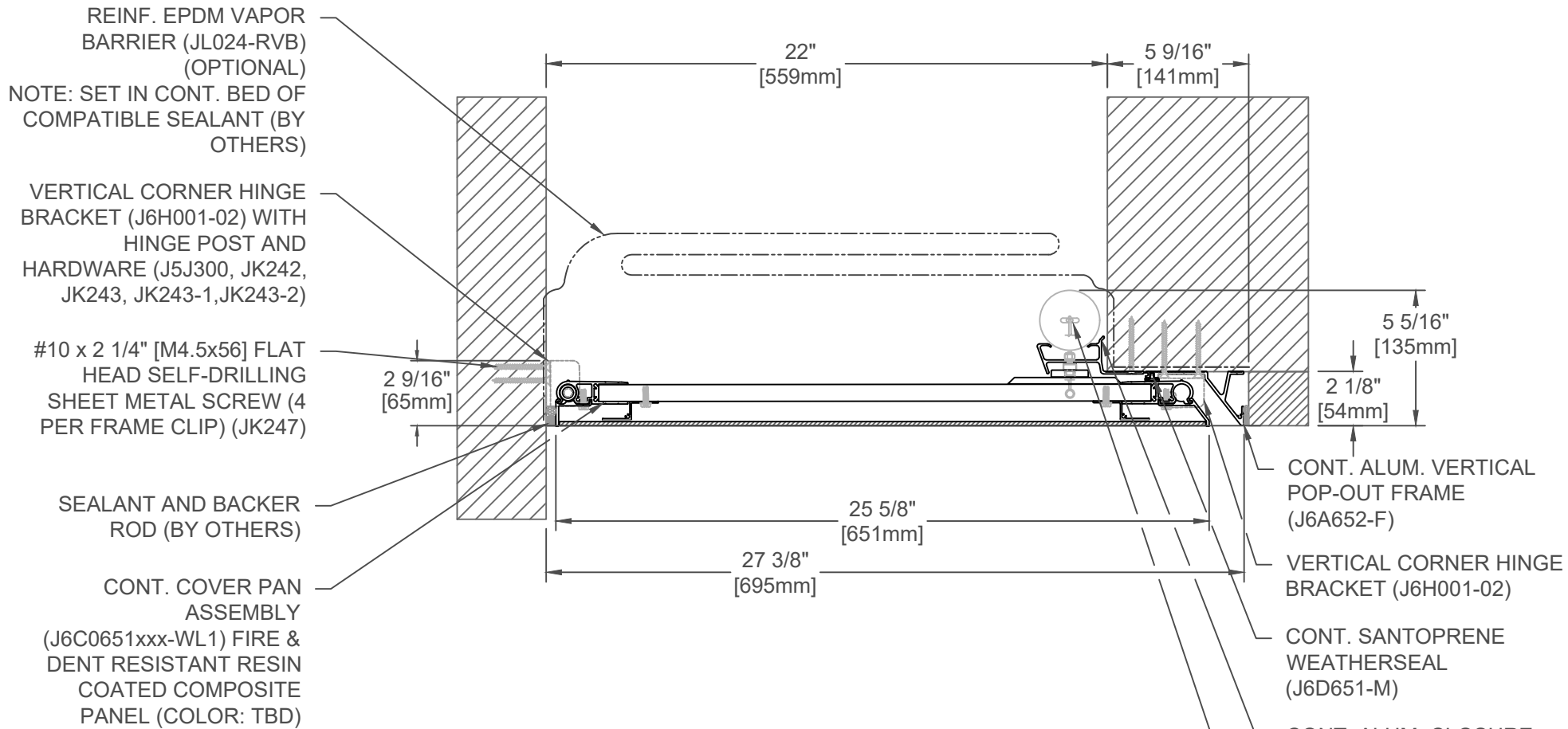
FINISH: CLEAR ANODIZED - ALUM
PROJECT:
CUSTOMER:
LOCATION:

APPLICATION - EXTERIOR
WALL/CORNER CONCEALED PAN EXPANSION JOINT SYSTEM

DATE:	9/4/18
SCALE:	1:6
DOC:	CADJM.249/R1



For More Information Visit: Inprocorp.com



650C-A09-550

SPECIFY PANEL COLOR:		
CLEAR ANO. (MNC)	ALUM. GRAY (AGT)	
BONE WHITE (BNT)	DEEP GRAY (BGY)	
OYSTER (CRT)	CHARCOAL (CNC)	
BRONZE (JBR)	BLACK (BLK)	

JOINT WIDTH		MOVEMENT			
		MINIMUM		MAXIMUM	
US	mm	US	mm	US	mm
22"	559	2 3/4"	70	44"	1118

FINISH: CLEAR ANODIZED - ALUM
PROJECT:
CUSTOMER:
LOCATION:

APPLICATION - EXTERIOR
WALL/CORNER CONCEALED PAN EXPANSION JOINT SYSTEM

DATE: 9/4/18
SCALE: 1:6
DOC: CADJM.249/R1



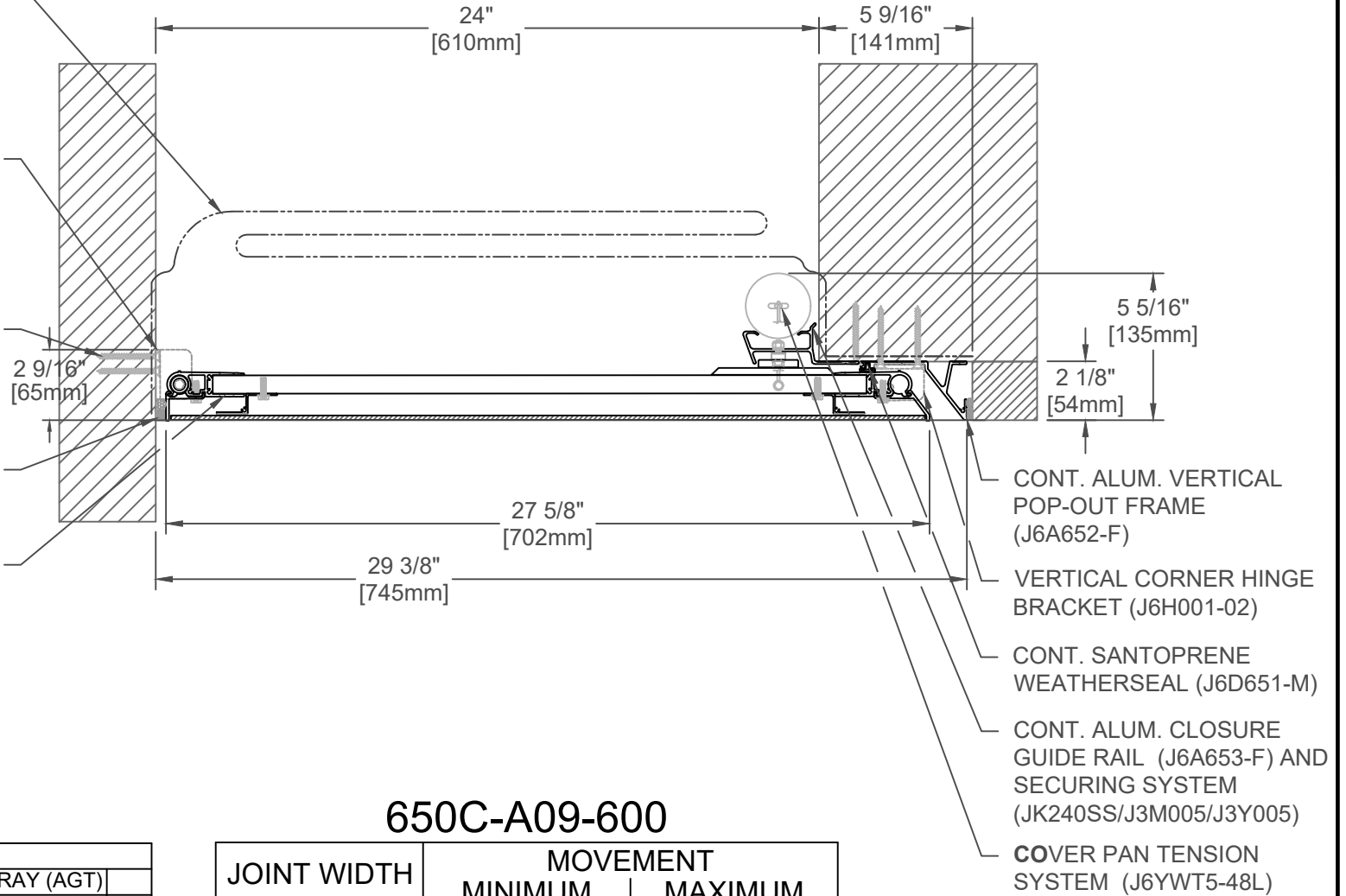
REINF. EPDM VAPOR BARRIER (JL024-RVB) (OPTIONAL)
 NOTE: SET IN CONT. BED OF COMPATIBLE SEALANT (BY OTHERS)

VERTICAL CORNER HINGE BRACKET (J6H001-02) WITH HINGE POST AND HARDWARE (J5J300, JK242, JK243, JK243-1, JK243-2)

#10 x 2 1/4" [M4.5x56] FLAT HEAD SELF-DRILLING SHEET METAL SCREW (4 PER FRAME CLIP) (JK247)

SEALANT AND BACKER ROD (BY OTHERS)

CONT. COVER PAN ASSEMBLY (J6C0702xxx-WL1) FIRE & DENT RESISTANT RESIN COATED COMPOSITE PANEL (COLOR: TBD)



650C-A09-600

SPECIFY PANEL COLOR:		
CLEAR ANO. (MNC)	ALUM. GRAY (AGT)	
BONE WHITE (BNT)	DEEP GRAY (BGY)	
OYSTER (CRT)	CHARCOAL (CNC)	
BRONZE (JBR)	BLACK (BLK)	

JOINT WIDTH		MOVEMENT			
		MINIMUM		MAXIMUM	
US	mm	US	mm	US	mm
24"	610	2 3/4"	70	48"	1219

FINISH: CLEAR ANODIZED - ALUM

PROJECT:

CUSTOMER:

LOCATION:

APPLICATION - EXTERIOR
 WALL/CORNER CONCEALED PAN EXPANSION JOINT SYSTEM

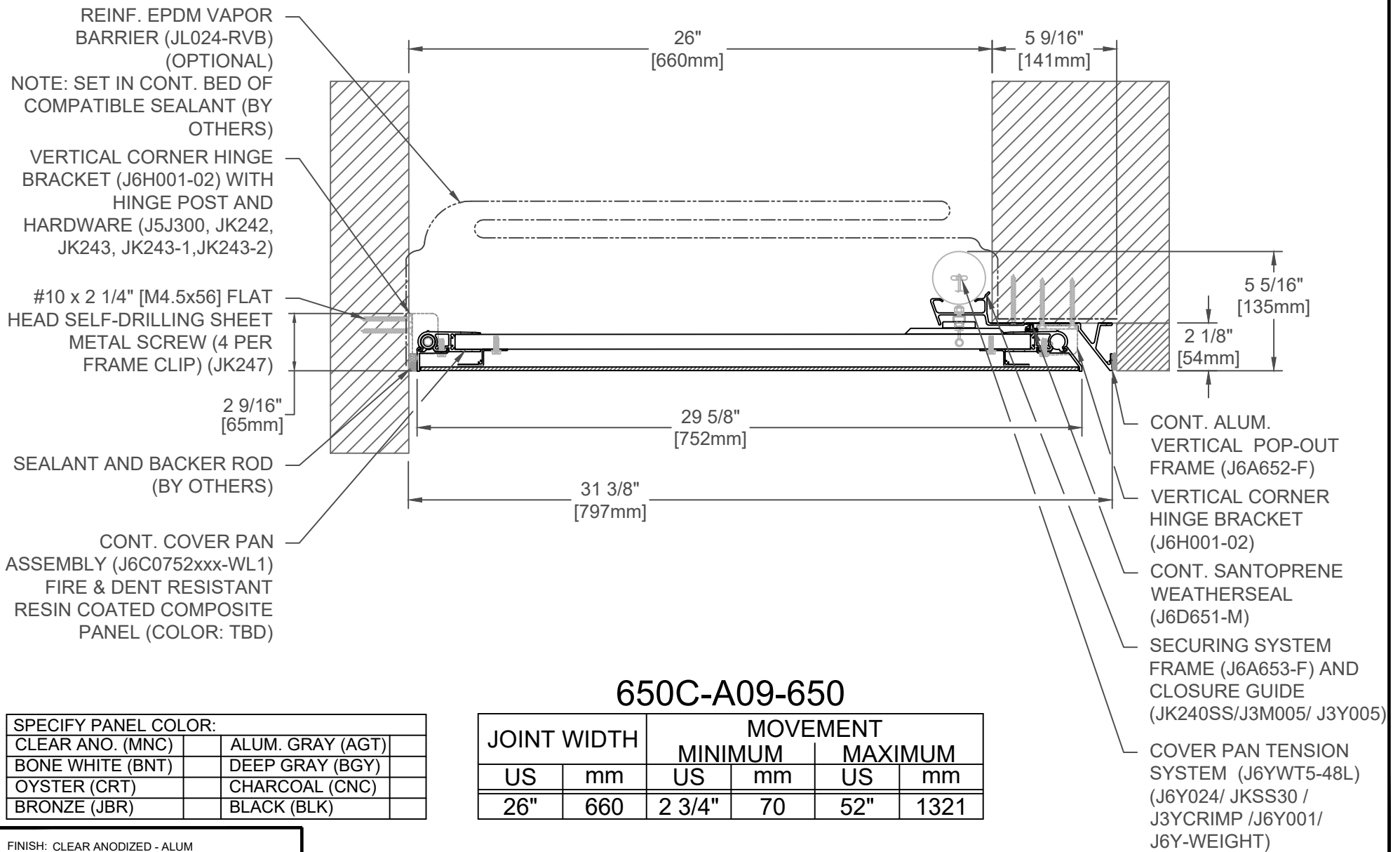
DATE: 9/4/18

SCALE: 1:6

DOC: CADJM.249/R1

inpro.

For More Information Visit: Inprocorp.com

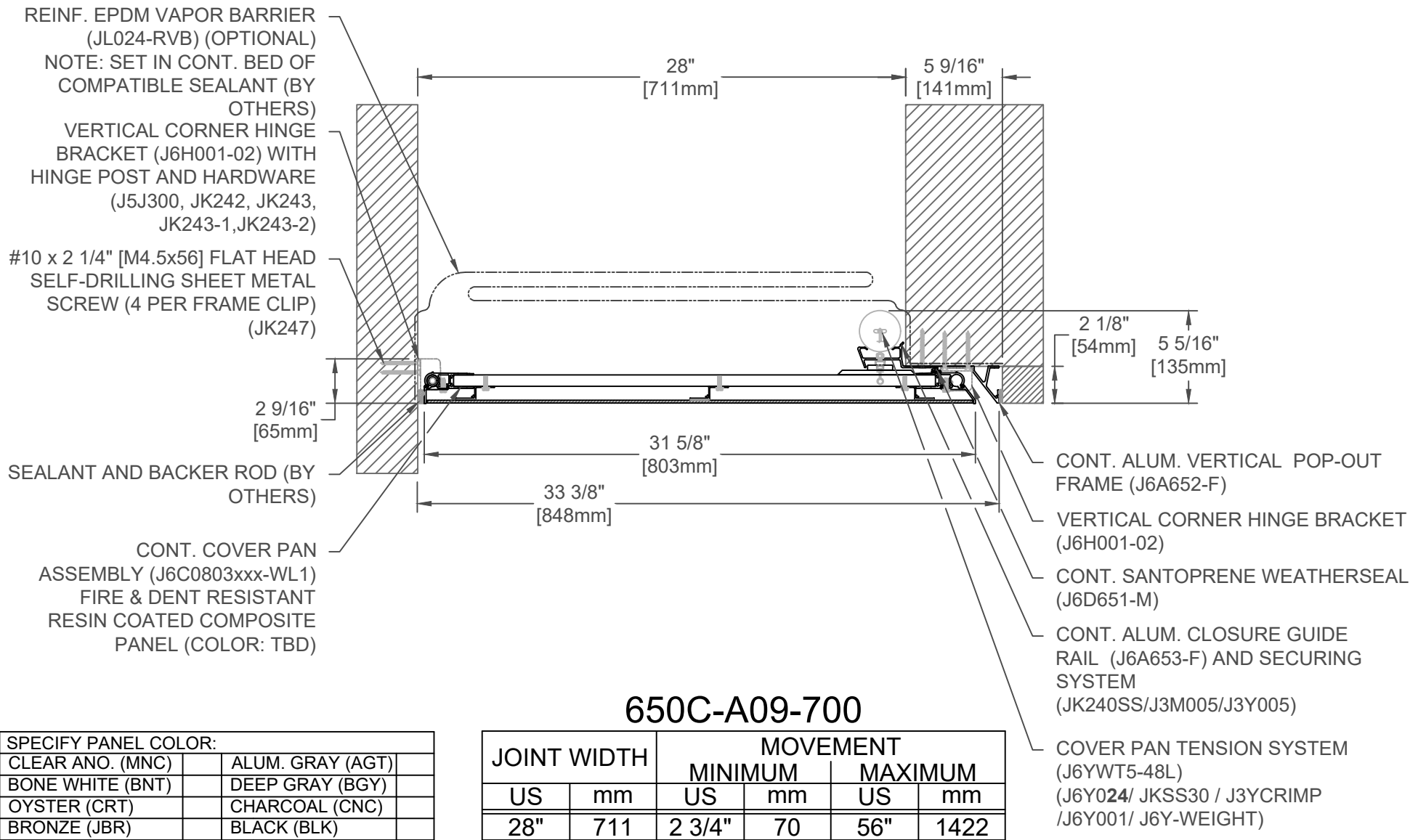


FINISH: CLEAR ANODIZED - ALUM	
PROJECT:	
CUSTOMER:	
LOCATION:	

APPLICATION - EXTERIOR
WALL/CORNER CONCEALED PAN EXPANSION JOINT SYSTEM

DATE:	9/4/18
SCALE:	1:6
DOC:	CADJM.249/R1





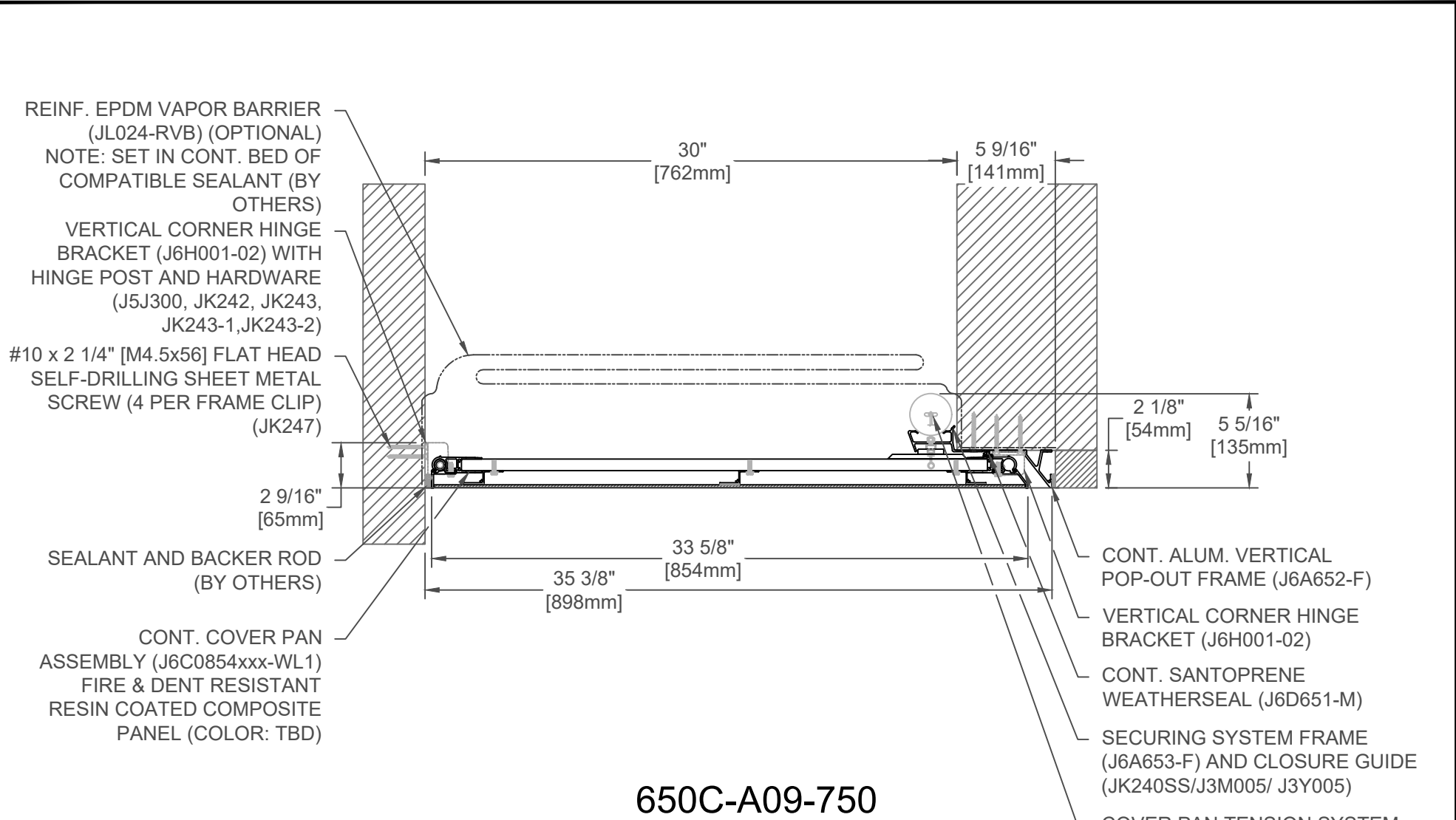
FINISH: CLEAR ANODIZED - ALUM
PROJECT:
CUSTOMER:
LOCATION:

APPLICATION - EXTERIOR
WALL/CORNER CONCEALED PAN EXPANSION JOINT SYSTEM

DATE:	9/4/18
SCALE:	1:8
DOC:	CADJM.249/R1



For More Information Visit: Inprocorp.com



650C-A09-750

SPECIFY PANEL COLOR:	
CLEAR ANO. (MNC)	ALUM. GRAY (AGT)
BONE WHITE (BNT)	DEEP GRAY (BGY)
OYSTER (CRT)	CHARCOAL (CNC)
BRONZE (JBR)	BLACK (BLK)

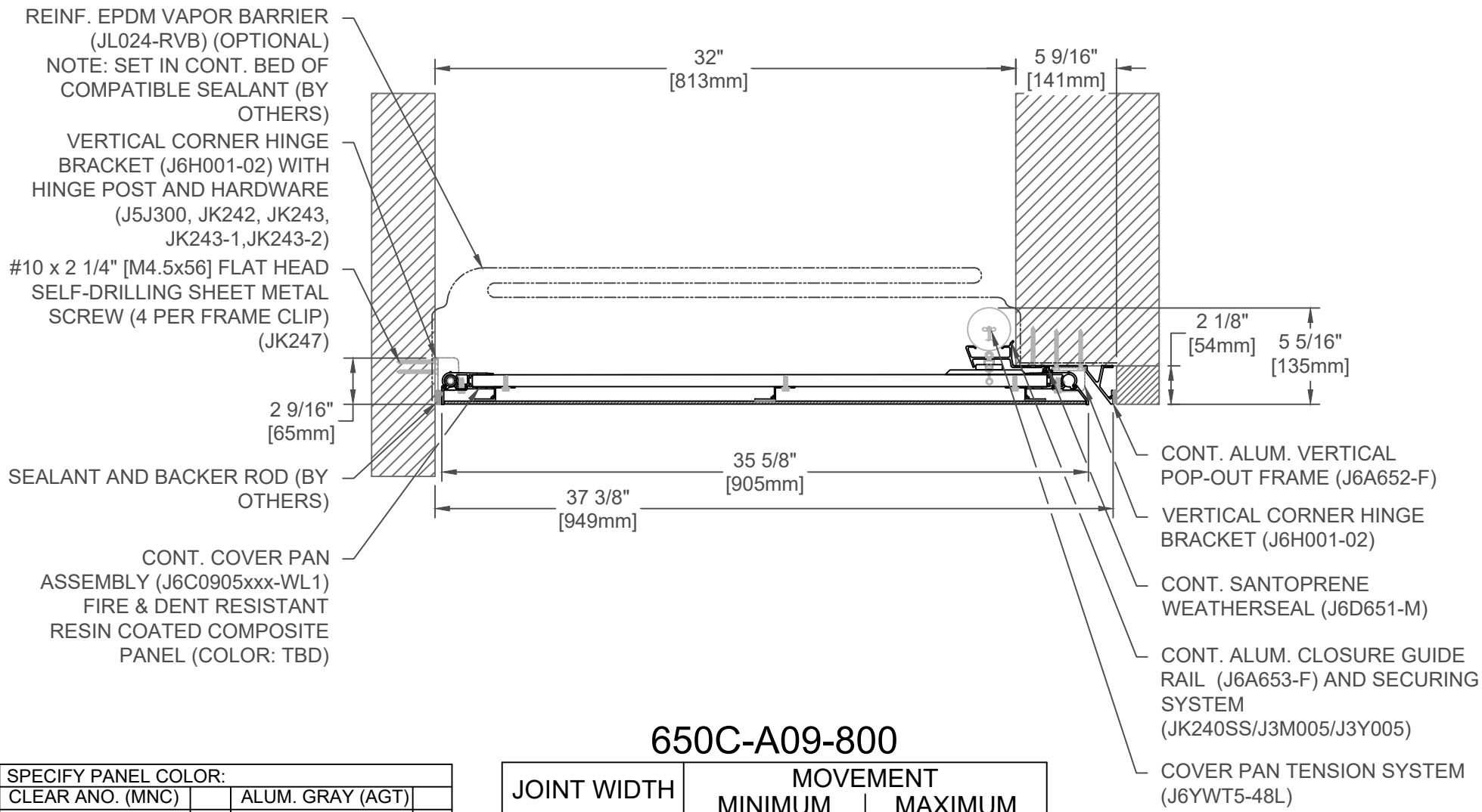
JOINT WIDTH		MOVEMENT			
		MINIMUM		MAXIMUM	
US	mm	US	mm	US	mm
30"	762	2 3/4"	70	60"	1524

FINISH: CLEAR ANODIZED - ALUM
PROJECT:
CUSTOMER:
LOCATION:

APPLICATION - EXTERIOR
WALL/CORNER CONCEALED PAN EXPANSION JOINT SYSTEM

DATE:	9/4/18
SCALE:	1:8
DOC:	CADJM.249/R1

inpro.
For More Information Visit: Inprocorp.com



650C-A09-800

SPECIFY PANEL COLOR:		
CLEAR ANO. (MNC)		ALUM. GRAY (AGT)
BONE WHITE (BNT)		DEEP GRAY (BGY)
OYSTER (CRT)		CHARCOAL (CNC)
BRONZE (JBR)		BLACK (BLK)

JOINT WIDTH		MOVEMENT			
		MINIMUM		MAXIMUM	
US	mm	US	mm	US	mm
32"	813	2 3/4"	70	64"	1626

FINISH: CLEAR ANODIZED - ALUM
PROJECT:
CUSTOMER:
LOCATION:

APPLICATION - EXTERIOR
WALL/CORNER CONCEALED PAN EXPANSION JOINT SYSTEM

DATE: 9/4/18
SCALE: 1:8
DOC: CADJM.249/R1

