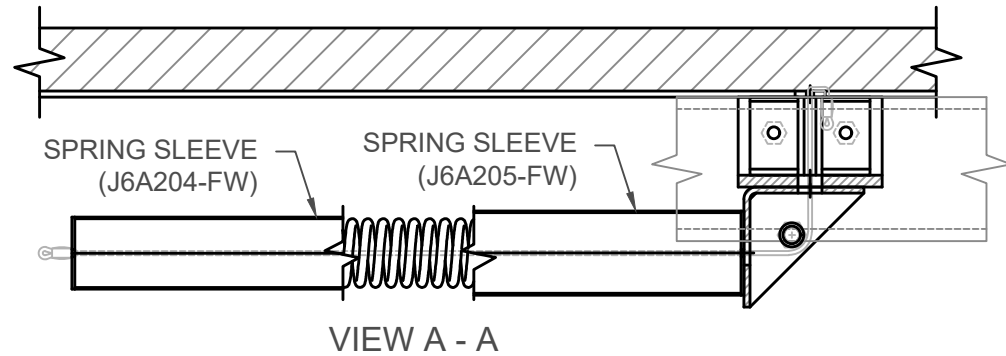


**601-A07/A09-300  
THERMAL**

JOINT WIDTH		MOVEMENT ±			
		HORIZONTAL		VERTICAL	
US	mm	US	mm	US	mm
12"	305	1"	25	1"	25

**SEISMIC**

JOINT WIDTH		MOVEMENT ±			
		HORIZONTAL		VERTICAL	
US	mm	US	mm	US	mm
12"	305	6"	152	6"	152



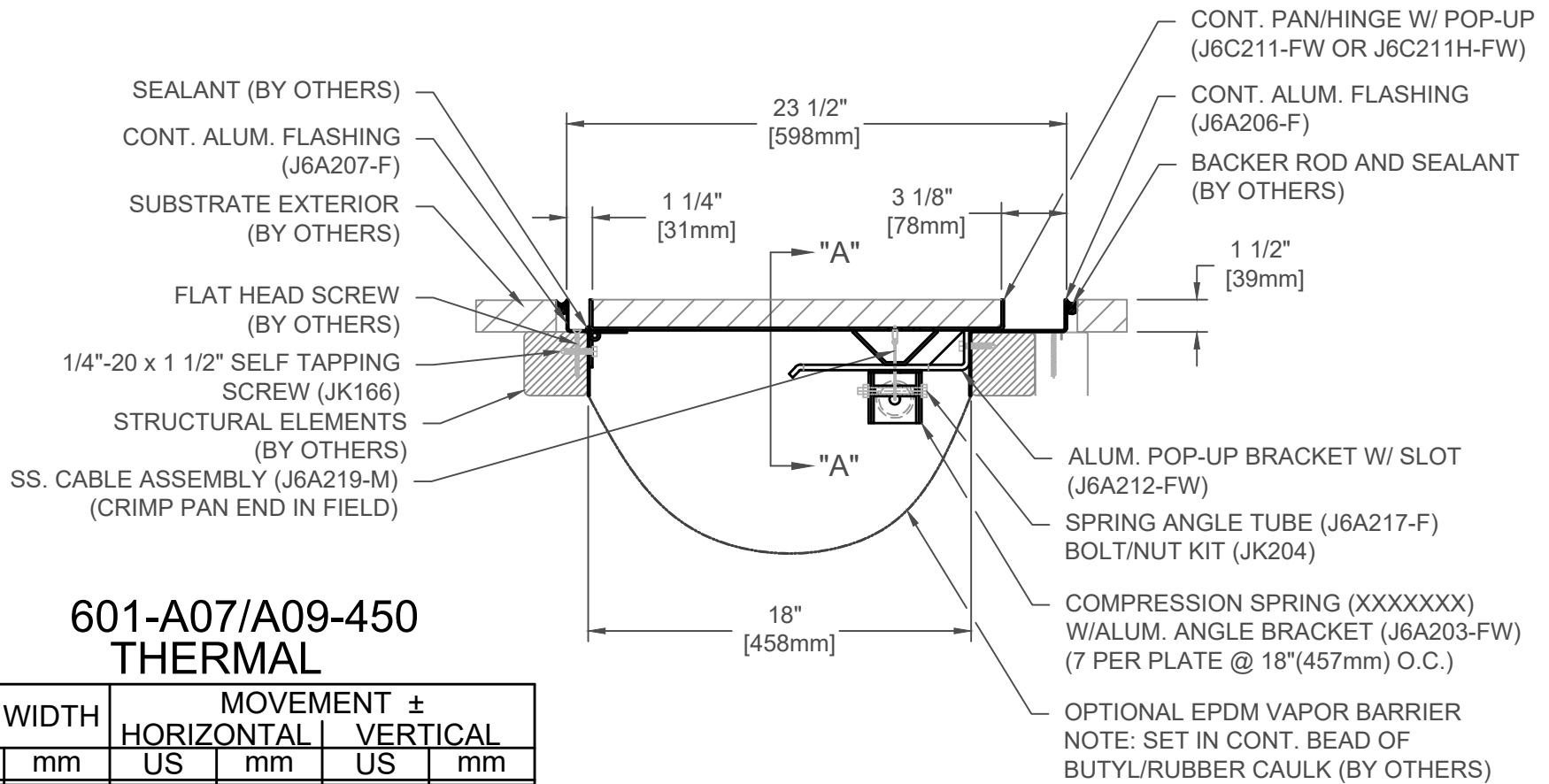
FINISH: MILL
PROJECT:
CUSTOMER:
LOCATION:

APPLICATION-  
EXTERIOR POP-UP SYSTEM  
WALL/WALL & WALL/CORNER CONDITION

DATE:	9-11-12
SCALE:	1:4
DOC:	CADJM.141/R3



For More Information Visit: [Inprocorp.com](http://Inprocorp.com)



## 601-A07/A09-450 THERMAL

JOINT WIDTH		MOVEMENT ±			
		HORIZONTAL		VERTICAL	
US	mm	US	mm	US	mm
18"	457	1"	25	1"	25

## SEISMIC

JOINT WIDTH		MOVEMENT ±			
		HORIZONTAL		VERTICAL	
US	mm	US	mm	US	mm
18"	457	9"	229	9"	229

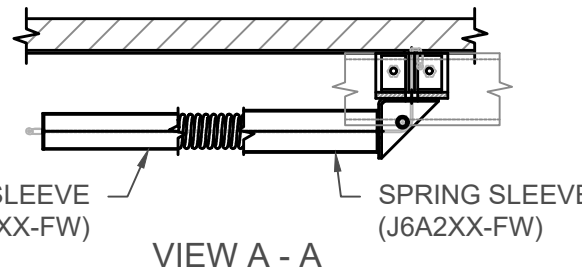
FINISH: MILL
PROJECT:
CUSTOMER:
LOCATION:

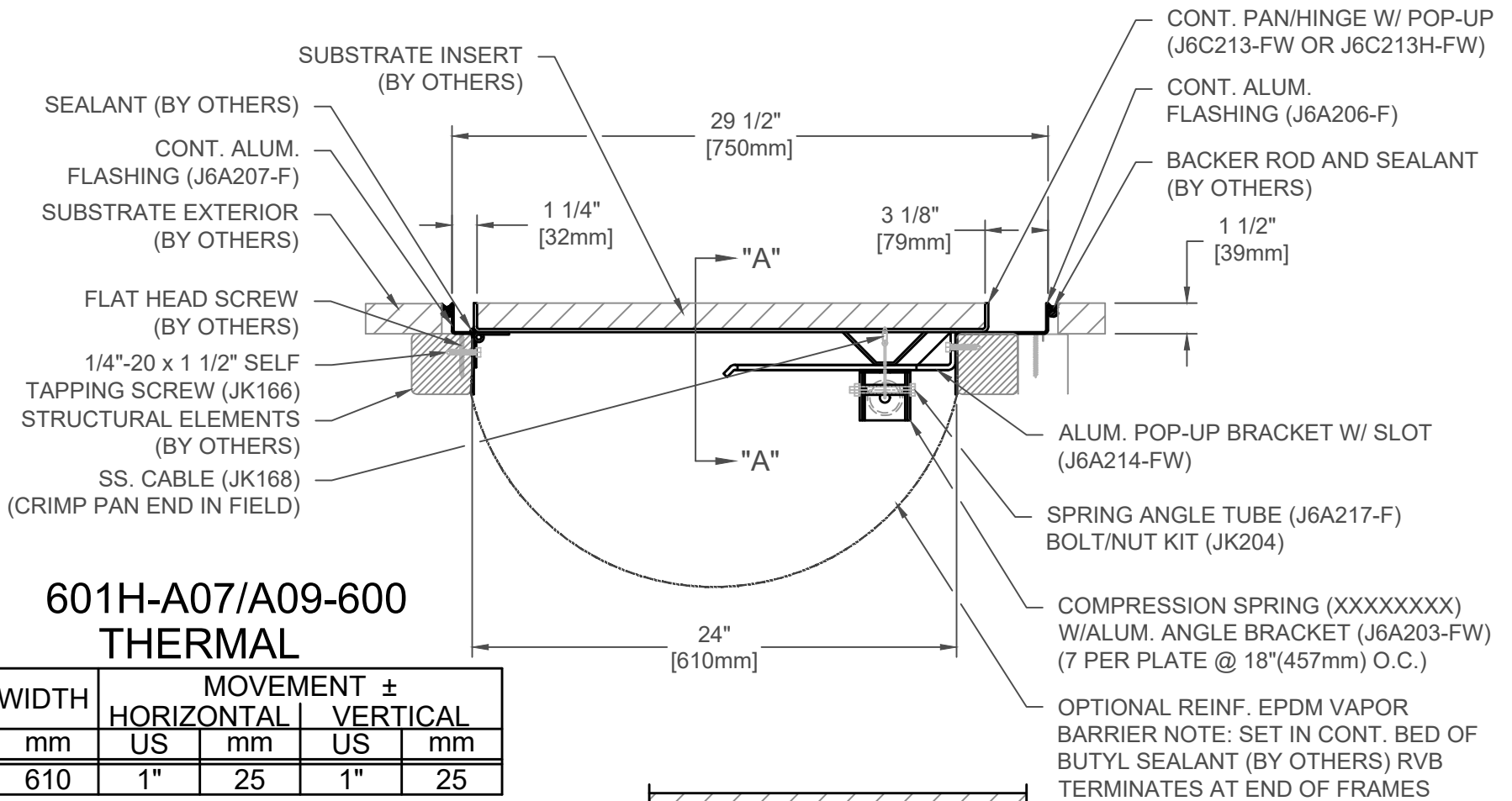
APPLICATION-  
EXTERIOR POP-UP SYSTEM  
WALL/WALL & WALL/CORNER CONDITION

DATE:	9-11-12
SCALE:	1:8
DOC:	CADJM.141/R3

**inpro.**

For More Information Visit: [Inprocorp.com](http://Inprocorp.com)



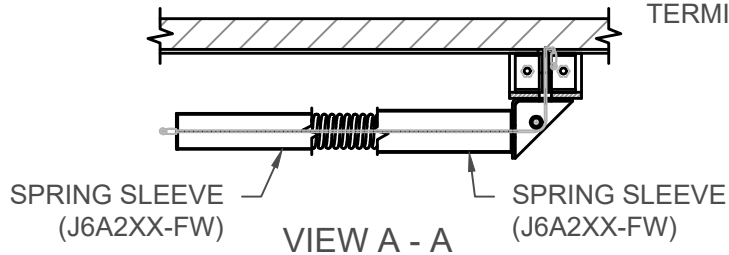


**601H-A07/A09-600  
THERMAL**

JOINT WIDTH		MOVEMENT ±			
		HORIZONTAL		VERTICAL	
US	mm	US	mm	US	mm
24"	610	1"	25	1"	25

**SEISMIC**

JOINT WIDTH		MOVEMENT ±			
		HORIZONTAL		VERTICAL	
US	mm	US	mm	US	mm
24"	610	12"	305	12"	305



FINISH: MILL
PROJECT:
CUSTOMER:
LOCATION:

APPLICATION-  
 EXTERIOR POP-UP SYSTEM  
 WALL/WALL & WALL/CORNER CONDITION

DATE:	9-11-12
SCALE:	1:8
DOC:	CADJM.141/R3



For More Information Visit: [Inprocorp.com](http://Inprocorp.com)