

353-A09-150P

JOINT WIDTH		MOVEMENT			
		MINIMUM		MAXIMUM	
US	mm	US	mm	US	mm
6"	152	2 3/4"	70	12"	305

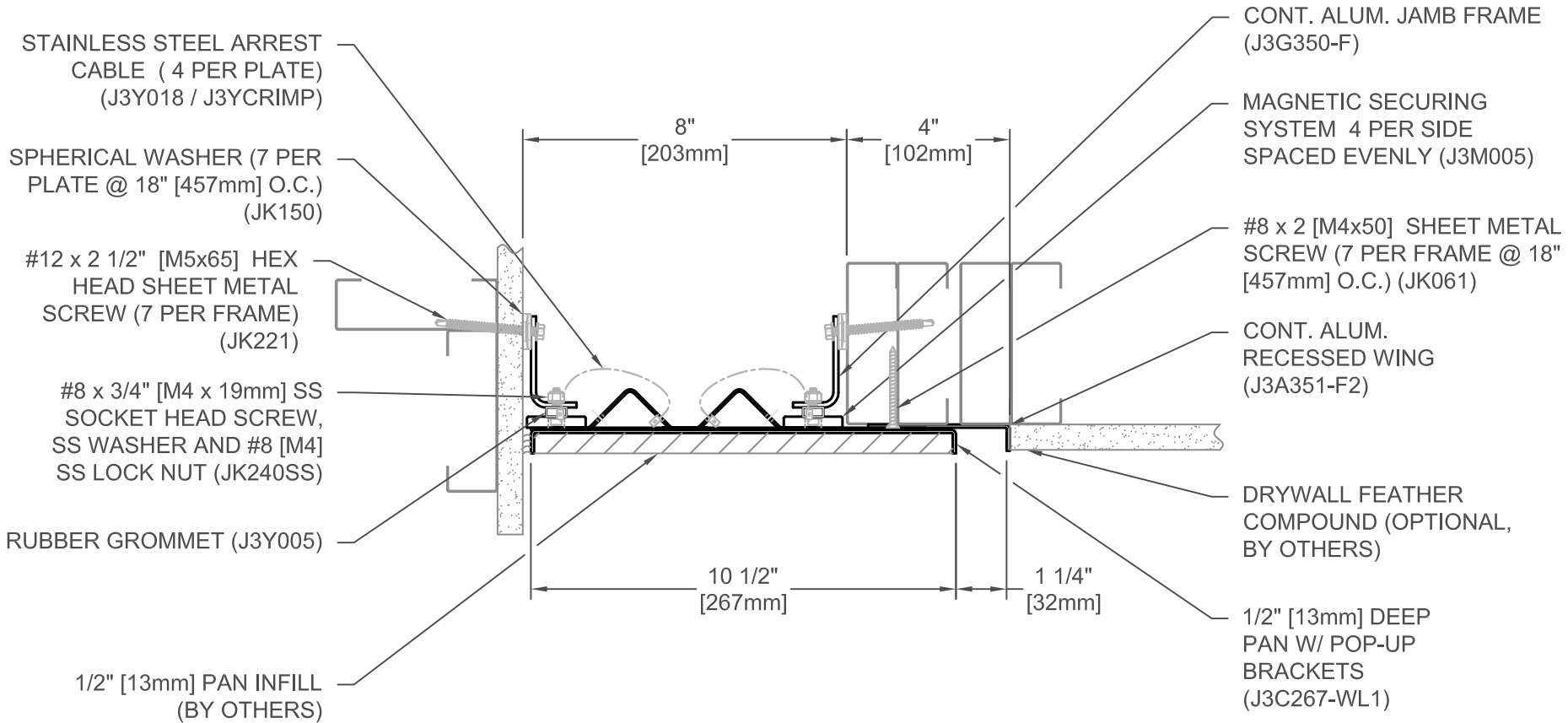
FINISH: MILL
PROJECT:
CUSTOMER:
LOCATION:

APPLICATION -
WALL/CORNER CONCEALED PAN EXPANSION JOINT SYSTEM-
ACCEPTS VARIETY OF WALL FINISHES

DATE:	9/4/18
SCALE:	1:4
DOC:	CADJM.201/R2



For More Information Visit: Inprocorp.com



353-A09-200P

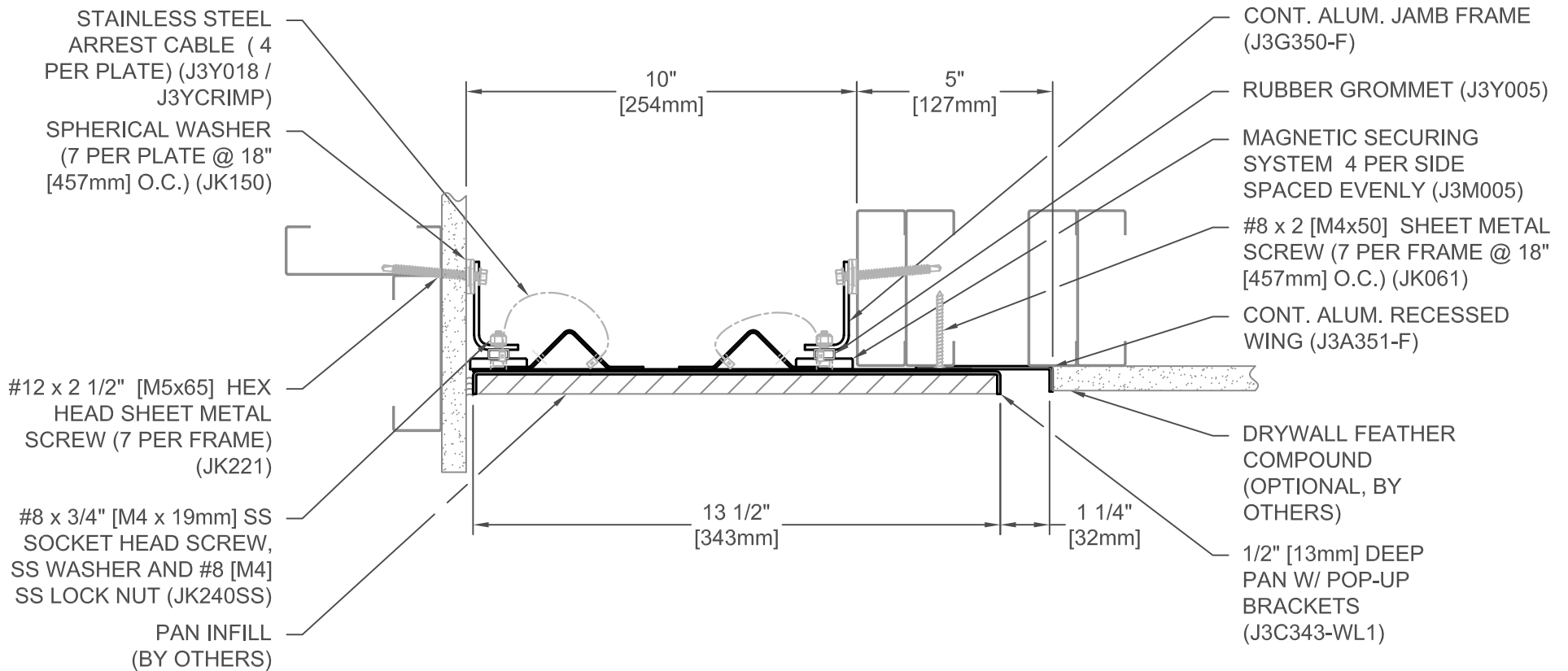
JOINT WIDTH		MOVEMENT			
		MINIMUM		MAXIMUM	
US	mm	US	mm	US	mm
8"	203	2 3/4"	70	16"	406

FINISH: MILL
PROJECT:
CUSTOMER:
LOCATION:

APPLICATION -
WALL/CORNER CONCEALED PAN EXPANSION JOINT SYSTEM-
ACCEPTS VARIETY OF WALL FINISHES

DATE:	9/4/18
SCALE:	1:4
DOC:	CADJM.201/R2





353-A09-250P

JOINT WIDTH		MOVEMENT			
		MINIMUM		MAXIMUM	
US	mm	US	mm	US	mm
10"	254	2 3/4"	70	20"	508

FINISH: MILL
PROJECT:
CUSTOMER:
LOCATION:

APPLICATION -
WALL/CORNER CONCEALED PAN EXPANSION JOINT SYSTEM-
ACCEPTS VARIETY OF WALL FINISHES

DATE:	9/4/18
SCALE:	1:4
DOC:	CADJM.201/R2



For More Information Visit: Inprocorp.com

STAINLESS STEEL ARREST
CABLE (4 PER PLATE)
(J3Y018 / J3YCRIMP)

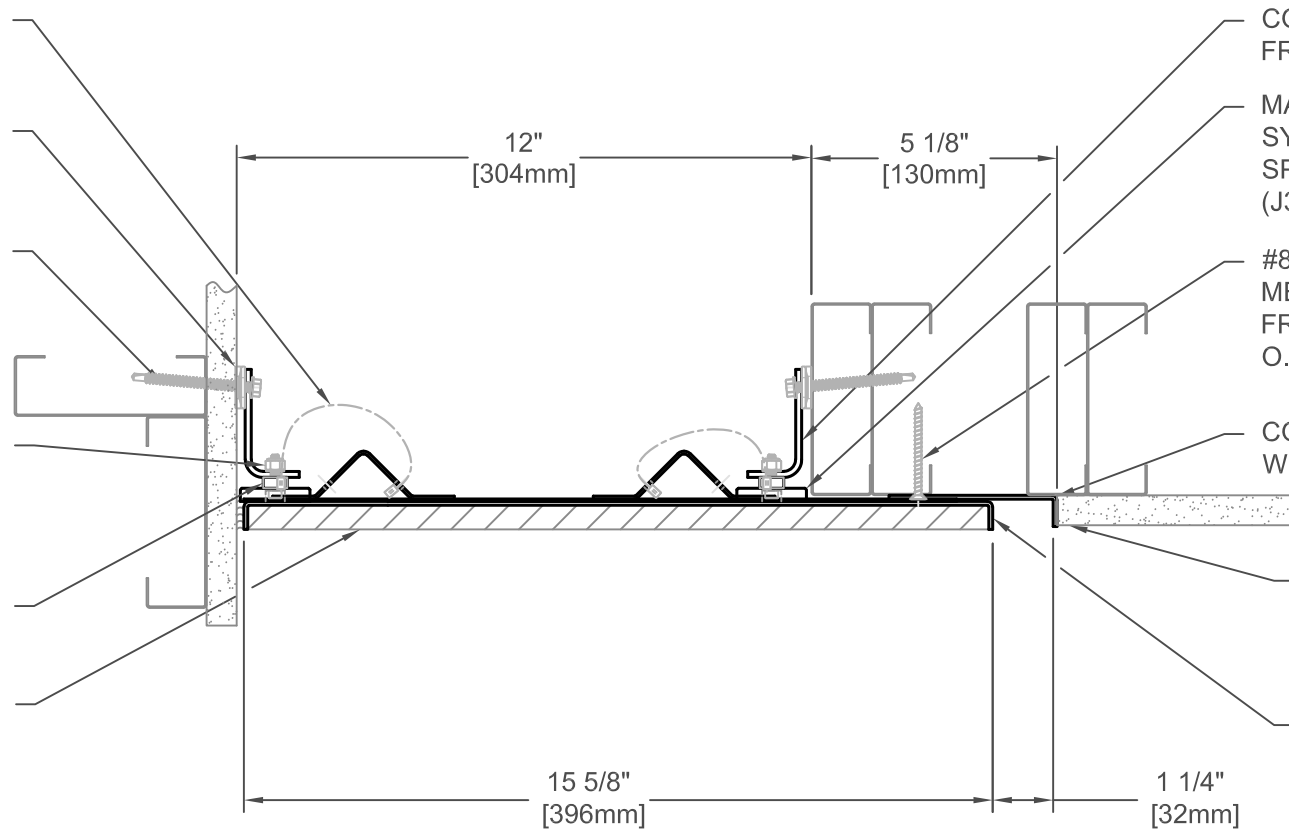
SPHERICAL WASHER
(7 PER PLATE @ 18"
[457mm] O.C.) (JK150)

#12 x 2 1/2" [M5x65]
HEX HEAD SHEET
METAL SCREW (7 PER
FRAME) (JK221)

#8 x 3/4" [M4 x 19mm] SS
SOCKET HEAD SCREW,
SS WASHER AND #8 [M4]
SS LOCK NUT (JK240SS)

RUBBER GROMMET
(J3Y005)

PAN INFILL
(BY OTHERS)



CONT. ALUM. JAMB
FRAME (J3G350-F)

MAGNETIC SECURING
SYSTEM 4 PER SIDE
SPACED EVENLY
(J3M005)

#8 x 2 [M4x50] SHEET
METAL SCREW (7 PER
FRAME @ 18" [457mm]
O.C.) (JK061)

CONT. ALUM. RECESSED
WING (J3A351-F)

DRYWALL FEATHER
COMPOUND
(OPTIONAL, BY
OTHERS)

1/2" [13mm] DEEP
PAN W/ POP-UP
BRACKETS
(J3C397-WL1)

353-A09-300P

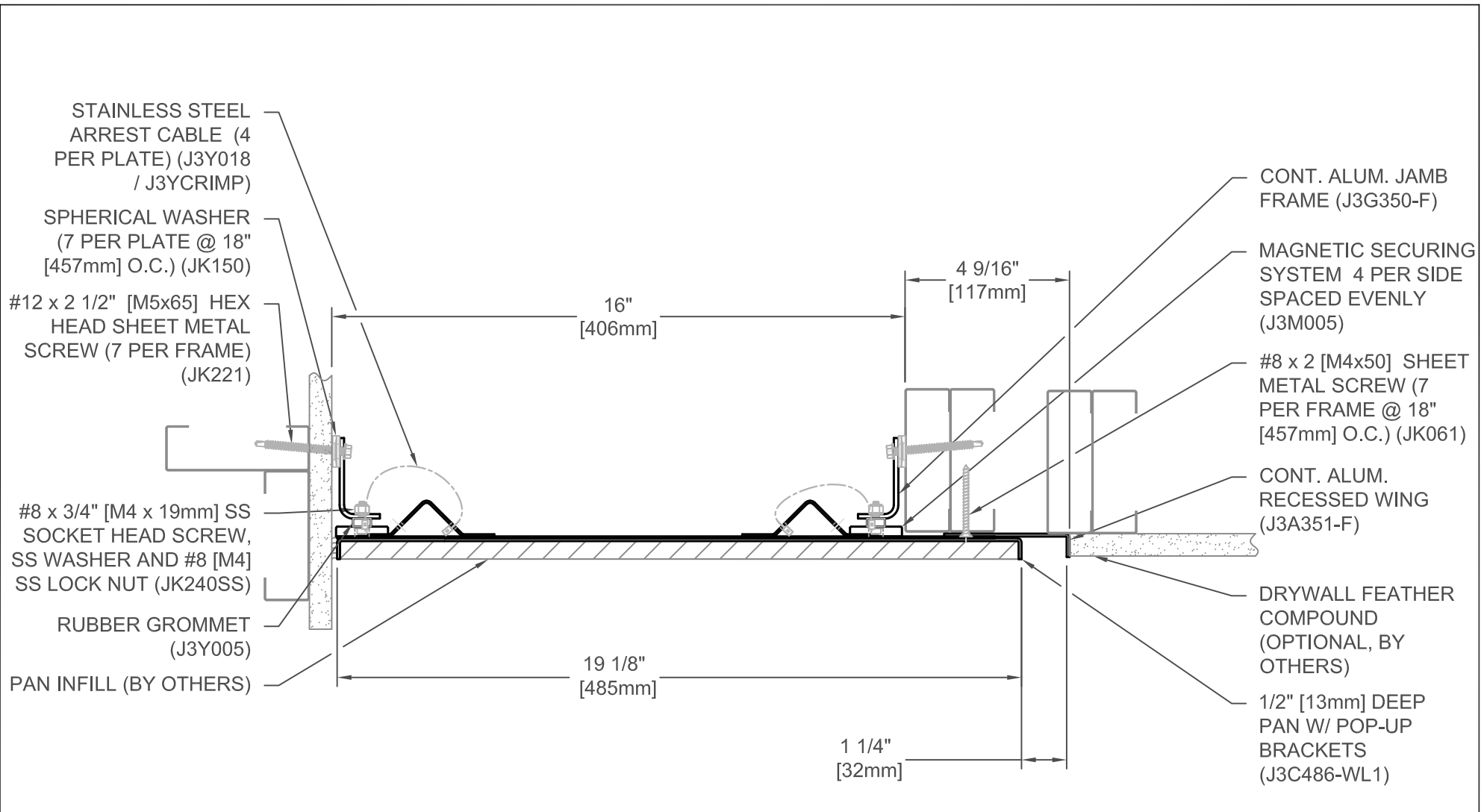
JOINT WIDTH		MOVEMENT			
		MINIMUM		MAXIMUM	
US	mm	US	mm	US	mm
12"	305	2 3/4"	70	24"	610

FINISH: MILL
PROJECT:
CUSTOMER:
LOCATION:

APPLICATION -
WALL/CORNER CONCEALED PAN EXPANSION JOINT SYSTEM-
ACCEPTS VARIETY OF WALL FINISHES

DATE:	9/4/18
SCALE:	1:4
DOC:	CADJM.201/R2

inpro.
For More Information Visit: Inprocorp.com



353-A09-400P

JOINT WIDTH		MOVEMENT			
		MINIMUM		MAXIMUM	
US	mm	US	mm	US	mm
16"	406	2 3/4"	70	32"	813

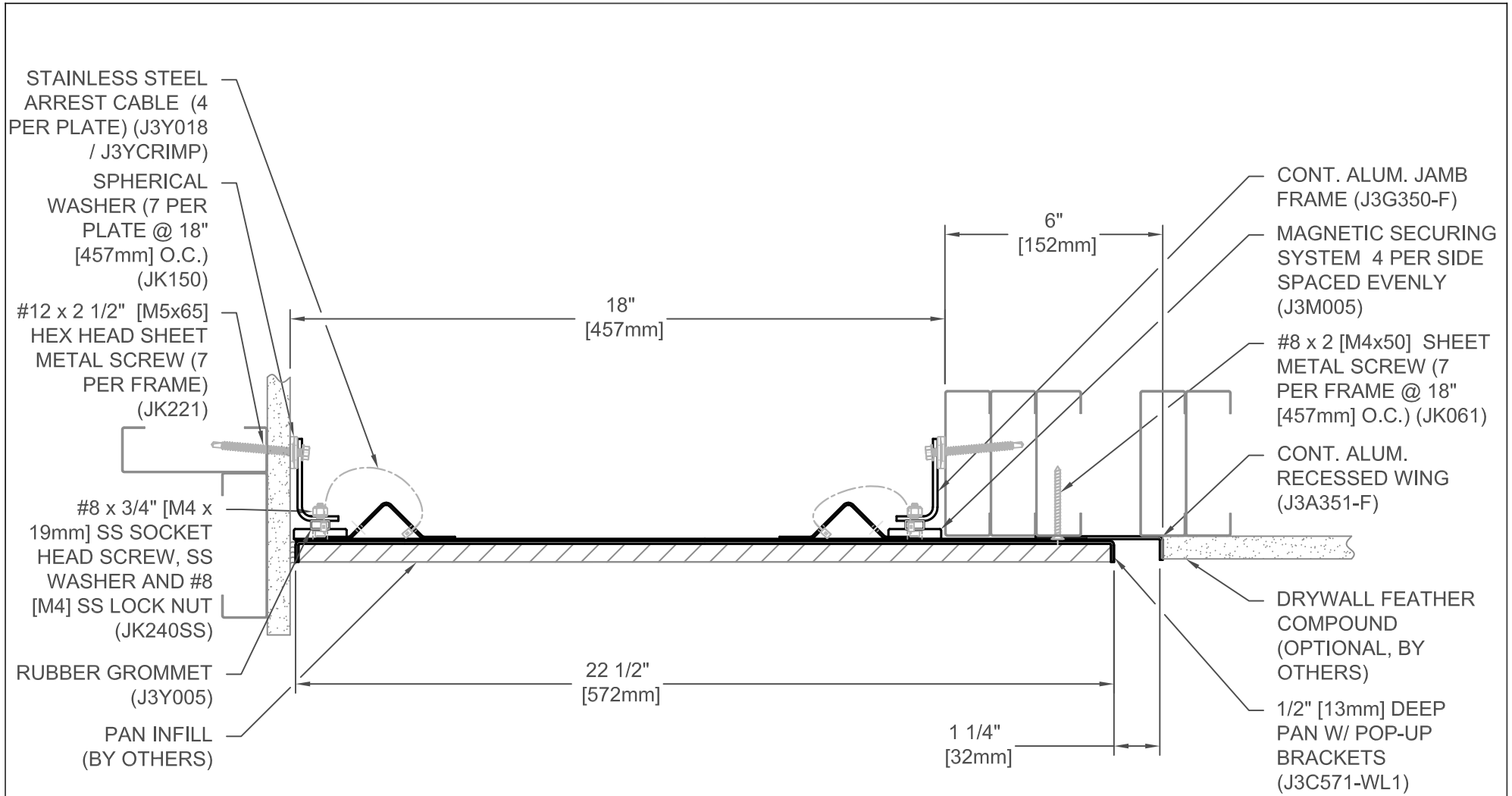
FINISH: MILL
PROJECT:
CUSTOMER:
LOCATION:

APPLICATION -
WALL/CORNER CONCEALED PAN EXPANSION JOINT SYSTEM-
ACCEPTS VARIETY OF WALL FINISHES

DATE:	9/4/18
SCALE:	1:4
DOC:	CADJM.201/R2



For More Information Visit: Inprocorp.com



353-A09-450P

JOINT WIDTH		MOVEMENT			
		MINIMUM		MAXIMUM	
US	mm	US	mm	US	mm
18"	457	2 3/4"	70	36"	914

FINISH: MILL
PROJECT:
CUSTOMER:
LOCATION:

APPLICATION -
WALL/CORNER CONCEALED PAN EXPANSION JOINT SYSTEM-
ACCEPTS VARIETY OF WALL FINISHES

DATE:	9/4/18
SCALE:	1:4
DOC:	CADJM.201/R2



For More Information Visit: Inprocorp.com

STAINLESS STEEL ARREST CABLE
(4 PER PLATE) (J3Y018 / J3YCRIMP)

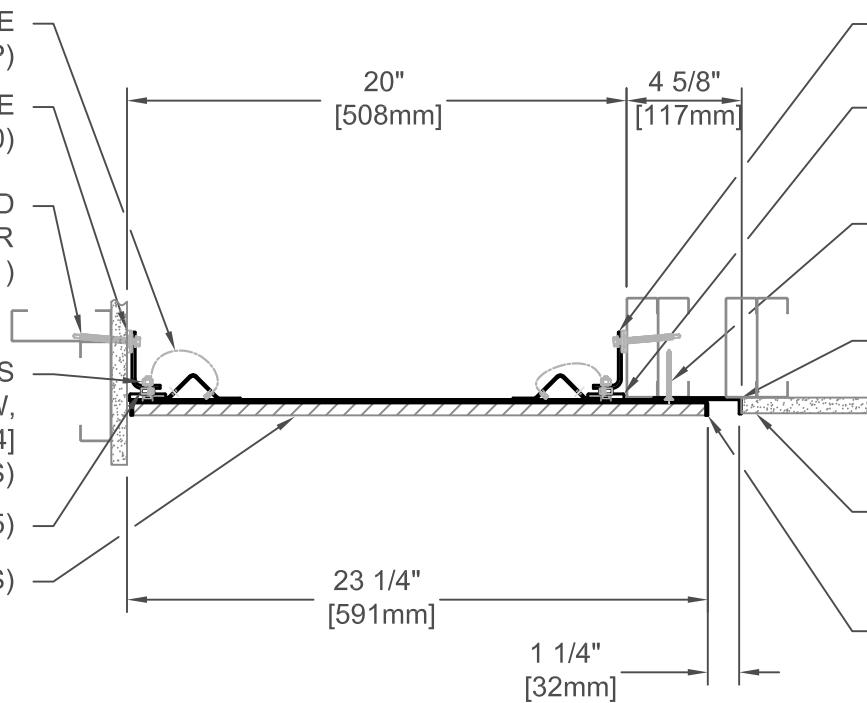
SPHERICAL WASHER (7 PER PLATE
@ 18" [457mm] O.C.) (JK150)

#12 x 2 1/2" [M5x65] HEX HEAD
SHEET METAL SCREW (7 PER
FRAME) (JK221)

#8 x 3/4" [M4 x 19mm] SS
SOCKET HEAD SCREW,
SS WASHER AND #8 [M4]
SS LOCK NUT (JK240SS)

RUBBER GROMMET (J3Y005)

PAN INFILL (BY OTHERS)



CONT. ALUM. JAMB FRAME
(J3G350-F)

MAGNETIC SECURING SYSTEM
4 PER SIDE SPACED EVENLY
(J3M005)

#8 x 2 [M4x50] SHEET METAL
SCREW (7 PER FRAME @ 18"
[457mm] O.C.) (JK061)

CONT. ALUM. RECESSED WING
(J3A351-F)

DRYWALL FEATHER COMPOUND
(OPTIONAL, BY OTHERS)

1/2" [13mm] DEEP PAN W/
POP-UP BRACKETS
(J3C590-WL1)

353-A09-500P

JOINT WIDTH		MOVEMENT			
		MINIMUM		MAXIMUM	
US	mm	US	mm	US	mm
20"	508	2 3/4"	70	40"	1016

FINISH: MILL

PROJECT:

CUSTOMER:

LOCATION:

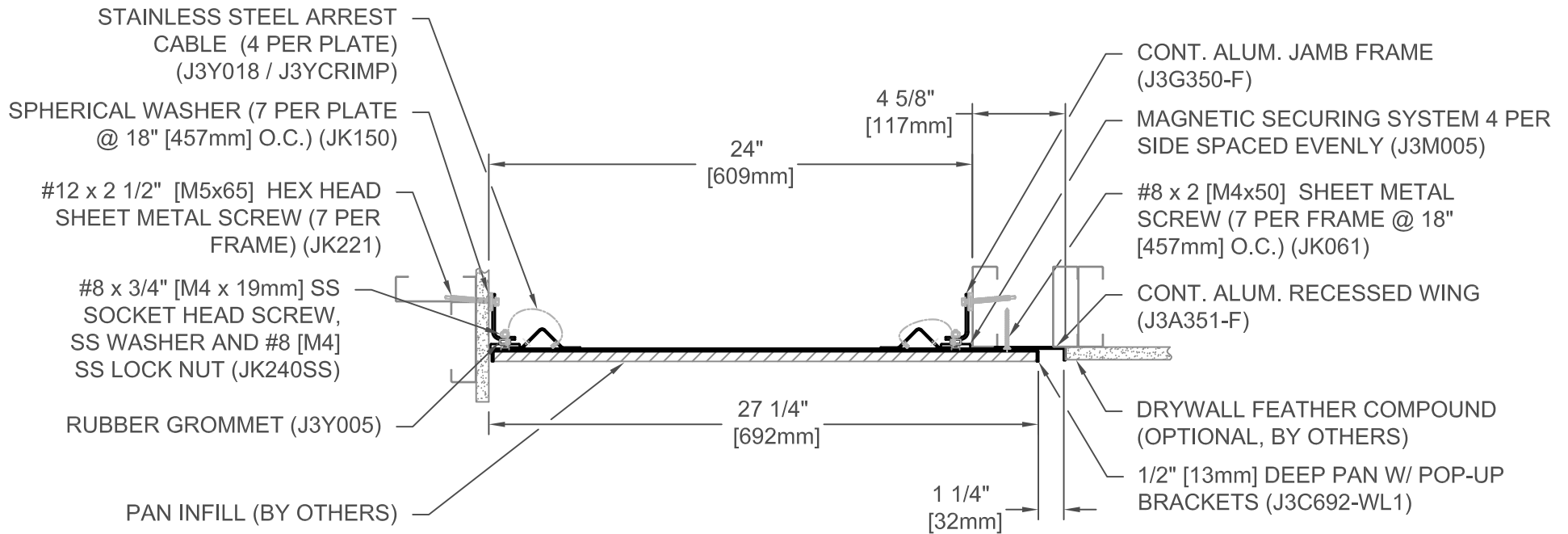
APPLICATION -
WALL/CORNER CONCEALED PAN EXPANSION JOINT SYSTEM-
ACCEPTS VARIETY OF WALL FINISHES

DATE: 9/4/18

SCALE: 1:8

DOC: CADJM.201/R2

inpro.
For More Information Visit: Inprocorp.com



353-A09-600P

JOINT WIDTH		MOVEMENT			
		MINIMUM		MAXIMUM	
US	mm	US	mm	US	mm
24"	610	2 3/4"	70	48"	1219

FINISH: MILL
PROJECT:
CUSTOMER:
LOCATION:

APPLICATION -
WALL/CORNER CONCEALED PAN EXPANSION JOINT SYSTEM-
ACCEPTS VARIETY OF WALL FINISHES

DATE:	9/4/18
SCALE:	1:8
DOC:	CADJM.201/R2



For More Information Visit: Inprocorp.com