

#8 X 2" [M4x50] SELF-TAPPING SHEET METAL SCREW (7 PER FRAME @ 18" [457mm] O.C.) (JK061)

- CONT. ALUM. RECESSED FRAME (J2A001)
- CONT. SANTOPRENE SEAL
- 3/8" [10mm] DRYWALL (BY OTHERS)
- CONT. ALUM. RECESSED HALF PLATE (J2C016-F)

223-A09-050

JOINT WIDTH		MOVEMENT ±			
		HORIZONTAL		VERTICAL	
US	mm	US	mm	US	mm
2"	51	1/2"	12	1/2"	12

NOTE:
 TO DETERMINE BLOCKOUT DEPTH,
 DEDUCT THICKNESS OF FLOOR FINISH
 FROM FRAME HEIGHT.
 LOW PROFILE OPTIONS AVAILABLE

SPECIFY SEAL COLOR:	
Black (J1D101)	
Beige (J1D102)	
Gray (J1D103)	
Off White (J1D104)	
Bright White (J1D105)	
Greige (J1D106)	

FINISH: ALUM. FINISH-MILL

PROJECT:

CUSTOMER:

LOCATION:

APPLICATION
 RECESSED FLOOR/WALL CONDITION
 RECESSED PLATE FOR 3/8" FLOORING

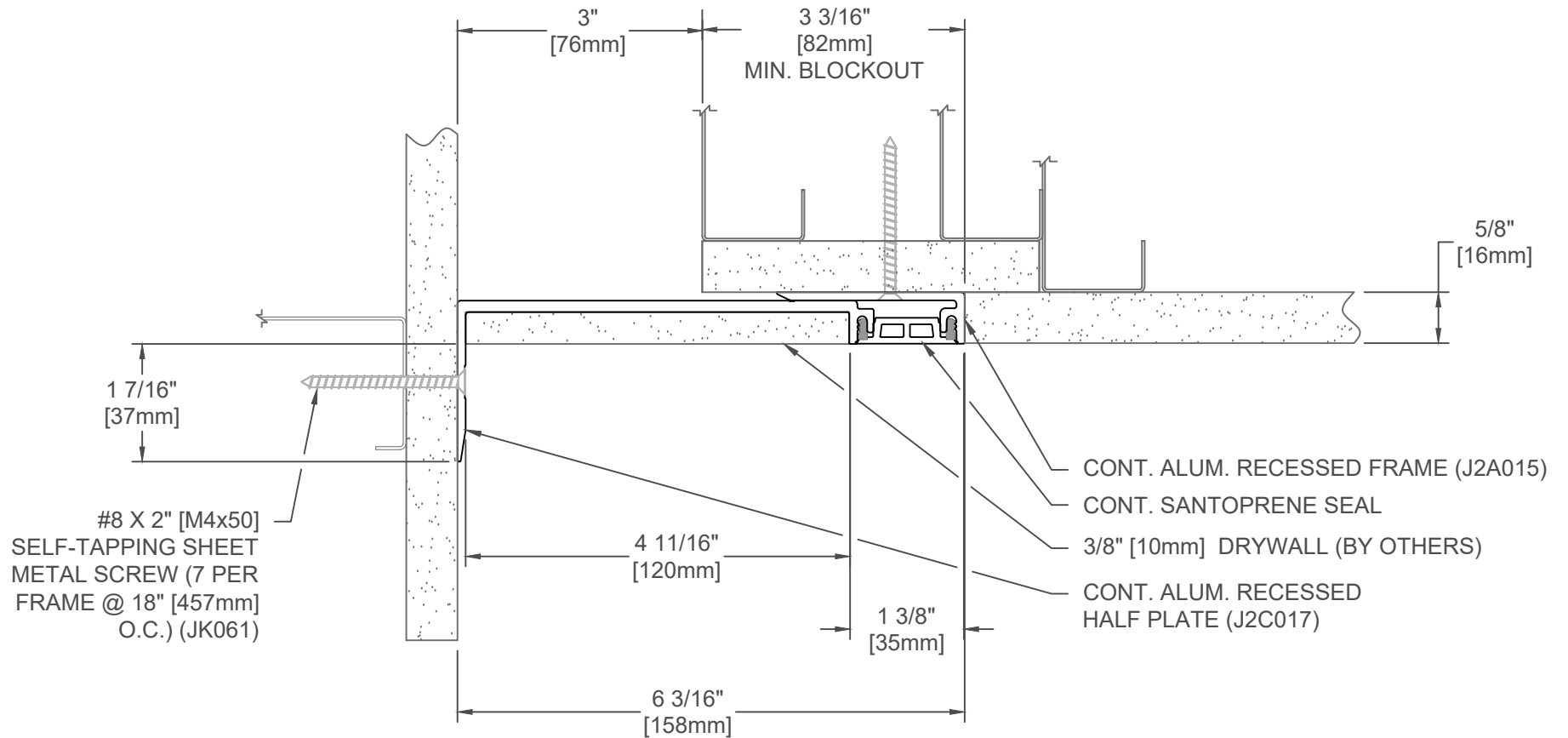
DATE: 03-08-2017

SCALE: 1:2

DOC: CADJM.103/R6

inpro.

For More Information Visit: Inprocorp.com



SPECIFY SEAL COLOR:	
Black (J1D151)	
Beige (J1D152)	
Gray (J1D153)	
Off White (J1D154)	
Bright White (J1D155)	
Greige (J1D156)	

223-A09-075

JOINT WIDTH		MOVEMENT ±			
		HORIZONTAL		VERTICAL	
US	mm	US	mm	US	mm
3"	76	3/4"	19	3/4"	19

NOTE:
TO DETERMINE BLOCKOUT DEPTH,
DEDUCT THICKNESS OF FLOOR FINISH
FROM FRAME HEIGHT.

FINISH: ALUM. FINISH-MILL

PROJECT:

CUSTOMER:

LOCATION:

APPLICATION
RECESSED FLOOR/WALL CONDITION
RECESSED PLATE FOR 3/8" FLOORING

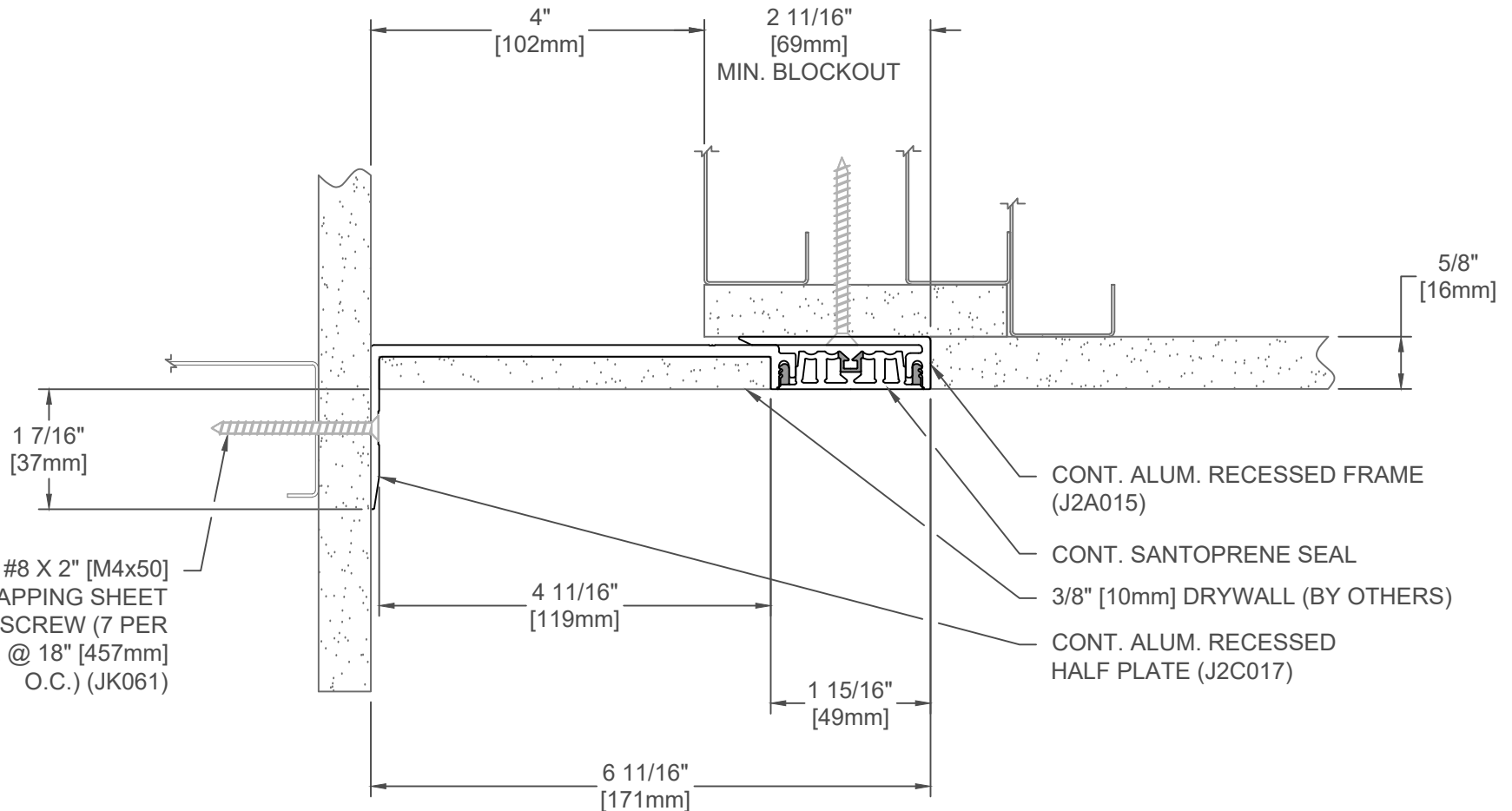
DATE: 03-08-2017

SCALE: 1:2

DOC: CADJM.103/R6

inpro.

For More Information Visit: Inprocorp.com



#8 X 2" [M4x50]
SELF-TAPPING SHEET
METAL SCREW (7 PER
FRAME @ 18" [457mm]
O.C.) (JK061)

CONT. ALUM. RECESSED FRAME
(J2A015)
CONT. SANTOPRENE SEAL
3/8" [10mm] DRYWALL (BY OTHERS)
CONT. ALUM. RECESSED
HALF PLATE (J2C017)

SPECIFY SEAL COLOR:	
Black (J1D201)	
Beige (J1D202)	
Gray (J1D203)	
Off White (J1D204)	
Bright White (J1D205)	
Greige (J1D206)	

223-A09-100

JOINT WIDTH		MOVEMENT ±			
		HORIZONTAL		VERTICAL	
US	mm	US	mm	US	mm
4"	102	1"	25	1"	25

NOTE:
TO DETERMINE BLOCKOUT DEPTH,
DEDUCT THICKNESS OF FLOOR FINISH
FROM FRAME HEIGHT.
LOW PROFILE OPTIONS AVAILABLE

FINISH: ALUM. FINISH-MILL

PROJECT:

CUSTOMER:

LOCATION:

APPLICATION
RECESSED FLOOR/WALL CONDITION
RECESSED PLATE FOR 3/8" FLOORING

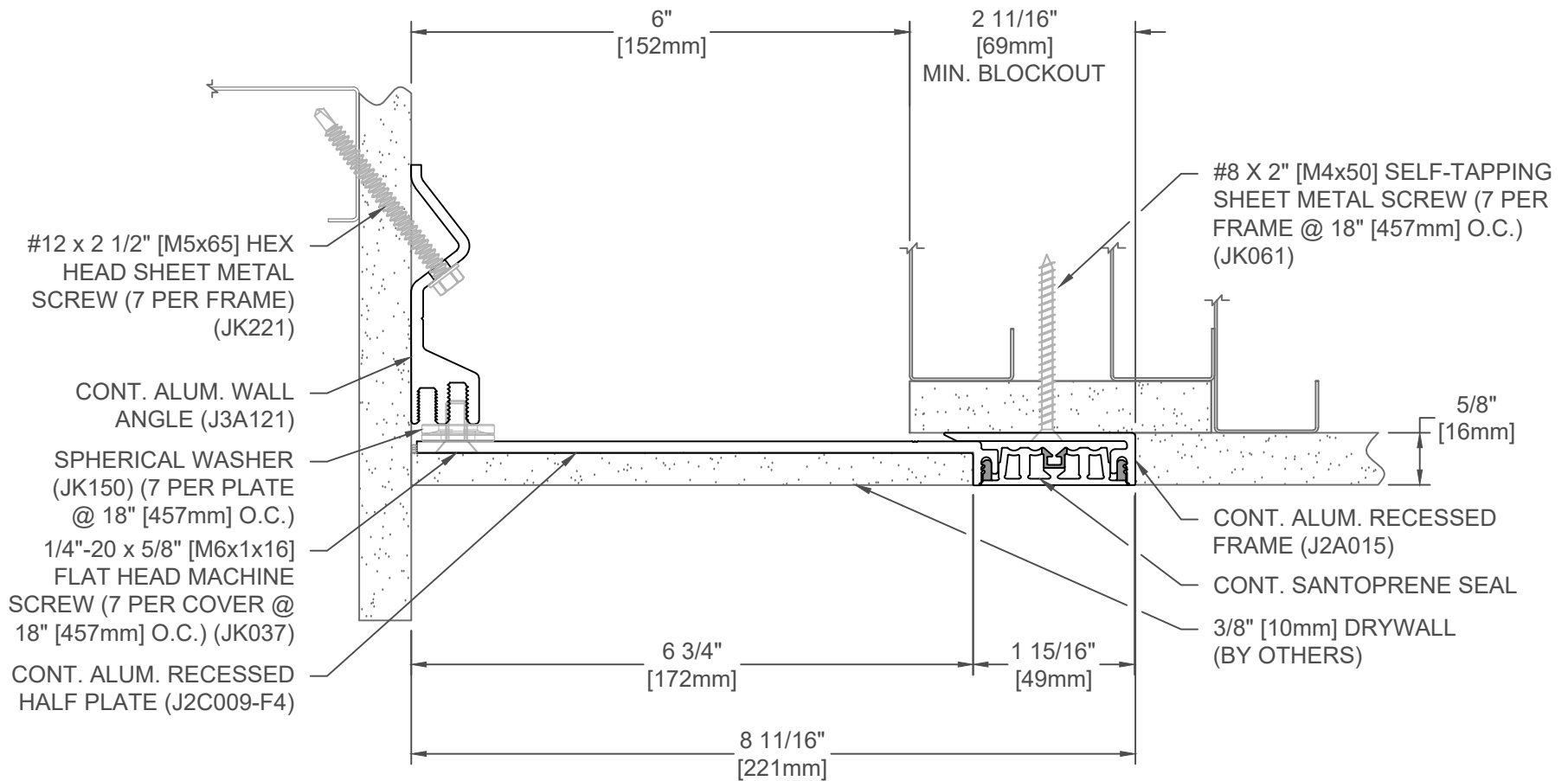
DATE: 03-08-2017

SCALE: 1:2

DOC: CADJM.103/R6

inpro.

For More Information Visit: Inprocorp.com



SPECIFY SEAL COLOR:	
Black (J1D201)	
Beige (J1D202)	
Gray (J1D203)	
Off White (J1D204)	
Bright White (J1D205)	
Greige (J1D206)	

223-A09-150

JOINT WIDTH		MOVEMENT ±			
		HORIZONTAL		VERTICAL	
US	mm	US	mm	US	mm
6"	152	1 1/2"	38	1 1/2"	38

NOTE:
TO DETERMINE BLOCKOUT DEPTH,
DEDUCT THICKNESS OF FLOOR FINISH
FROM FRAME HEIGHT.

FINISH: ALUM. FINISH-MILL

PROJECT:

CUSTOMER:

LOCATION:

APPLICATION
RECESSED FLOOR/WALL CONDITION
RECESSED PLATE FOR 3/8" FLOORING

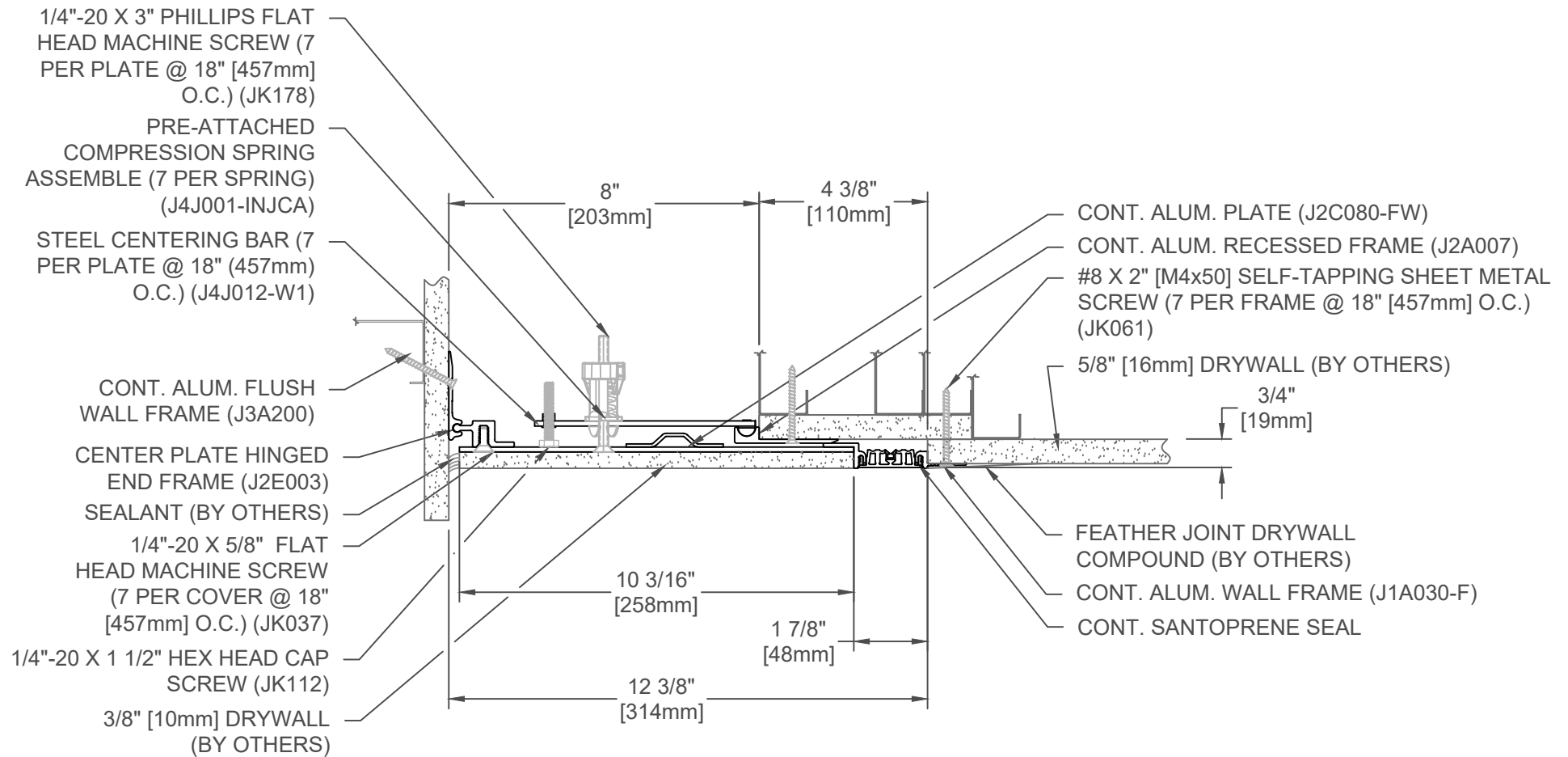
DATE: 03-08-2017

SCALE: 1:2

DOC: CADJM.103/R6

inpro.

For More Information Visit: Inprocorp.com



223-A09-200

SPECIFY SEAL COLOR:	
Black (J1D201)	
Beige (J1D202)	
Gray (J1D203)	
Off White (J1D204)	
Bright White (J1D205)	
Greige (J1D206)	

JOINT WIDTH		MOVEMENT ±			
		HORIZONTAL		VERTICAL	
US	mm	US	mm	US	mm
8"	203	2"	51	1"	25

FINISH: ALUM. FINISH-MILL

PROJECT:

CUSTOMER:

LOCATION:

APPLICATION
WALL/CORNER-WALL/CEILING CONDITION W/ SEAL

DATE: 03-16-17

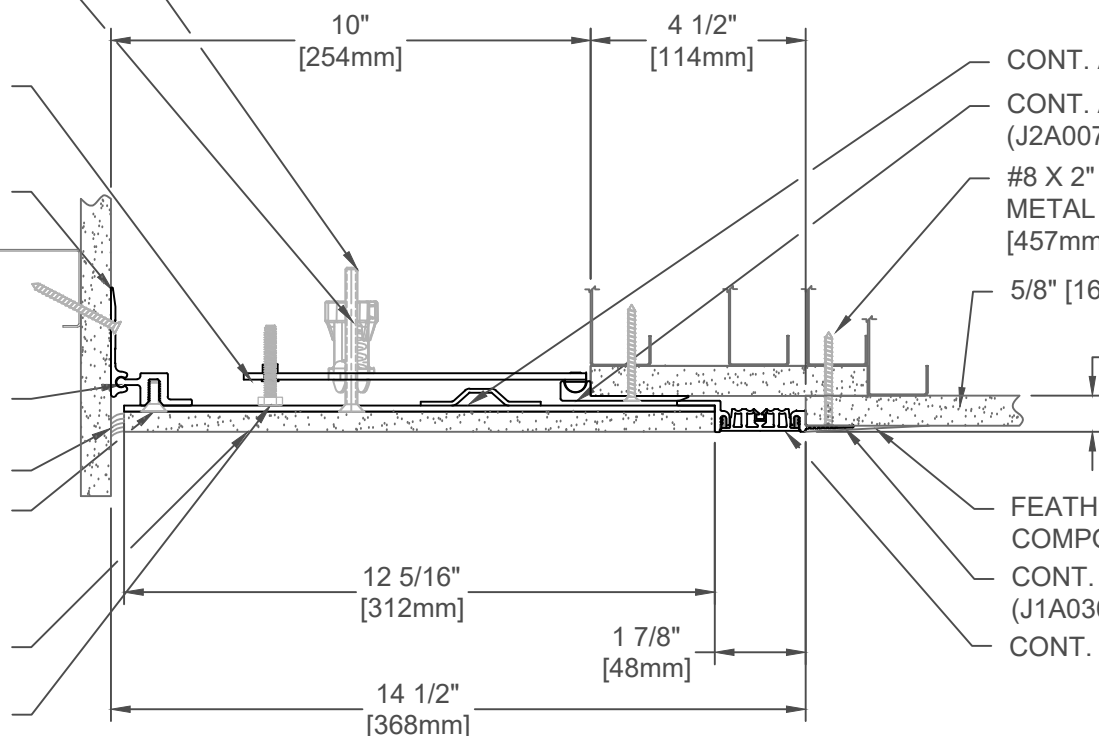
SCALE: 1:4

DOC: CADJM.103/R6

inpro.

For More Information Visit: Inprocorp.com

- 1/4"-20 X 3" PHILLIPS FLAT HEAD MACHINE SCREW (7 PER PLATE @ 18" [457mm] O.C.) (JK178)
- PRE-ATTACHED COMPRESSION SPRING ASSEMBLY (7 PER SPRING) (J4J001-INJCA)
- STEEL CENTERING BAR (7 PER PLATE @ 18" (457mm) O.C.) (J4J018-W1)
- CONT. ALUM. FLUSH WALL FRAME (J3A200)
- CENTER PLATE HINGED END FRAME (J2E003)
- SEALANT (BY OTHERS)
- 1/4"-20 X 5/8" FLAT HEAD MACHINE SCREW (7 PER COVER @ 18" [457mm] O.C.) (JK037)
- 3/8" [10mm] DRYWALL (BY OTHERS)
- 1/4"-20 X 1 1/2" HEX HEAD CAP SCREW (JK112)



- CONT. ALUM. PLATE (J2C081-FW)
- CONT. ALUM. RECESSED FRAME (J2A007)
- #8 X 2" [M4x50] SELF-TAPPING SHEET METAL SCREW (7 PER FRAME @ 18" [457mm] O.C.) (JK061)
- 5/8" [16mm] DRYWALL (BY OTHERS)
- FEATHER JOINT DRYWALL COMPOUND (BY OTHERS)
- CONT. ALUM. WALL FRAME (J1A030-F)
- CONT. SANTOPRENE SEAL

SPECIFY SEAL COLOR:	
Black (J1D201)	
Beige (J1D202)	
Gray (J1D203)	
Off White (J1D204)	
Bright White (J1D205)	
Greige (J1D206)	

223-A09-250

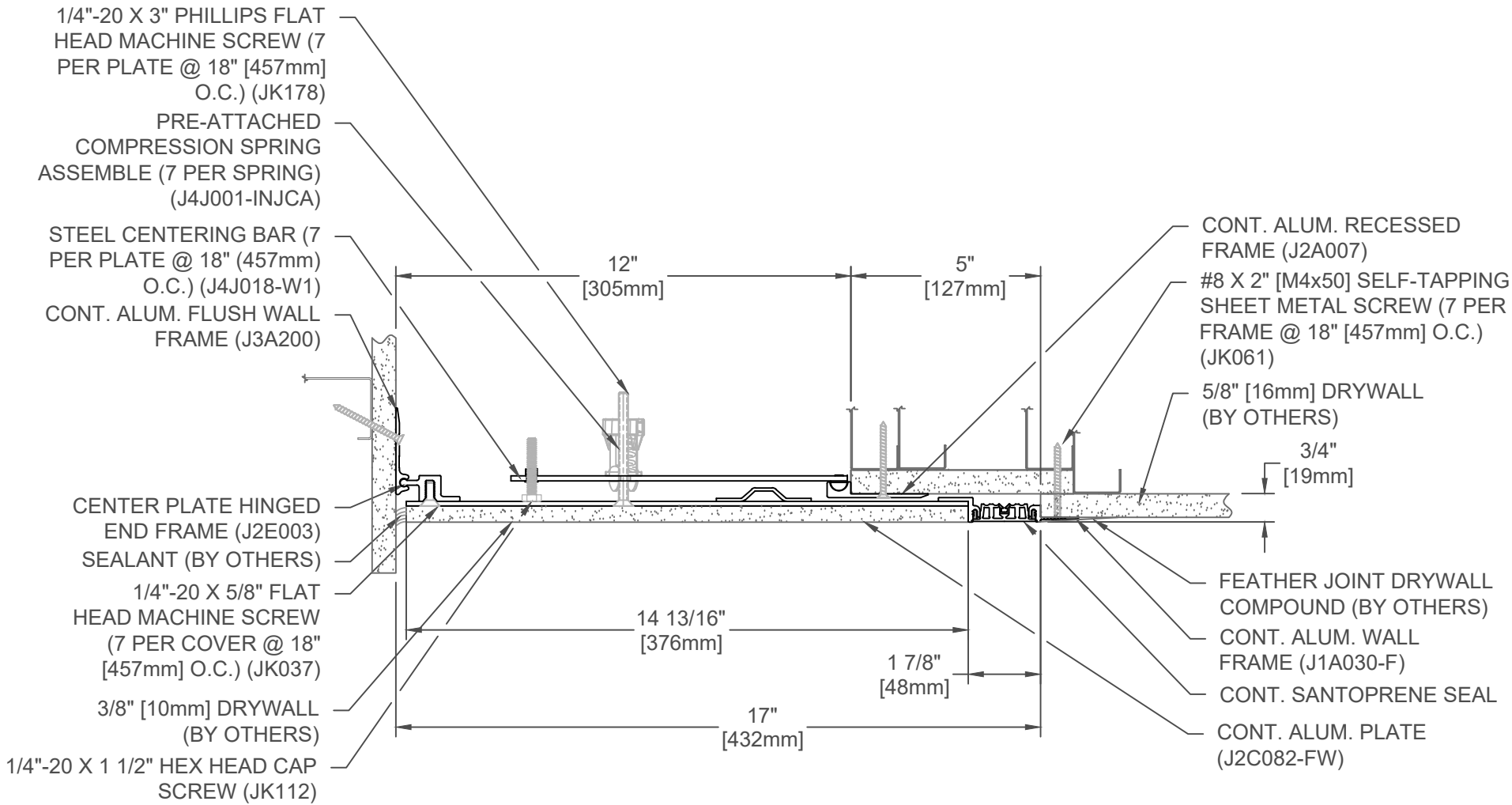
JOINT WIDTH		MOVEMENT ±			
		HORIZONTAL		VERTICAL	
US	mm	US	mm	US	mm
10"	254	2-1/2"	64	1 1/4"	32

FINISH: ALUM. FINISH-MILL	
PROJECT:	
CUSTOMER:	
LOCATION:	

APPLICATION
WALL/CORNER-WALL/CEILING CONDITION W/ SEAL

DATE:	03-16-17
SCALE:	1:4
DOC:	CADJM.103/R6





- 1/4"-20 X 3" PHILLIPS FLAT HEAD MACHINE SCREW (7 PER PLATE @ 18" [457mm] O.C.) (JK178)
- PRE-ATTACHED COMPRESSION SPRING ASSEMBLY (7 PER SPRING) (J4J001-INJCA)
- STEEL CENTERING BAR (7 PER PLATE @ 18" (457mm) O.C.) (J4J018-W1)
- CONT. ALUM. FLUSH WALL FRAME (J3A200)
- CENTER PLATE HINGED END FRAME (J2E003)
- SEALANT (BY OTHERS)
- 1/4"-20 X 5/8" FLAT HEAD MACHINE SCREW (7 PER COVER @ 18" [457mm] O.C.) (JK037)
- 3/8" [10mm] DRYWALL (BY OTHERS)
- 1/4"-20 X 1 1/2" HEX HEAD CAP SCREW (JK112)

- CONT. ALUM. RECESSED FRAME (J2A007)
- #8 X 2" [M4x50] SELF-TAPPING SHEET METAL SCREW (7 PER FRAME @ 18" [457mm] O.C.) (JK061)
- 5/8" [16mm] DRYWALL (BY OTHERS)
- 3/4" [19mm]
- FEATHER JOINT DRYWALL COMPOUND (BY OTHERS)
- CONT. ALUM. WALL FRAME (J1A030-F)
- CONT. SANTOPRENE SEAL
- CONT. ALUM. PLATE (J2C082-FW)

223-A09-300

JOINT WIDTH		MOVEMENT ±			
		HORIZONTAL		VERTICAL	
US	mm	US	mm	US	mm
12"	305	3"	76	1 1/2"	38

SPECIFY SEAL COLOR:	
Black (J1D201)	
Beige (J1D202)	
Gray (J1D203)	
Off White (J1D204)	
Bright White (J1D205)	
Greige (J1D206)	

FINISH: ALUM. FINISH-MILL
PROJECT:
CUSTOMER:
LOCATION:

APPLICATION
WALL/CORNER-WALL/CEILING CONDITION W/ SEAL

DATE:	03-16-17
SCALE:	1:4
DOC:	CADJM.103/R6



1/4"-20 X 3" PHILLIPS FLAT HEAD MACHINE SCREW (7 PER PLATE @ 18" [457mm] O.C.) (JK178)

STEEL CENTERING BAR (7 PER PLATE @ 18" (457mm) O.C.) (J4J024-FW1)

PRE-ATTACHED COMPRESSION SPRING ASSEMBLY (7 PER SPRING) (J4J001-INJCA)

CONT. ALUM. RECESSED FRAME (J2A007)

CONT. ALUM. FLUSH WALL FRAME (J3A200)

#8 X 2" [M4x50] SELF-TAPPING SHEET METAL SCREW (7 PER FRAME @ 18" [457mm] O.C.) (JK061)

CENTER PLATE HINGED END FRAME (J2E003)
SEALANT (BY OTHERS)

1/4"-20 X 5/8" FLAT HEAD MACHINE SCREW (7 PER COVER @ 18" [457mm] O.C.) (JK037)

3/8" [10mm] DRYWALL (BY OTHERS)

1/4"-20 X 1 1/2" HEX HEAD CAP SCREW (JK112)

5/8" [16mm] DRYWALL (BY OTHERS)

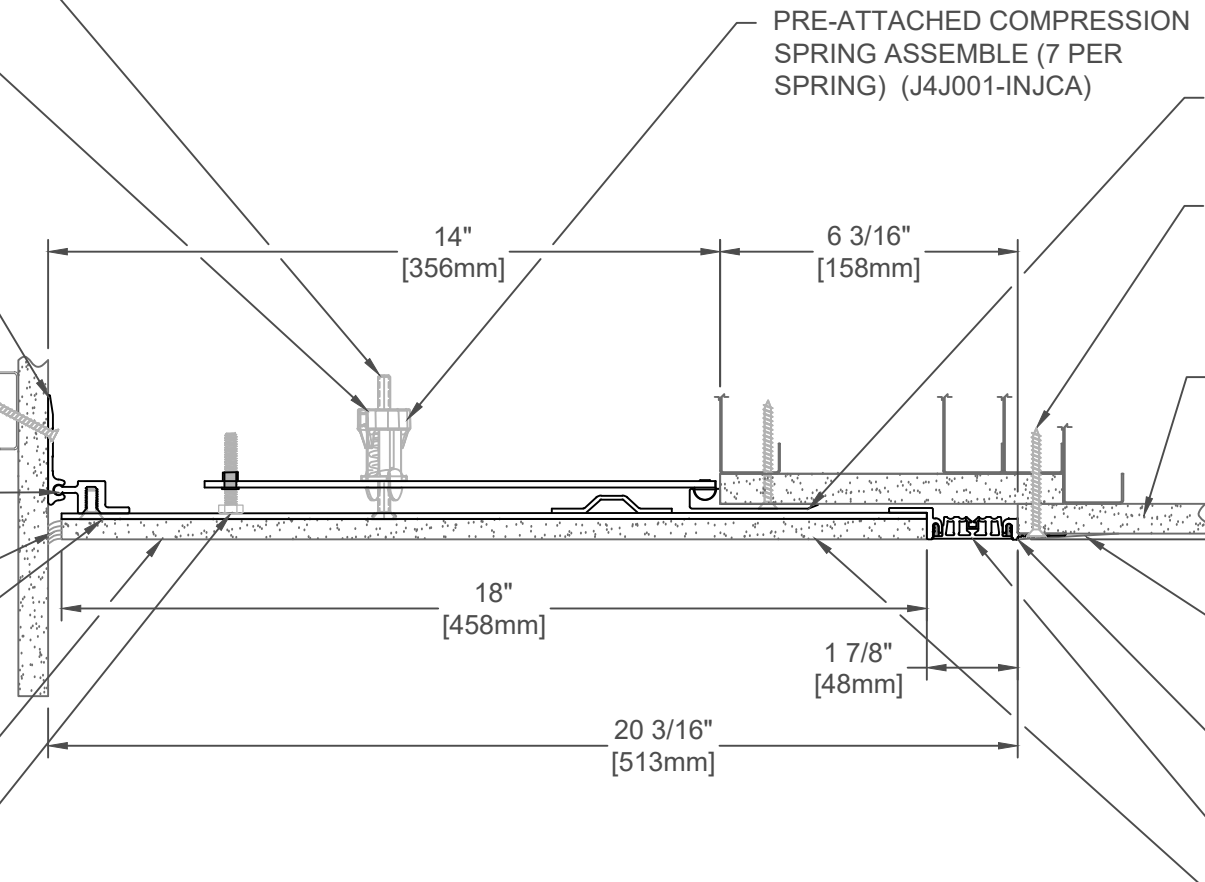
3/4" [19mm]

FEATHER JOINT DRYWALL COMPOUND (BY OTHERS)

CONT. ALUM. WALL FRAME (J1A030-F)

CONT. SANTOPRENE SEAL

CONT. ALUM. PLATE (J2C083-FW)



223-A09-350

JOINT WIDTH		MOVEMENT ±			
		HORIZONTAL		VERTICAL	
US	mm	US	mm	US	mm
14"	356	3 1/2"	89	2 1/4"	57

NOTE:
TO DETERMINE BLOCKOUT DEPTH,
DEDUCT THICKNESS OF FLOOR
FINISH FROM FRAME HEIGHT.

SPECIFY SEAL COLOR:

Black (J1D201)	
Beige (J1D202)	
Gray (J1D203)	
Off White (J1D204)	
Bright White (J1D205)	
Greige (J1D206)	

FINISH: ALUM. FINISH-CLEAR ANODIZED

PROJECT:

CUSTOMER:

LOCATION:

APPLICATION
RECESSED WALL/WALL-CEILING/CEILING CONDITION
W/DUAL SEALS-FLUSH PLATE

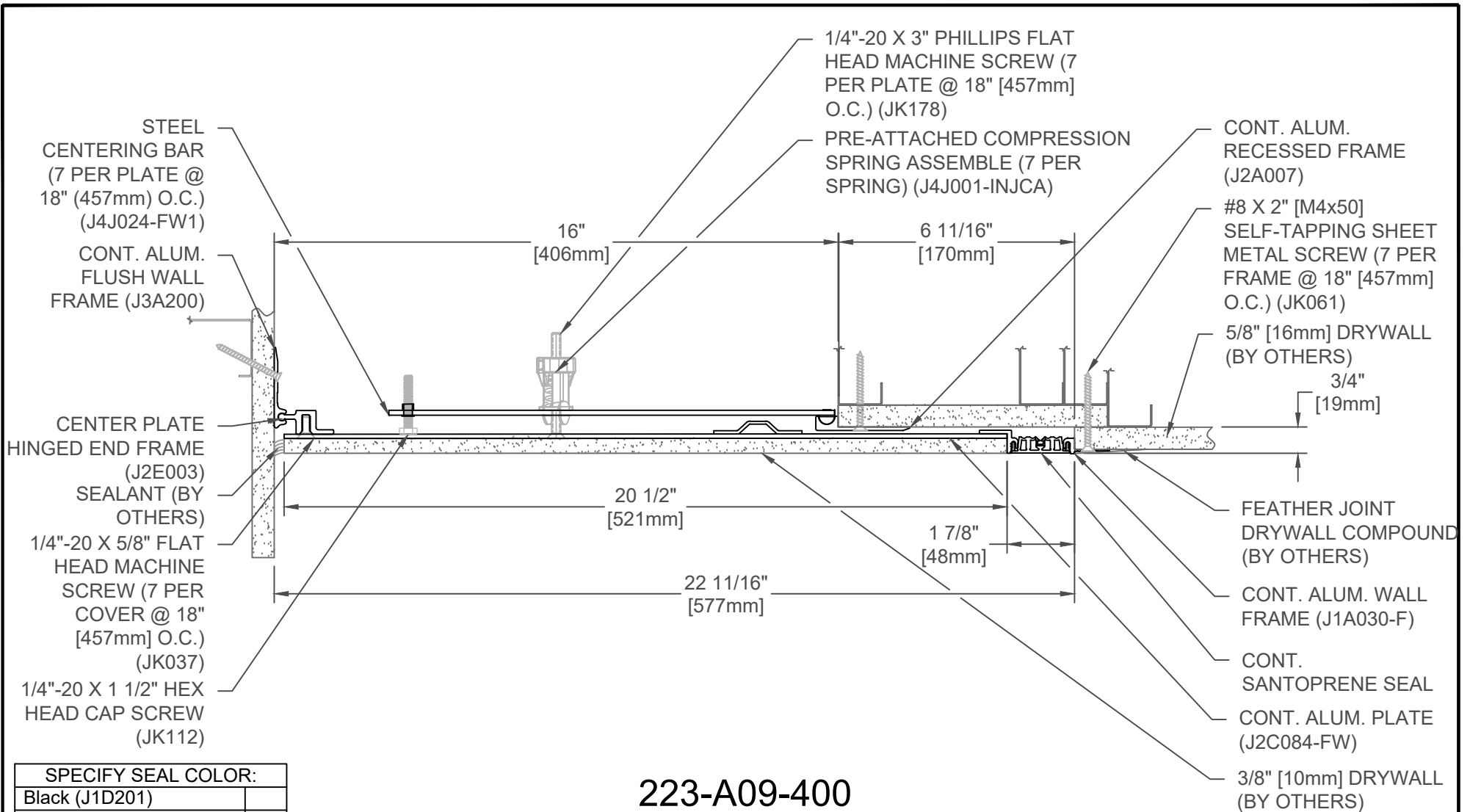
DATE: 03-08-17

SCALE: 1:4

DOC: CADJM.103/R6

inpro.

For More Information Visit: Inprocorp.com



SPECIFY SEAL COLOR:	
Black (J1D201)	
Beige (J1D202)	
Gray (J1D203)	
Off White (J1D204)	
Bright White (J1D205)	
Greige (J1D206)	

223-A09-400

JOINT WIDTH		MOVEMENT ±			
		HORIZONTAL		VERTICAL	
US	mm	US	mm	US	mm
16"	406	4"	102	2 1/4"	57

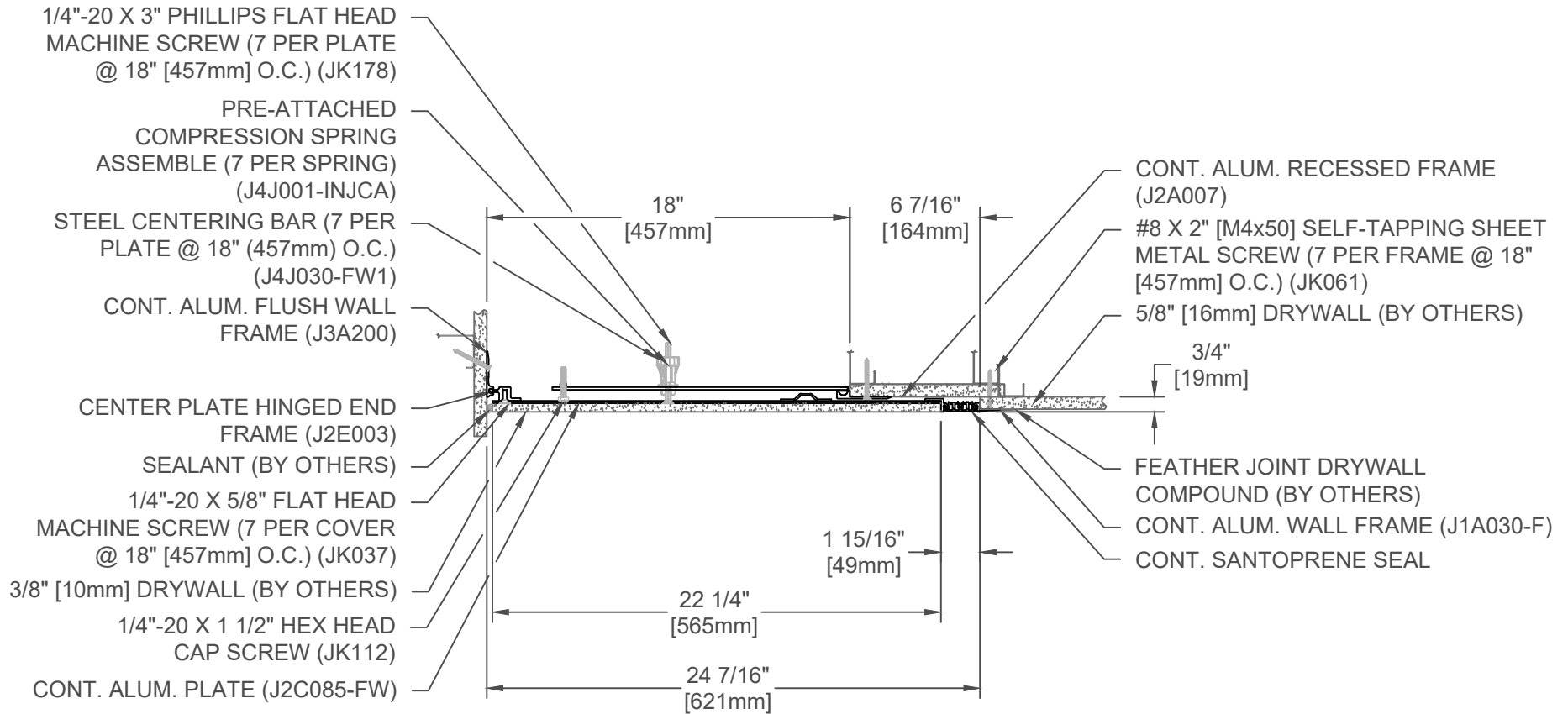
NOTE:
TO DETERMINE BLOCKOUT DEPTH,
DEDUCT THICKNESS OF FLOOR
FINISH FROM FRAME HEIGHT.

FINISH: ALUM. FINISH-CLEAR ANODIZED	
PROJECT:	
CUSTOMER:	
LOCATION:	

APPLICATION
RECESSED WALL/WALL-CEILING/CEILING CONDITION
W/DUAL SEALS-FLUSH PLATE

DATE:	03-08-17
SCALE:	1:4
DOC:	CADJM.103/R6





223-A09-450

SPECIFY SEAL COLOR:	
Black (J1D201)	
Beige (J1D202)	
Gray (J1D203)	
Off White (J1D204)	
Bright White (J1D205)	
Greige (J1D206)	

JOINT WIDTH		MOVEMENT ±			
		HORIZONTAL		VERTICAL	
US	mm	US	mm	US	mm
18"	457	4-1/2"	114	2 1/4"	57

FINISH: ALUM. FINISH-MILL

PROJECT:

CUSTOMER:

LOCATION:

APPLICATION
WALL/CORNER-WALL/CEILING CONDITION W/ SEAL

DATE: 03-16-17

SCALE: 1:5

DOC: CADJM.103/R6

inpro.

For More Information Visit: Inprocorp.com