

221-A09-050

SPECIFY SEAL COLOR:	
Black (J1D101)	
Beige (J1D102)	
Gray (J1D103)	
Off White (J1D104)	
Bright White (J1D105)	
Greige (J1D106)	

JOINT WIDTH		MOVEMENT ±			
		HORIZONTAL		VERTICAL	
US	mm	US	mm	US	mm
2"	51	1/2"	13	1/4"	6

FINISH: ALUM. FINISH-CLEAR ANODIZED

PROJECT:

CUSTOMER:

LOCATION:

APPLICATION
WALL/CORNER-WALL/CEILING CONDITION
FLUSH PLATE

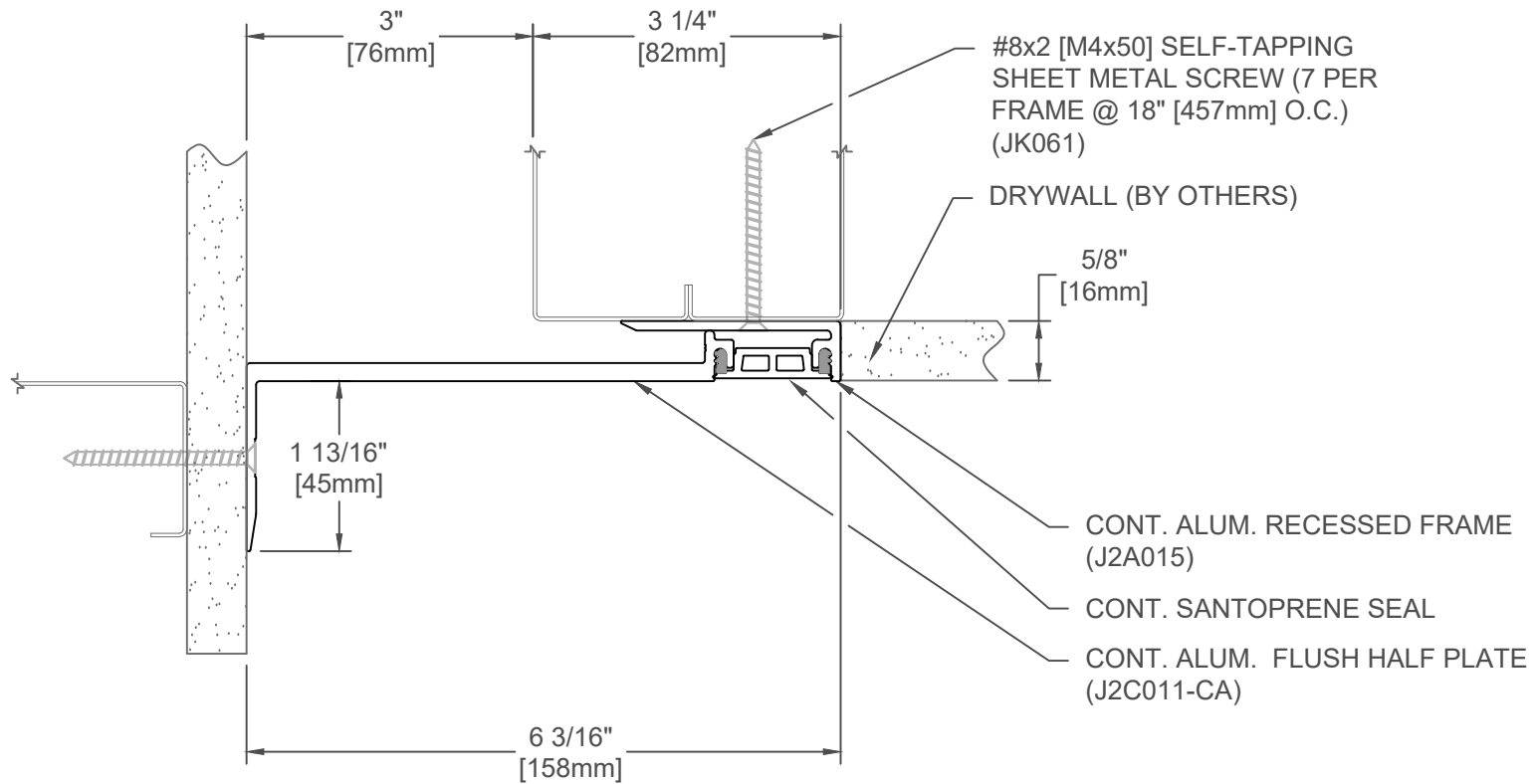
DATE: 03-08-17

SCALE: 1:2

DOC: CADJM.150/R7

inpro.

For More Information Visit: Inprocorp.com



SPECIFY SEAL COLOR:	
Black (J1D151)	
Beige (J1D152)	
Gray (J1D153)	
Off White (J1D154)	
Bright White (J1D155)	
Greige (J1D156)	

221-A09-075

JOINT WIDTH		MOVEMENT ±			
		HORIZONTAL		VERTICAL	
US	mm	US	mm	US	mm
3"	76	3/4"	19	3/8"	10

FINISH: ALUM. FINISH-CLEAR ANODIZED

PROJECT:

CUSTOMER:

LOCATION:

APPLICATION
WALL/CORNER-WALL/CEILING CONDITION
FLUSH PLATE

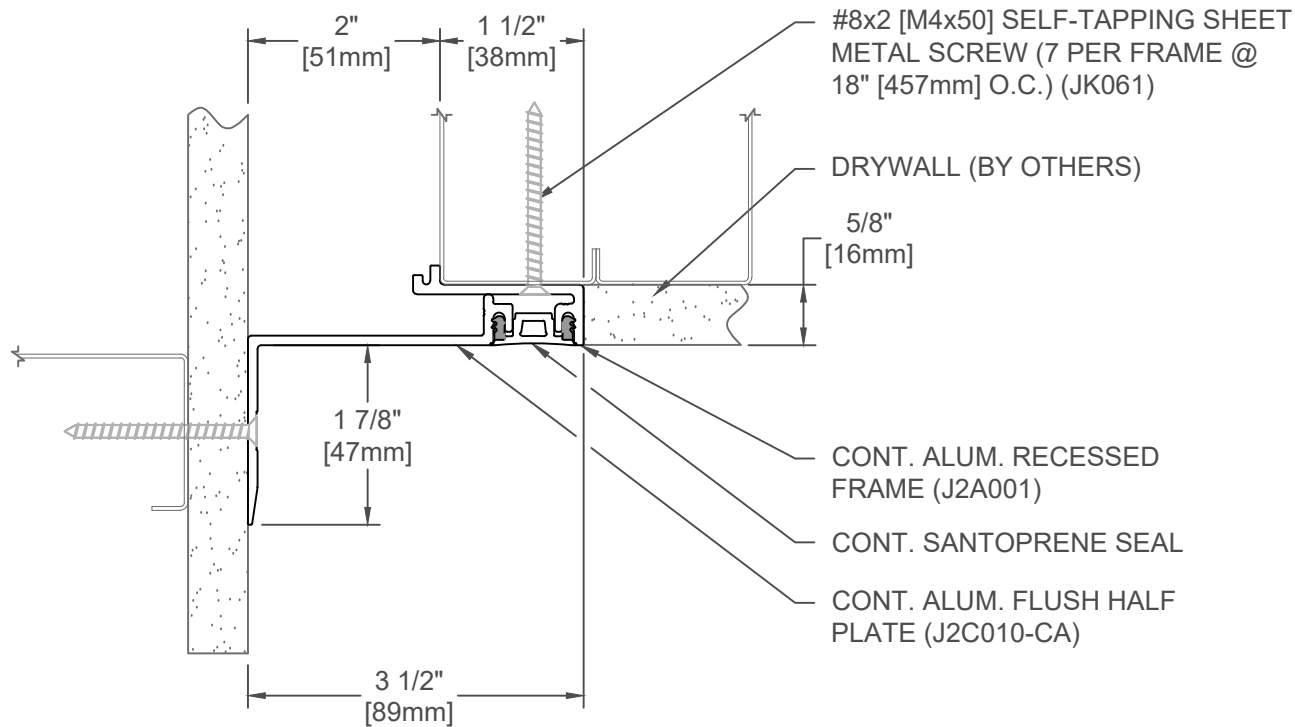
DATE: 03-08-17

SCALE: 1:2

DOC: CADJM.150/R7

inpro.

For More Information Visit: Inprocorp.com



221-A09-050

SPECIFY SEAL COLOR:	
Black (J1D101)	
Beige (J1D102)	
Gray (J1D103)	
Off White (J1D104)	
Bright White (J1D105)	
Greige (J1D106)	

JOINT WIDTH		MOVEMENT ±			
		HORIZONTAL		VERTICAL	
US	mm	US	mm	US	mm
2"	51	1/2"	13	1/4"	6

FINISH: ALUM. FINISH-CLEAR ANODIZED

PROJECT:

CUSTOMER:

LOCATION:

APPLICATION
WALL/CORNER-WALL/CEILING CONDITION
FLUSH PLATE

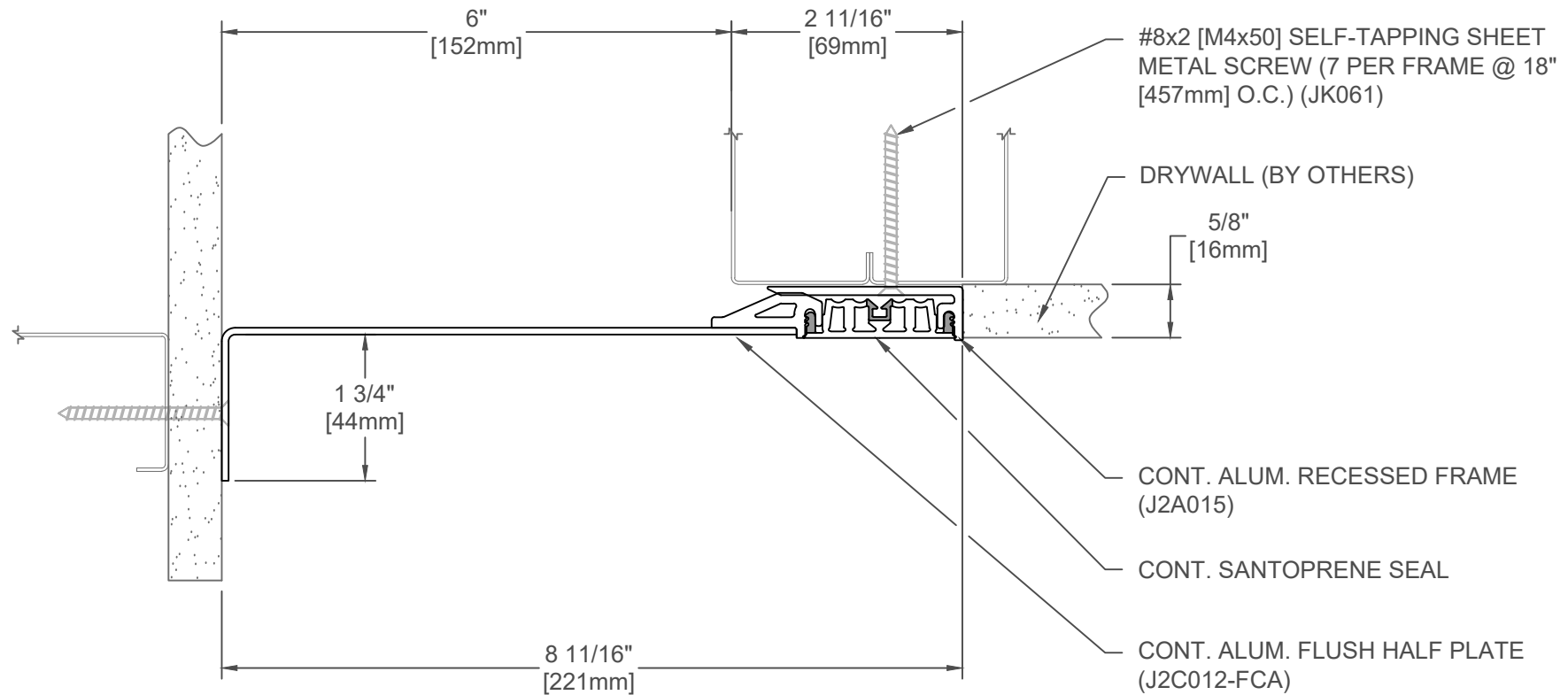
DATE: 03-08-17

SCALE: 1:2

DOC: CADJM.150/R7

inpro.

For More Information Visit: Inprocorp.com



SPECIFY SEAL COLOR:	
Black (J1D201)	
Beige (J1D202)	
Gray (J1D203)	
Off White (J1D204)	
Bright White (J1D205)	
Greige (J1D206)	

221-A09-150

JOINT WIDTH		MOVEMENT ±			
		HORIZONTAL		VERTICAL	
US	mm	US	mm	US	mm
6"	152	1 1/2"	38	3/4"	19

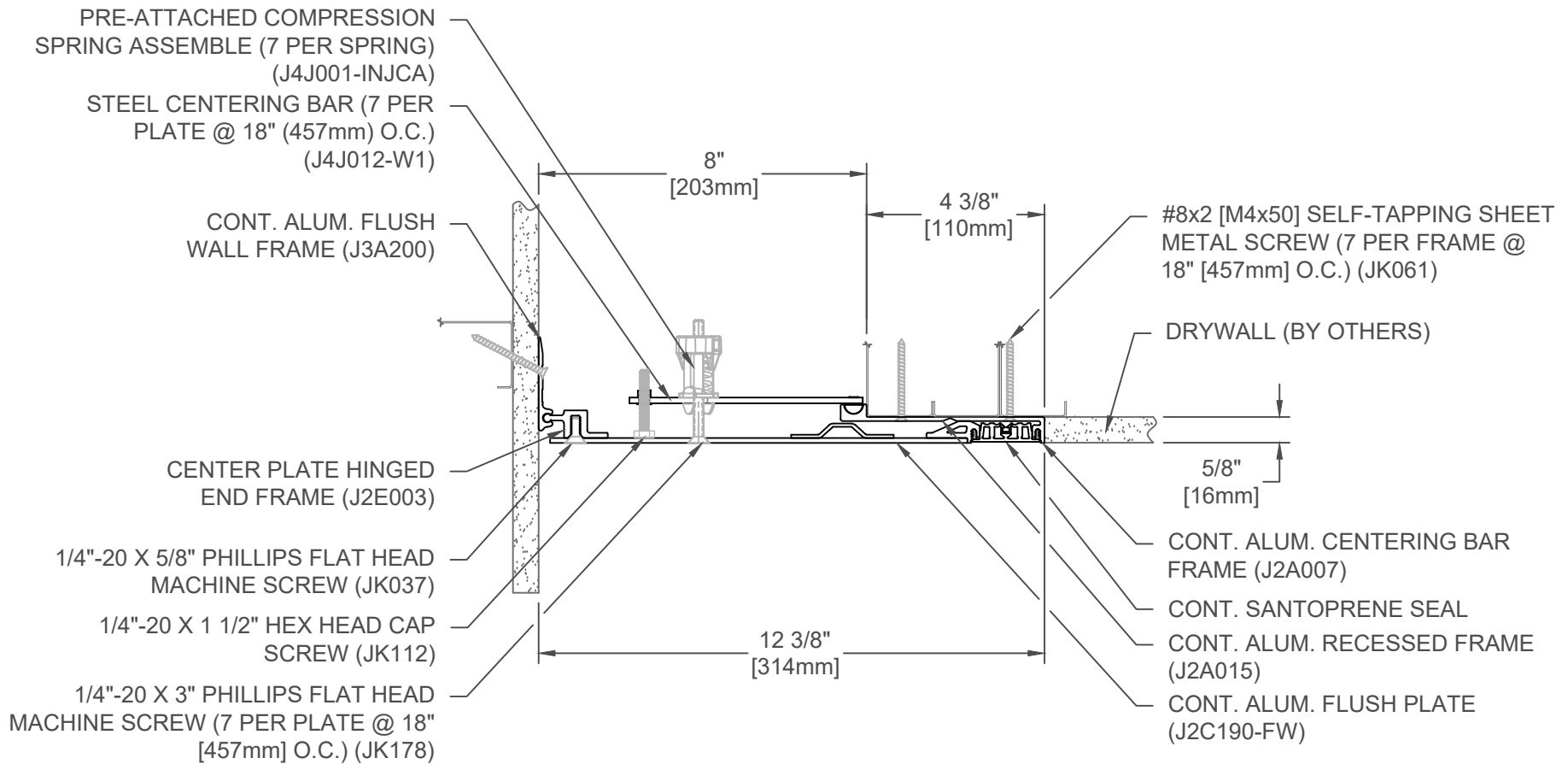
FINISH: ALUM. FINISH-CLEAR ANODIZED
PROJECT:
CUSTOMER:
LOCATION:

APPLICATION
WALL/CORNER-WALL/CEILING CONDITION
FLUSH PLATE

DATE:	03-08-17
SCALE:	1:2
DOC:	CADJM.150/R7



For More Information Visit: Inprocorp.com



SPECIFY SEAL COLOR:	
Black (J1D201)	
Beige (J1D202)	
Gray (J1D203)	
Off White (J1D204)	
Bright White (J1D205)	
Greige (J1D206)	

221-A09-200

JOINT WIDTH		MOVEMENT ±			
		HORIZONTAL		VERTICAL	
US	mm	US	mm	US	mm
8"	203	2"	51	1"	25

FINISH: ALUM. FINISH-CLEAR ANODIZED
PROJECT:
CUSTOMER:
LOCATION:

APPLICATION
WALL/CORNER-WALL/CEILING CONDITION
FLUSH PLATE

DATE:	03-08-17
SCALE:	1:4
DOC:	CADJM.150/R7

inpro.

For More Information Visit: Inprocorp.com

PRE-ATTACHED COMPRESSION
SPRING ASSEMBLY (7 PER
SPRING) (J4J001-INJCA)
STEEL CENTERING BAR (7 PER
PLATE @ 18" (457mm) O.C.)
(J4J018-W1)

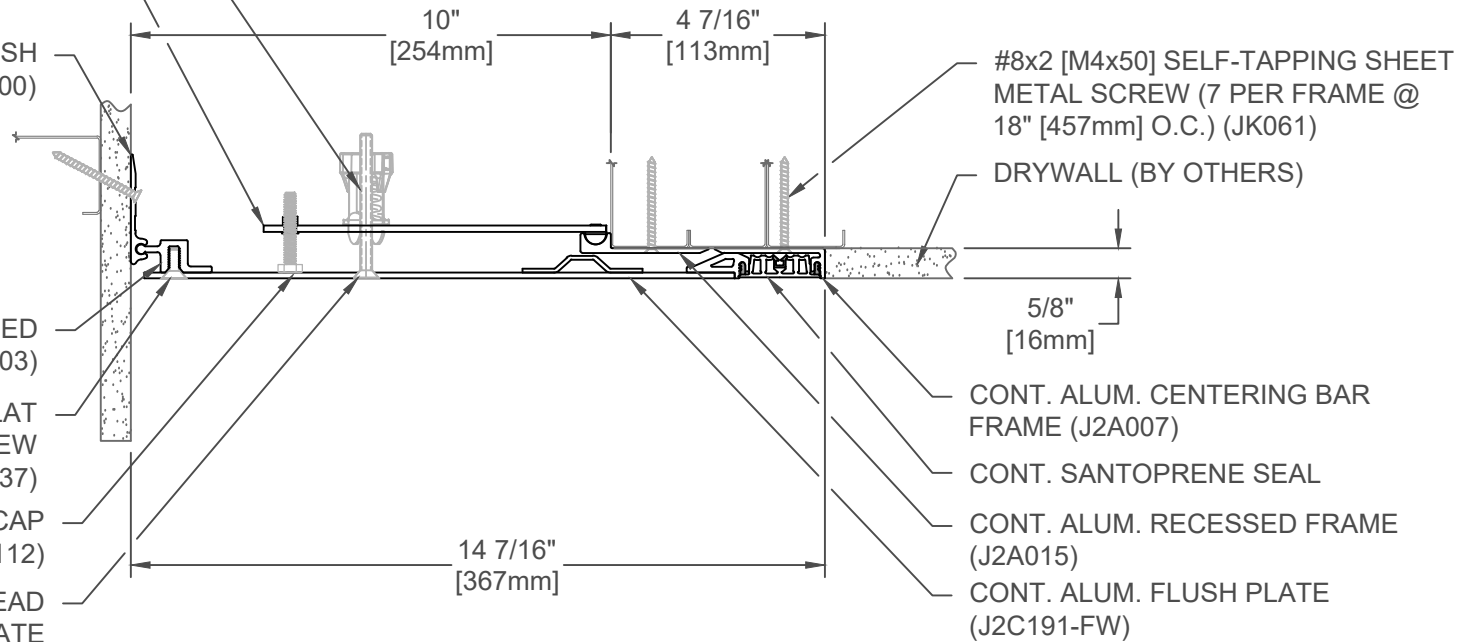
CONT. ALUM. FLUSH
WALL FRAME (J3A200)

CENTER PLATE HINGED
END FRAME (J2E003)

1/4"-20 X 5/8" PHILLIPS FLAT
HEAD MACHINE SCREW
(JK037)

1/4"-20 X 1 1/2" HEX HEAD CAP
SCREW (JK112)

1/4"-20 X 3" PHILLIPS FLAT HEAD
MACHINE SCREW (7 PER PLATE
@ 18" [457mm] O.C.) (JK178)



#8x2 [M4x50] SELF-TAPPING SHEET
METAL SCREW (7 PER FRAME @
18" [457mm] O.C.) (JK061)

DRYWALL (BY OTHERS)

CONT. ALUM. CENTERING BAR
FRAME (J2A007)

CONT. SANTOPRENE SEAL

CONT. ALUM. RECESSED FRAME
(J2A015)

CONT. ALUM. FLUSH PLATE
(J2C191-FW)

SPECIFY SEAL COLOR:	
Black (J1D201)	
Beige (J1D202)	
Gray (J1D203)	
Off White (J1D204)	
Bright White (J1D205)	
Greige (J1D206)	

221-A09-250

JOINT WIDTH		MOVEMENT ±			
		HORIZONTAL		VERTICAL	
US	mm	US	mm	US	mm
10"	254	2-1/2"	64	1 1/4"	32

FINISH: ALUM. FINISH-CLEAR ANODIZED

PROJECT:

CUSTOMER:

LOCATION:

APPLICATION
WALL/CORNER-WALL/CEILING CONDITION
FLUSH PLATE

DATE: 03-08-17

SCALE: 1:4

DOC: CADJM.150/R7

inpro.

For More Information Visit: Inprocorp.com

PRE-ATTACHED
COMPRESSION SPRING
ASSEMBLY (7 PER SPRING)
(J4J001-INJCA)

STEEL CENTERING BAR (7
PER PLATE @ 18" (457mm)
O.C.) (J4J018-W1)

CONT. ALUM. FLUSH
WALL FRAME (J3A200)

CENTER PLATE HINGED
END FRAME (J2E003)

1/4"-20 X 5/8" PHILLIPS FLAT
HEAD MACHINE SCREW
(JK037)

1/4"-20 X 1 1/2" HEX HEAD CAP
SCREW (JK112)

1/4"-20 X 3" PHILLIPS FLAT
HEAD MACHINE SCREW (7
PER PLATE @ 18" [457mm]
O.C.) (JK178)

12"
[305mm]

4 15/16"
[126mm]

16 15/16"
[431mm]

#8x2 [M4x50] SELF-TAPPING
SHEET METAL SCREW (7 PER
FRAME @ 18" [457mm] O.C.)
(JK061)

DRYWALL (BY OTHERS)

5/8"
[16mm]

CONT. ALUM. CENTERING BAR
FRAME (J2A007)

CONT. SANTOPRENE SEAL

CONT. ALUM. RECESSED FRAME
(J2A015)

CONT. ALUM. FLUSH PLATE
(J2C192-FW)

SPECIFY SEAL COLOR:	
Black (J1D201)	
Beige (J1D202)	
Gray (J1D203)	
Off White (J1D204)	
Bright White (J1D205)	
Greige (J1D206)	

221-A09-300

JOINT WIDTH		MOVEMENT ±			
		HORIZONTAL		VERTICAL	
US	mm	US	mm	US	mm
12"	304	3"	76	1 1/2"	38

FINISH: ALUM. FINISH-CLEAR ANODIZED

PROJECT:

CUSTOMER:

LOCATION:

APPLICATION
WALL/CORNER-WALL/CEILING CONDITION
FLUSH PLATE

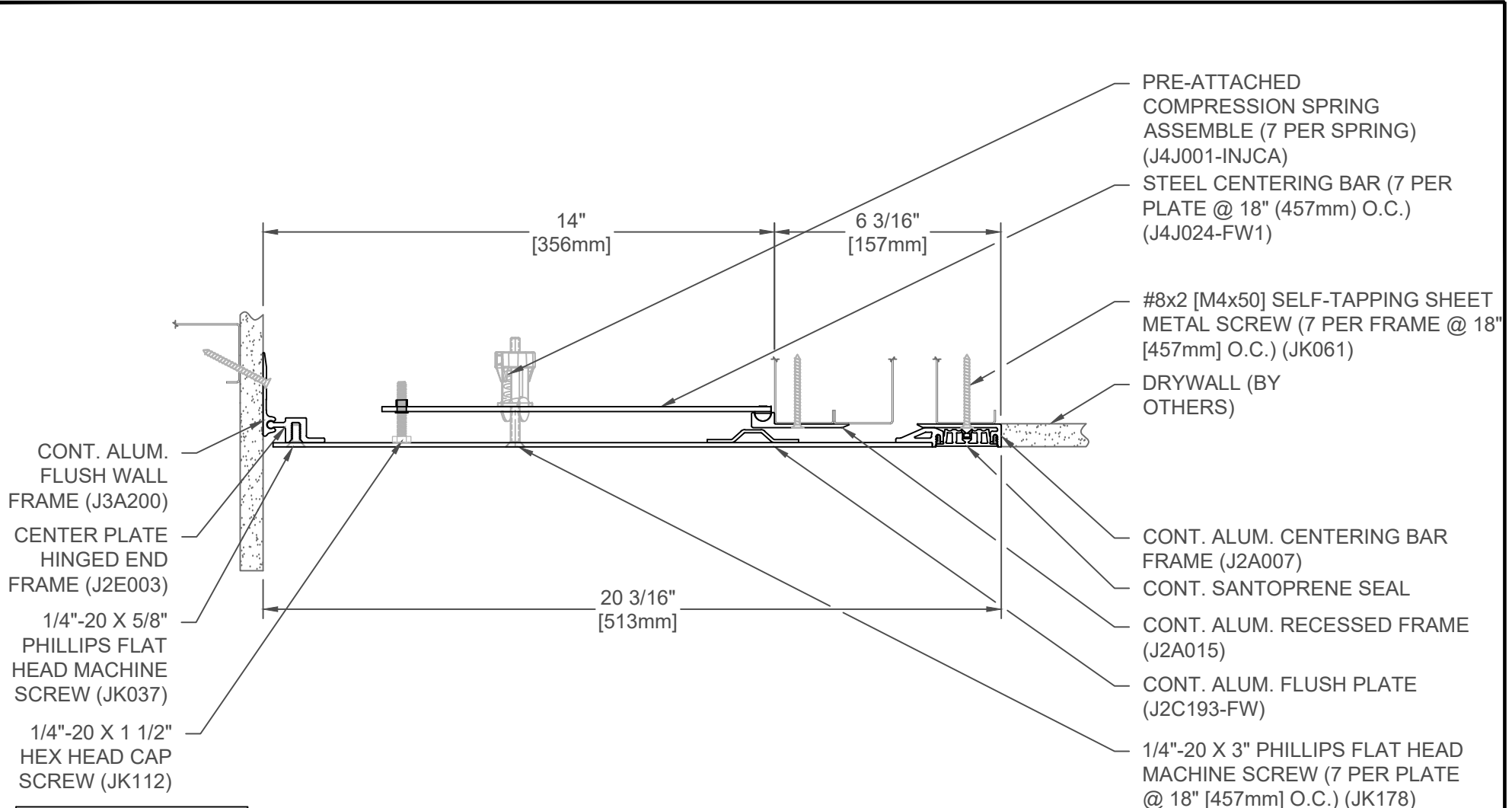
DATE: 03-08-17

SCALE: 1:4

DOC: CADJM.150/R7

inpro.

For More Information Visit: Inprocorp.com



CONT. ALUM. FLUSH WALL FRAME (J3A200)
 CENTER PLATE HINGED END FRAME (J2E003)
 1/4"-20 X 5/8" PHILLIPS FLAT HEAD MACHINE SCREW (JK037)
 1/4"-20 X 1 1/2" HEX HEAD CAP SCREW (JK112)

PRE-ATTACHED COMPRESSION SPRING ASSEMBLY (7 PER SPRING) (J4J001-INJCA)
 STEEL CENTERING BAR (7 PER PLATE @ 18" (457mm) O.C.) (J4J024-FW1)
 #8x2 [M4x50] SELF-TAPPING SHEET METAL SCREW (7 PER FRAME @ 18" [457mm] O.C.) (JK061)
 DRYWALL (BY OTHERS)
 CONT. ALUM. CENTERING BAR FRAME (J2A007)
 CONT. SANTOPRENE SEAL
 CONT. ALUM. RECESSED FRAME (J2A015)
 CONT. ALUM. FLUSH PLATE (J2C193-FW)
 1/4"-20 X 3" PHILLIPS FLAT HEAD MACHINE SCREW (7 PER PLATE @ 18" [457mm] O.C.) (JK178)

221-A09-350

SPECIFY SEAL COLOR:	
Black (J1D201)	
Beige (J1D202)	
Gray (J1D203)	
Off White (J1D204)	
Bright White (J1D205)	
Greige (J1D206)	

JOINT WIDTH		MOVEMENT ±			
		HORIZONTAL		VERTICAL	
US	mm	US	mm	US	mm
14"	356	3 1/2"	89	2 1/4"	57

FINISH: ALUM. FINISH-CLEAR ANODIZED

PROJECT:

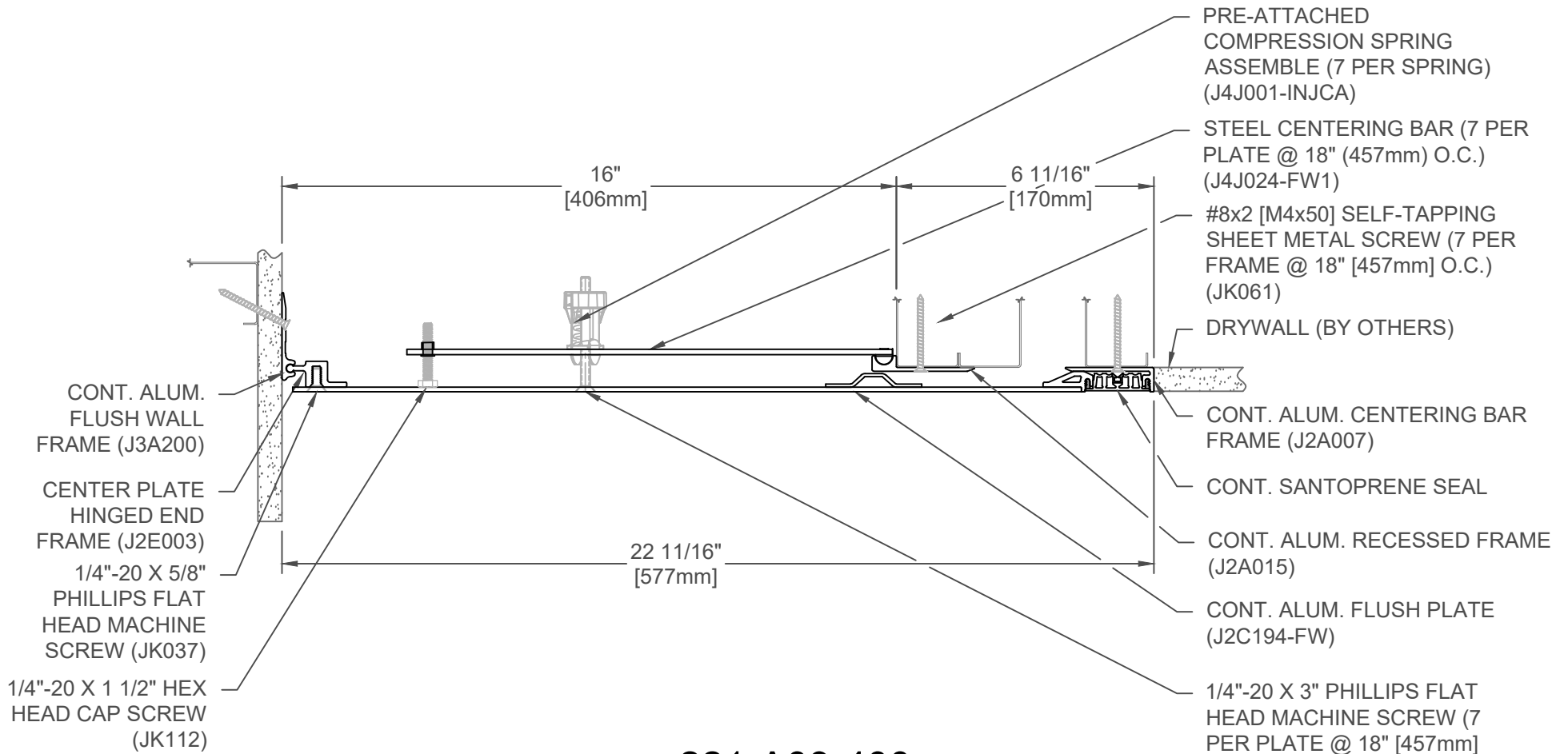
CUSTOMER:

LOCATION:

APPLICATION
 RECESSED WALL/WALL-CEILING/CEILING CONDITION
 W/DUAL SEALS-FLUSH PLATE

DATE: 03-08-17
 SCALE: 1:4
 DOC: CADJM.150/R7





221-A09-400

SPECIFY SEAL COLOR:	
Black (J1D201)	
Beige (J1D202)	
Gray (J1D203)	
Off White (J1D204)	
Bright White (J1D205)	
Greige (J1D206)	

JOINT WIDTH		MOVEMENT ±			
		HORIZONTAL		VERTICAL	
US	mm	US	mm	US	mm
16"	406	4"	102	2 1/4"	57

FINISH: ALUM. FINISH-CLEAR ANODIZED

PROJECT:

CUSTOMER:

LOCATION:

APPLICATION
 RECESSED WALL/WALL-CEILING/CEILING CONDITION
 W/DUAL SEALS-FLUSH PLATE

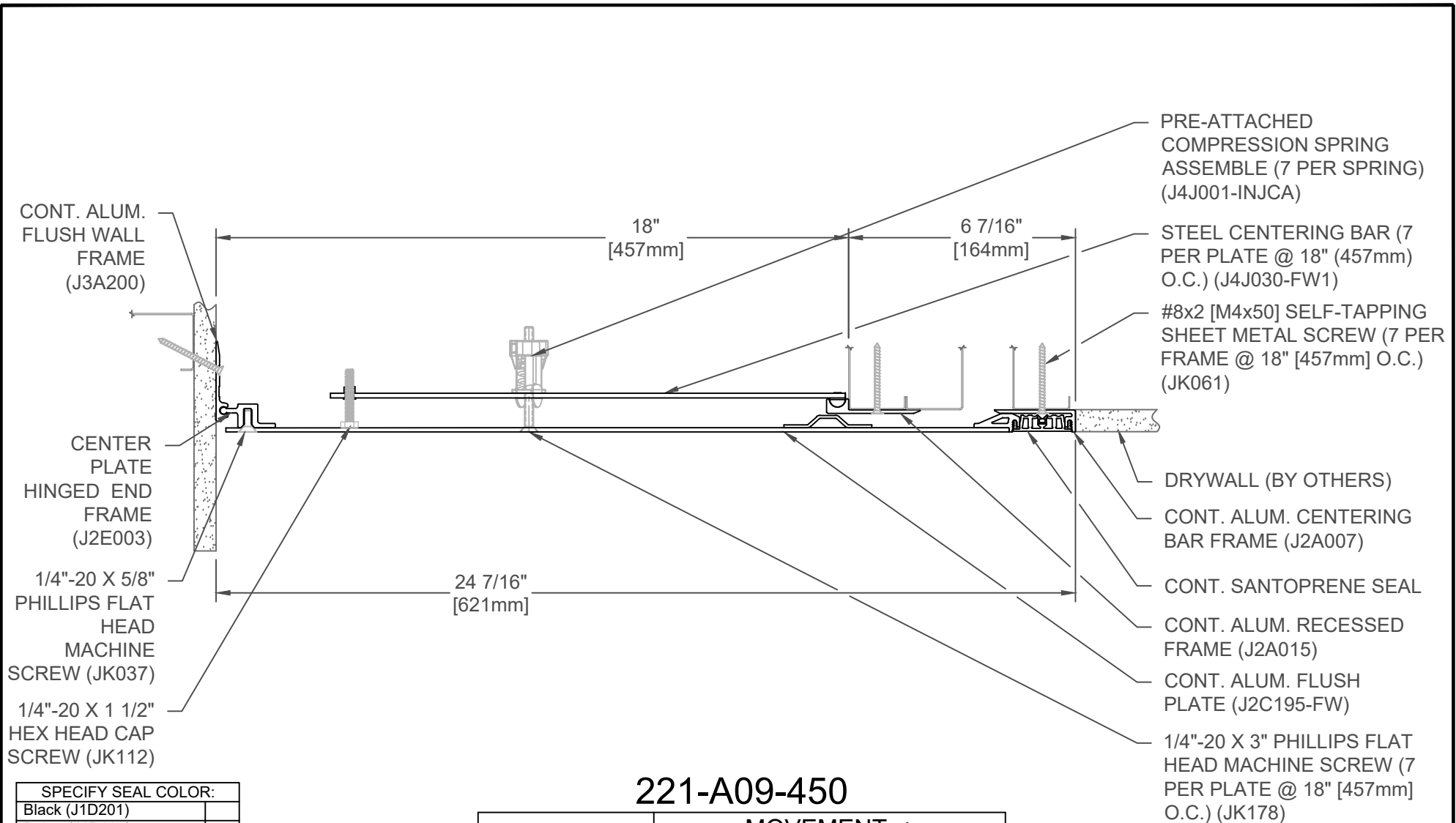
DATE: 03-08-17

SCALE: 1:4

DOC: CADJM.150/R7

inpro.

For More Information Visit: Inprocorp.com



221-A09-450

JOINT WIDTH		MOVEMENT ±			
		HORIZONTAL		VERTICAL	
US	mm	US	mm	US	mm
18"	457	4 1/2"	115	2 1/4"	57

SPECIFY SEAL COLOR:	
Black (J1D201)	
Beige (J1D202)	
Gray (J1D203)	
Off White (J1D204)	
Bright White (J1D205)	
Greige (J1D206)	

FINISH: ALUM. FINISH-CLEAR ANODIZED
PROJECT:
CUSTOMER:
LOCATION:

APPLICATION
 RECESSED WALL/WALL-CEILING/CEILING CONDITION
 W/DUAL SEALS-FLUSH PLATE

DATE:	03-08-17
SCALE:	1:4
DOC:	CADJM.150/R7

For More Information Visit: Inprocorp.com