

221-A07-050

SPECIFY SEAL COLOR:	
Black (J1D101)	
Beige (J1D102)	
Gray (J1D103)	
Off White (J1D104)	
Bright White (J1D105)	
Greige (J1D106)	

JOINT WIDTH		MOVEMENT ±			
		HORIZONTAL		VERTICAL	
US	mm	US	mm	US	mm
2"	51	1"	25	1/2"	13

FINISH: ALUM. FINISH-CLEAR ANODIZED

PROJECT:

CUSTOMER:

LOCATION:

APPLICATION
RECESSED WALL/WALL CONDITION
W/DUAL SEALS-FLUSH PLATE

DATE: 03-08-17

SCALE: 1:2

DOC: CADJM.153/R5

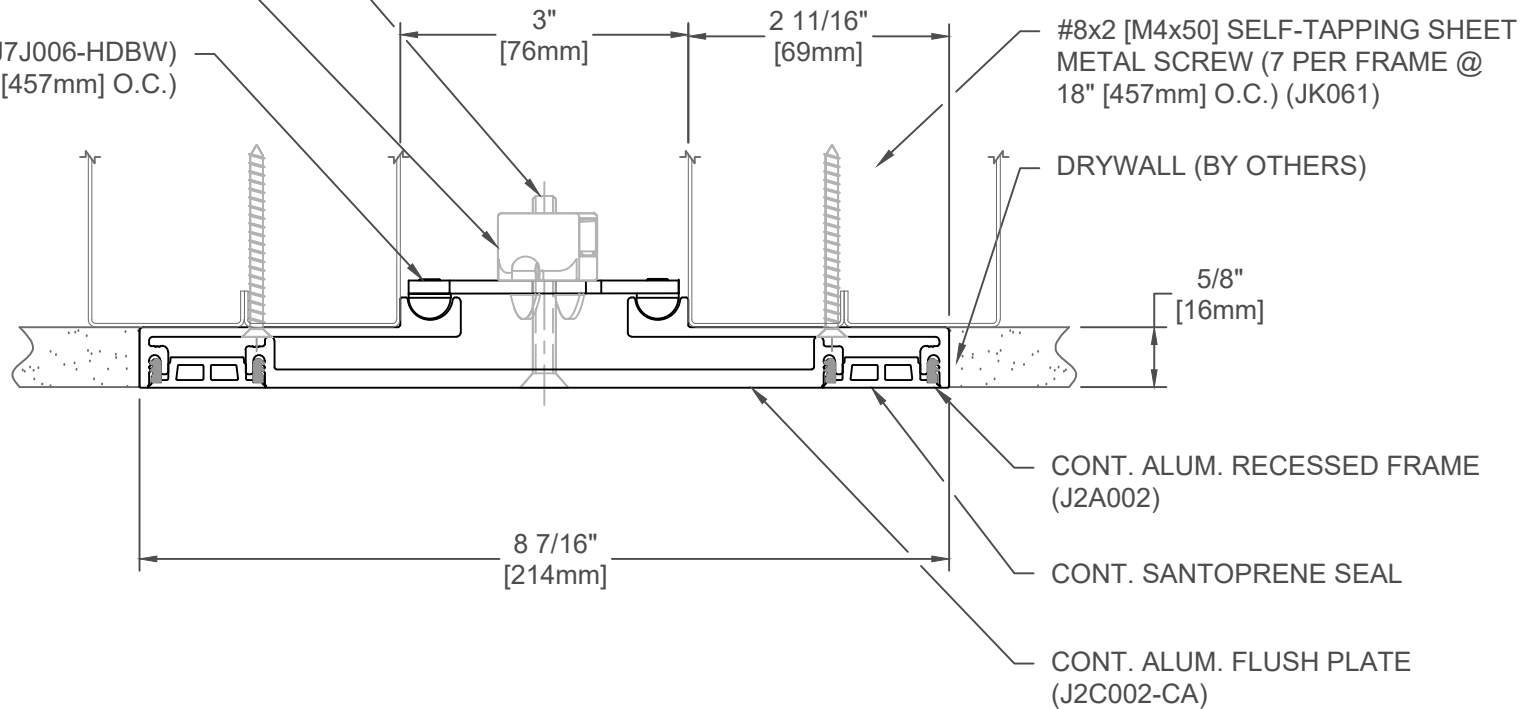
inpro.

For More Information Visit: Inprocorp.com

1/4-20 X 2" PHILLIPS FLAT HEAD
MACHINE SCREW (7 PER PLATE @ 18"
[457mm] O.C.) (JK031)

INJECTION MOLDED CLIP WITH 1/4-20
SQUARE NUT (J4J002-INJRVA)

STEEL CENTERING BAR (J7J006-HDBW)
(7 PER PLATE @ 18" [457mm] O.C.)



#8x2 [M4x50] SELF-TAPPING SHEET
METAL SCREW (7 PER FRAME @
18" [457mm] O.C.) (JK061)

DRYWALL (BY OTHERS)

5/8"
[16mm]

CONT. ALUM. RECESSED FRAME
(J2A002)

CONT. SANTOPRENE SEAL

CONT. ALUM. FLUSH PLATE
(J2C002-CA)

221-A07-075

JOINT WIDTH		MOVEMENT ±			
		HORIZONTAL		VERTICAL	
US	mm	US	mm	US	mm
3"	76	1 1/2"	38	3/4"	19

SPECIFY SEAL COLOR:

Black (J1D151)	
Beige (J1D152)	
Gray (J1D153)	
Off White (J1D154)	
Bright White (J1D155)	
Greige (J1D156)	

FINISH: ALUM. FINISH-CLEAR ANODIZED

PROJECT:

CUSTOMER:

LOCATION:

APPLICATION
RECESSED WALL/WALL CONDITION
W/DUAL SEALS-FLUSH PLATE

DATE: 03-08-17

SCALE: 1:2

DOC: CADJM.153/R5

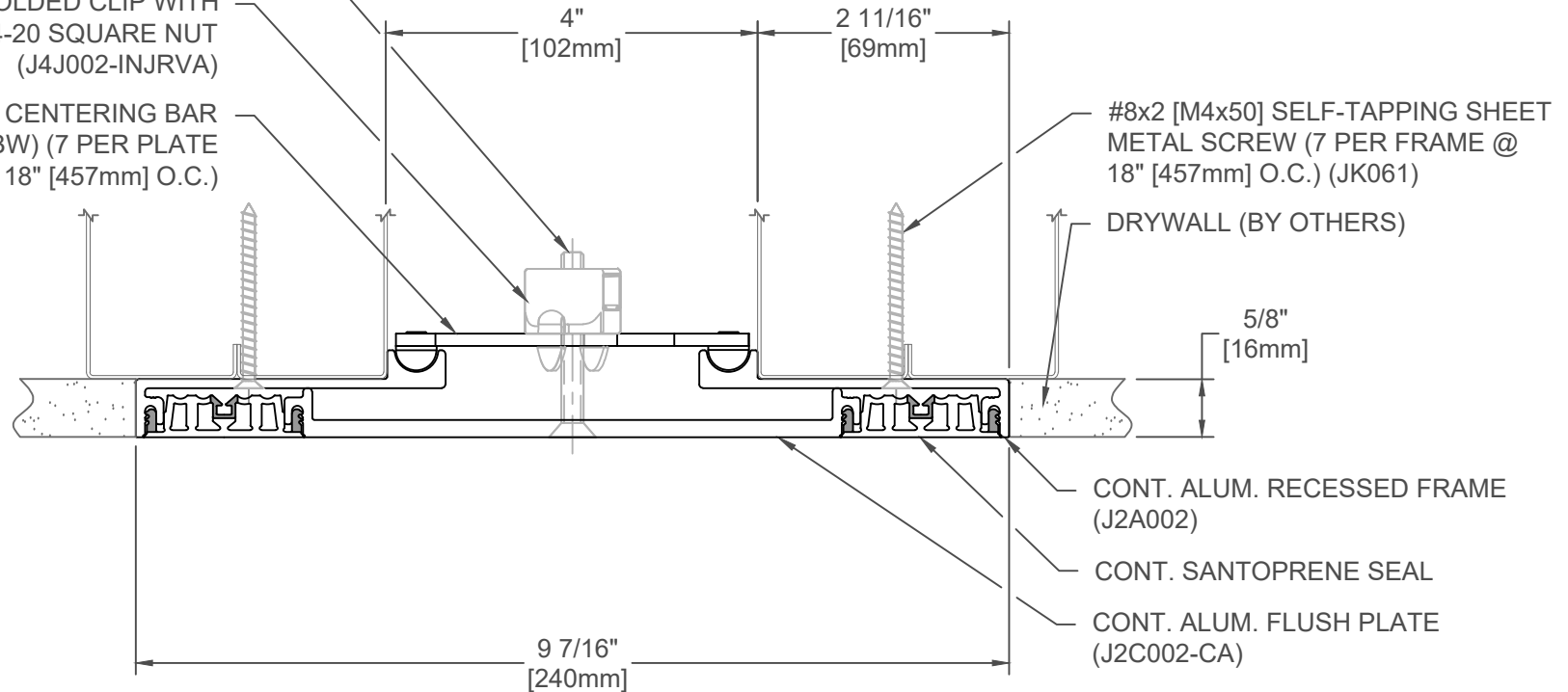
inpro.

For More Information Visit: Inprocorp.com

1/4-20 X 2" PHILLIPS FLAT HEAD
MACHINE SCREW (7 PER PLATE
@ 18" [457mm] O.C.) (JK031)

INJECTION MOLDED CLIP WITH
1/4-20 SQUARE NUT
(J4J002-INJRVA)

STEEL CENTERING BAR
(J7J006-HDBW) (7 PER PLATE
@ 18" [457mm] O.C.)



#8x2 [M4x50] SELF-TAPPING SHEET
METAL SCREW (7 PER FRAME @
18" [457mm] O.C.) (JK061)

DRYWALL (BY OTHERS)

CONT. ALUM. RECESSED FRAME
(J2A002)

CONT. SANTOPRENE SEAL

CONT. ALUM. FLUSH PLATE
(J2C002-CA)

SPECIFY SEAL COLOR:	
Black (J1D201)	
Beige (J1D202)	
Gray (J1D203)	
Off White (J1D204)	
Bright White (J1D205)	
Greige (J1D206)	

221-A07-100

JOINT WIDTH		MOVEMENT ±			
		HORIZONTAL		VERTICAL	
US	mm	US	mm	US	mm
4"	102	2"	51	1"	25

FINISH: ALUM. FINISH-CLEAR ANODIZED

PROJECT:

CUSTOMER:

LOCATION:

APPLICATION
RECESSED WALL/WALL CONDITION
W/DUAL SEALS-FLUSH PLATE

DATE: 03-08-17

SCALE: 1:2

DOC: CADJM.153/R5

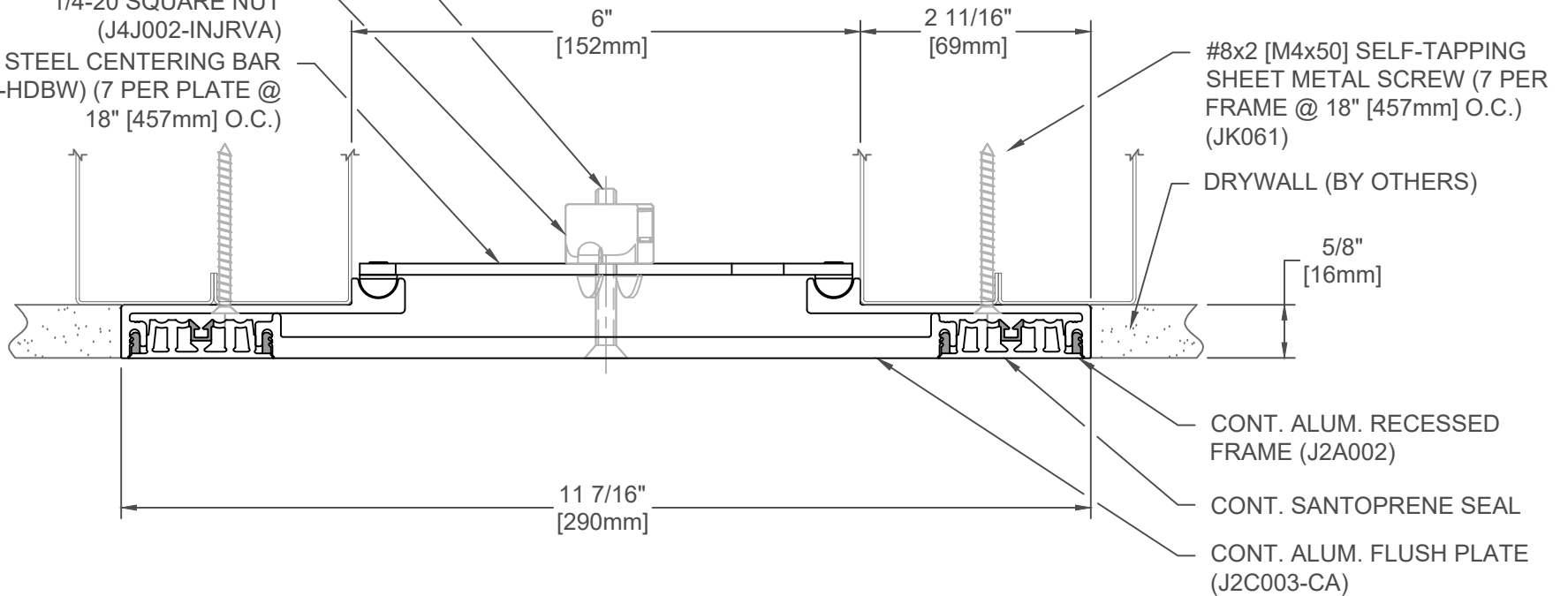


For More Information Visit: Inprocorp.com

1/4-20 X 2" PHILLIPS FLAT HEAD
MACHINE SCREW (7 PER PLATE @
18" [457mm] O.C.) (JK031)

INJECTION MOLDED CLIP WITH
1/4-20 SQUARE NUT
(J4J002-INJRVA)

STEEL CENTERING BAR
(J7J012-HDBW) (7 PER PLATE @
18" [457mm] O.C.)



SPECIFY SEAL COLOR:	
Black (J1D201)	
Beige (J1D202)	
Gray (J1D203)	
Off White (J1D204)	
Bright White (J1D205)	
Greige (J1D206)	

221-A07-150

JOINT WIDTH		MOVEMENT ±			
		HORIZONTAL		VERTICAL	
US	mm	US	mm	US	mm
6"	152	3"	76	1 1/2"	38

FINISH: ALUM. FINISH-CLEAR ANODIZED

PROJECT:

CUSTOMER:

LOCATION:

APPLICATION
RECESSED WALL/WALL CONDITION
W/DUAL SEALS-FLUSH PLATE

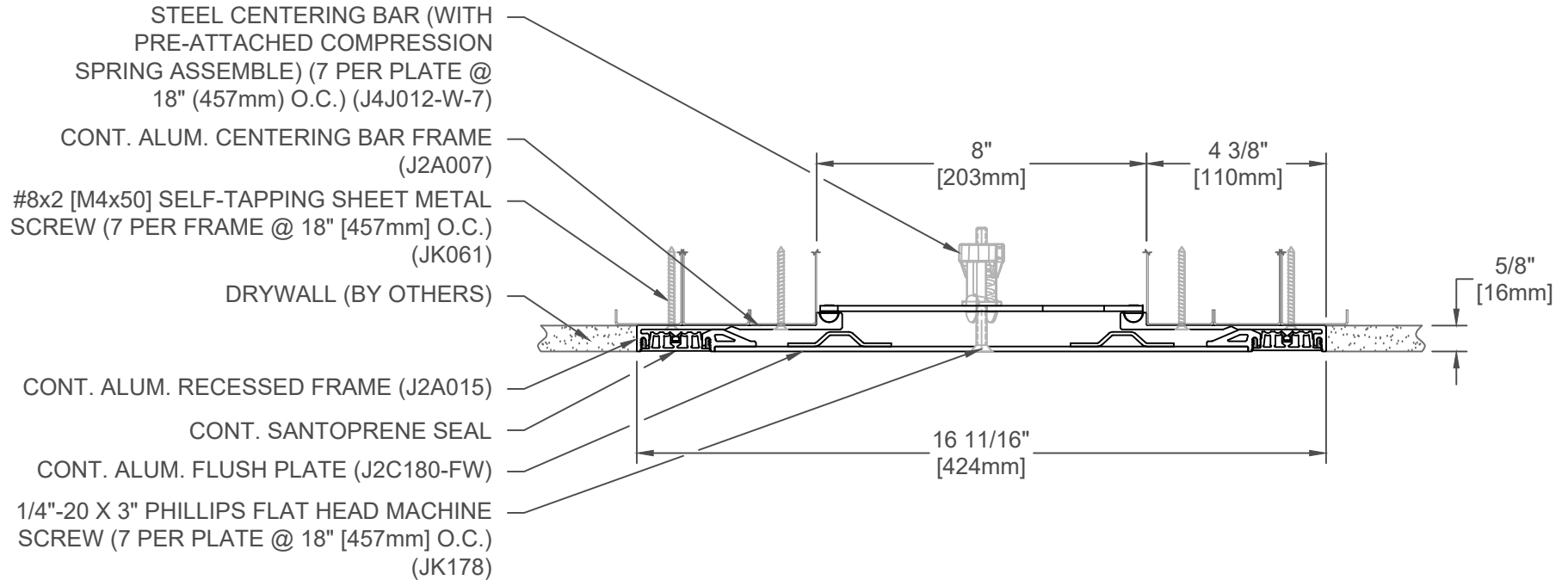
DATE: 03-08-17

SCALE: 1:2

DOC: CADJM.153/R5

inpro.

For More Information Visit: Inprocorp.com



221-A07-200

SPECIFY SEAL COLOR:	
Black (J1D201)	
Beige (J1D202)	
Gray (J1D203)	
Off White (J1D204)	
Bright White (J1D205)	
Greige (J1D206)	

JOINT WIDTH		MOVEMENT ±			
		HORIZONTAL		VERTICAL	
US	mm	US	mm	US	mm
8"	203	4"	102	2"	51

FINISH: ALUM. FINISH-CLEAR ANODIZED

PROJECT:

CUSTOMER:

LOCATION:

APPLICATION
RECESSED WALL/WALL-CEILING/CEILING CONDITION
W/DUAL SEALS-FLUSH PLATE

DATE: 03-08-17

SCALE: 1:4

DOC: CADJM.153/R5

inpro.

For More Information Visit: Inprocorp.com

STEEL CENTERING BAR (WITH PRE-ATTACHED
COMPRESSION SPRING ASSEMBLY) (7 PER
PLATE @ 18" (457mm) O.C.) (J4J018-W-7)

CONT. ALUM. CENTERING BAR FRAME
(J2A007)

#8x2 [M4x50] SELF-TAPPING SHEET
METAL SCREW (7 PER FRAME @
18" [457mm] O.C.) (JK061)

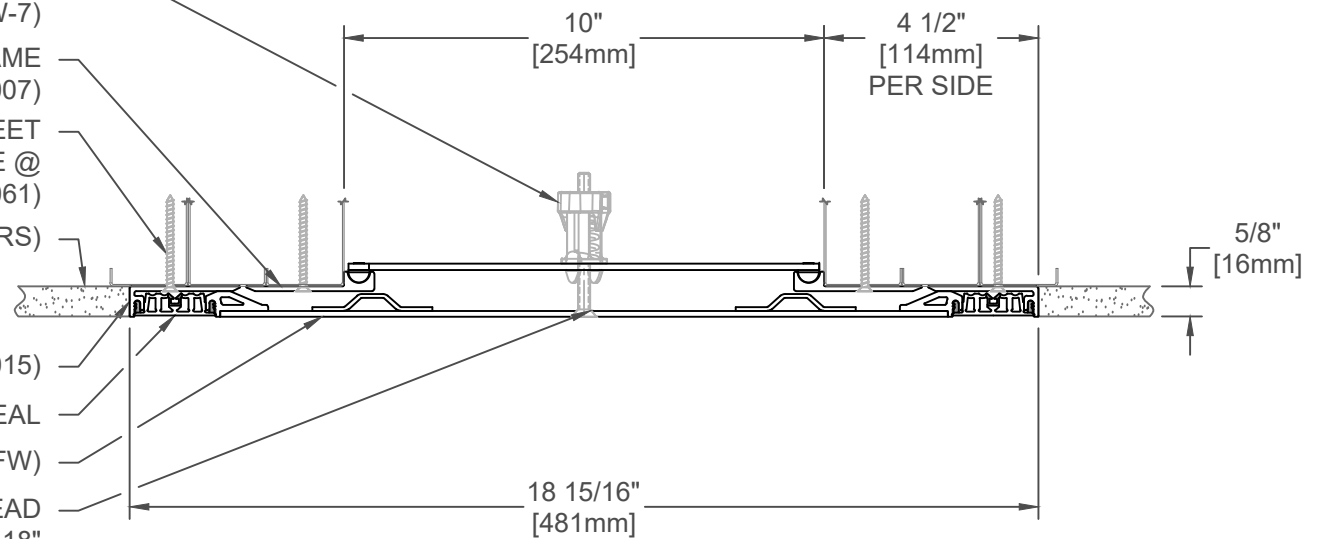
DRYWALL (BY OTHERS)

CONT. ALUM. RECESSED FRAME (J2A015)

CONT. SANTOPRENE SEAL

CONT. ALUM. FLUSH PLATE (J2C181-FW)

1/4"-20 X 3" PHILLIPS FLAT HEAD
MACHINE SCREW (7 PER PLATE @ 18"
[457mm] O.C.) (JK178)



SPECIFY SEAL COLOR:	
Black (J1D201)	
Beige (J1D202)	
Gray (J1D203)	
Off White (J1D204)	
Bright White (J1D205)	
Greige (J1D206)	

221-A07-250

JOINT WIDTH		MOVEMENT ±			
		HORIZONTAL		VERTICAL	
US	mm	US	mm	US	mm
10"	254	5"	127	2 1/2"	64

FINISH: ALUM. FINISH-CLEAR ANODIZED

PROJECT:

CUSTOMER:

LOCATION:

APPLICATION
RECESSED WALL/WALL-CEILING/CEILING CONDITION
W/DUAL SEALS-FLUSH PLATE

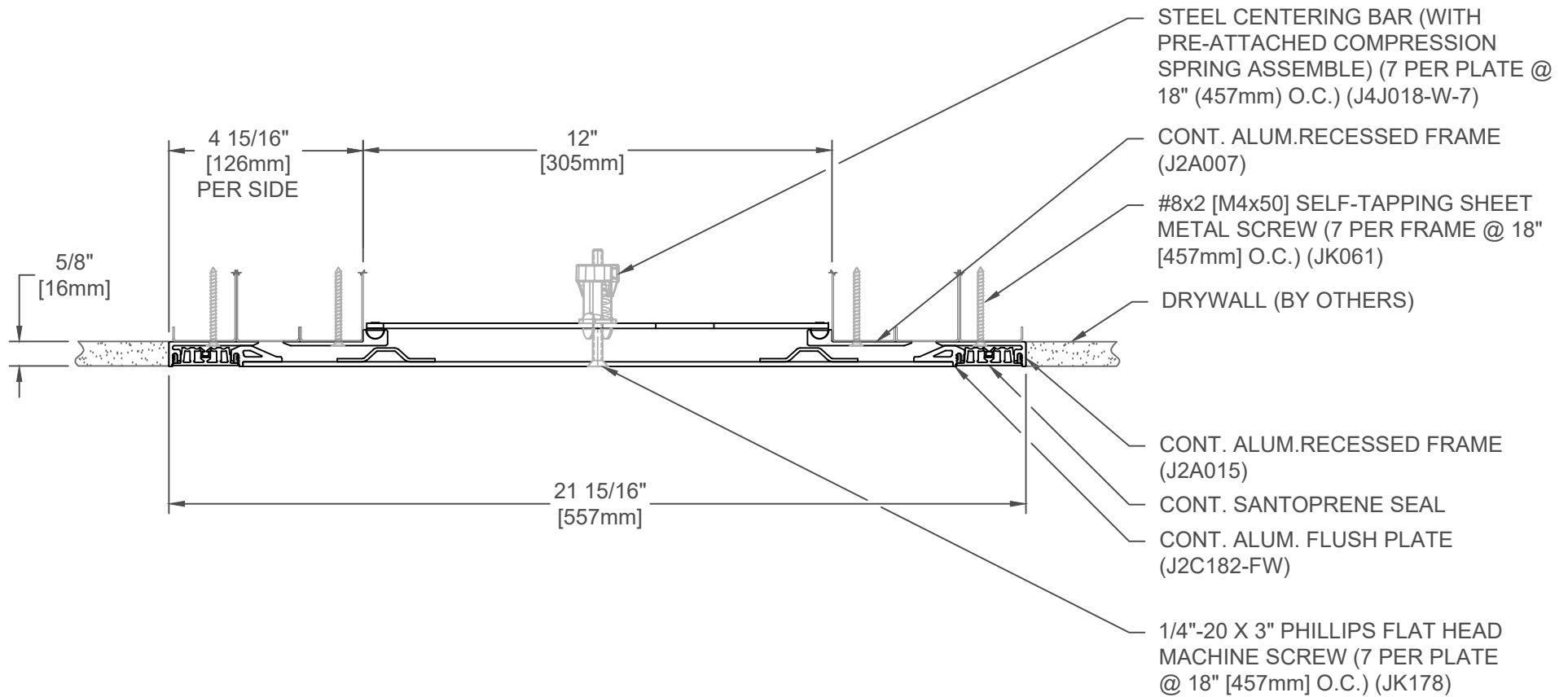
DATE: 03-08-17

SCALE: 1:4

DOC: CADJM.153/R5

inpro.

For More Information Visit: Inprocorp.com



SPECIFY SEAL COLOR:	
Black (J1D201)	
Beige (J1D202)	
Gray (J1D203)	
Off White (J1D204)	
Bright White (J1D205)	
Greige (J1D206)	

221-A07-300

JOINT WIDTH		MOVEMENT ±			
		HORIZONTAL		VERTICAL	
US	mm	US	mm	US	mm
12"	305	6"	152	3"	76

FINISH: ALUM. FINISH-CLEAR ANODIZED

PROJECT:

CUSTOMER:

LOCATION:

APPLICATION
 RECESSED WALL/WALL-CEILING/CEILING CONDITION
 W/DUAL SEALS-FLUSH PLATE

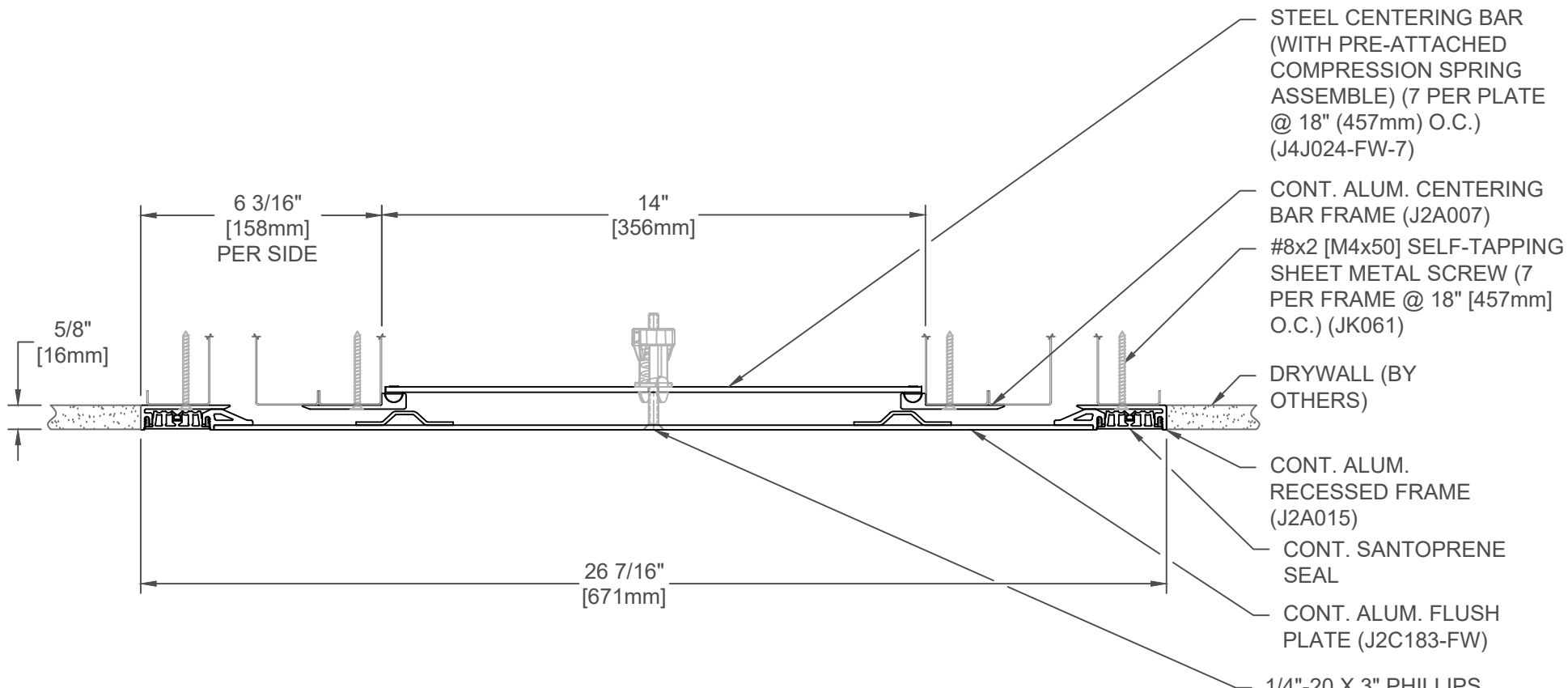
DATE: 03-08-17

SCALE: 1:4

DOC: CADJM.153/R5

inpro.

For More Information Visit: Inprocorp.com



- STEEL CENTERING BAR (WITH PRE-ATTACHED COMPRESSION SPRING ASSEMBLY) (7 PER PLATE @ 18" (457mm) O.C.) (J4J024-FW-7)
- CONT. ALUM. CENTERING BAR FRAME (J2A007)
- #8x2 [M4x50] SELF-TAPPING SHEET METAL SCREW (7 PER FRAME @ 18" [457mm] O.C.) (JK061)
- DRYWALL (BY OTHERS)
- CONT. ALUM. RECESSED FRAME (J2A015)
- CONT. SANTOPRENE SEAL
- CONT. ALUM. FLUSH PLATE (J2C183-FW)
- 1/4"-20 X 3" PHILLIPS FLAT HEAD MACHINE SCREW (7 PER PLATE @ 18" [457mm] O.C.) (JK178)

SPECIFY SEAL COLOR:	
Black (J1D201)	
Beige (J1D202)	
Gray (J1D203)	
Off White (J1D204)	
Bright White (J1D205)	
Greige (J1D206)	

221-A07-350

JOINT WIDTH		MOVEMENT ±			
		HORIZONTAL		VERTICAL	
US	mm	US	mm	US	mm
14"	356	7"	178	7"	178

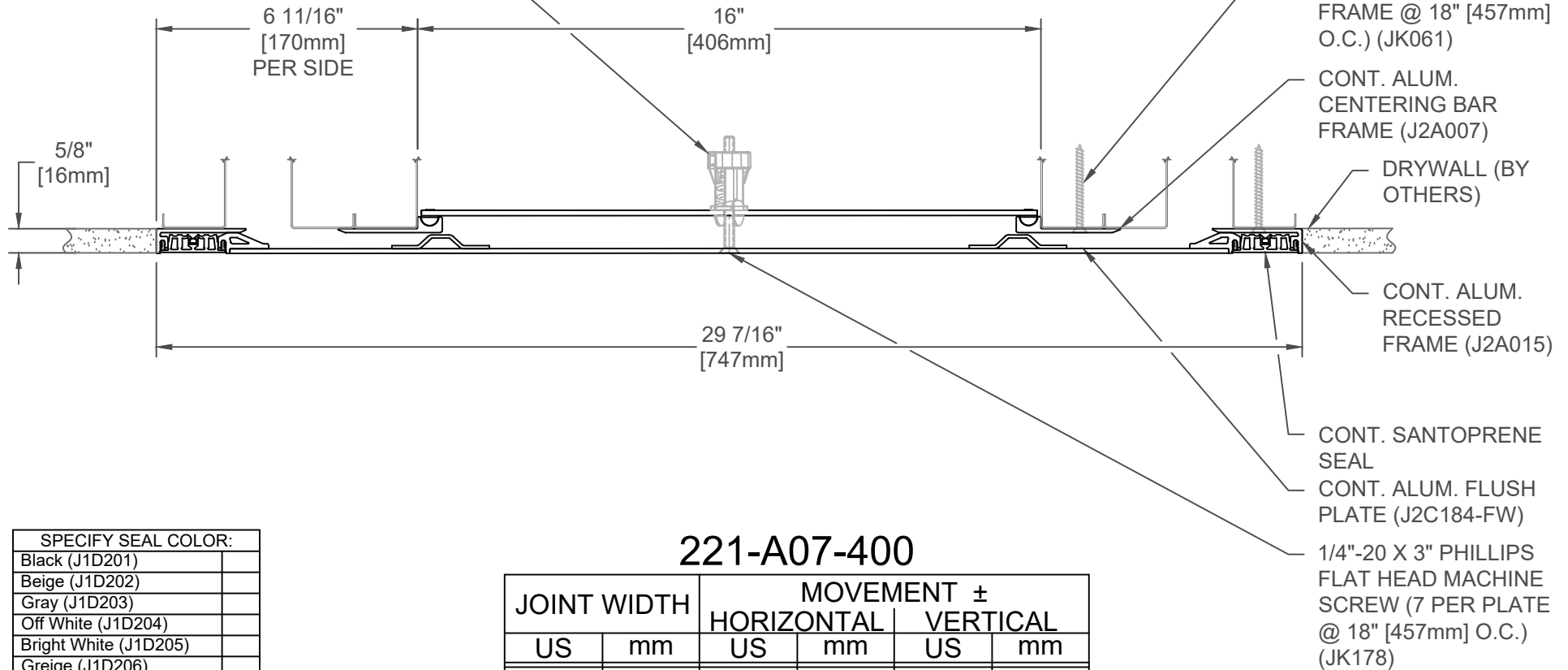
FINISH: ALUM. FINISH-CLEAR ANODIZED
PROJECT:
CUSTOMER:
LOCATION:

APPLICATION
RECESSED WALL/WALL-CEILING/CEILING CONDITION
W/DUAL SEALS-FLUSH PLATE

DATE:	03-08-17
SCALE:	1:4
DOC:	CADJM.153/R5



STEEL CENTERING BAR (WITH PRE-ATTACHED COMPRESSION SPRING ASSEMBLY) (7 PER PLATE @ 18" (457mm) O.C.) (J4J024-FW-7)



#8x2 [M4x50] SELF-TAPPING SHEET METAL SCREW (7 PER FRAME @ 18" [457mm] O.C.) (JK061)

CONT. ALUM. CENTERING BAR FRAME (J2A007)

DRYWALL (BY OTHERS)

CONT. ALUM. RECESSED FRAME (J2A015)

CONT. SANTOPRENE SEAL

CONT. ALUM. FLUSH PLATE (J2C184-FW)

1/4"-20 X 3" PHILLIPS FLAT HEAD MACHINE SCREW (7 PER PLATE @ 18" [457mm] O.C.) (JK178)

221-A07-400

SPECIFY SEAL COLOR:	
Black (J1D201)	
Beige (J1D202)	
Gray (J1D203)	
Off White (J1D204)	
Bright White (J1D205)	
Greige (J1D206)	

JOINT WIDTH		MOVEMENT ±			
		HORIZONTAL		VERTICAL	
US	mm	US	mm	US	mm
16"	406	8"	203	4 1/2"	115

FINISH: ALUM. FINISH-CLEAR ANODIZED

PROJECT:

CUSTOMER:

LOCATION:

APPLICATION
RECESSED WALL/WALL-CEILING/CEILING CONDITION
W/DUAL SEALS-FLUSH PLATE

DATE: 03-08-17

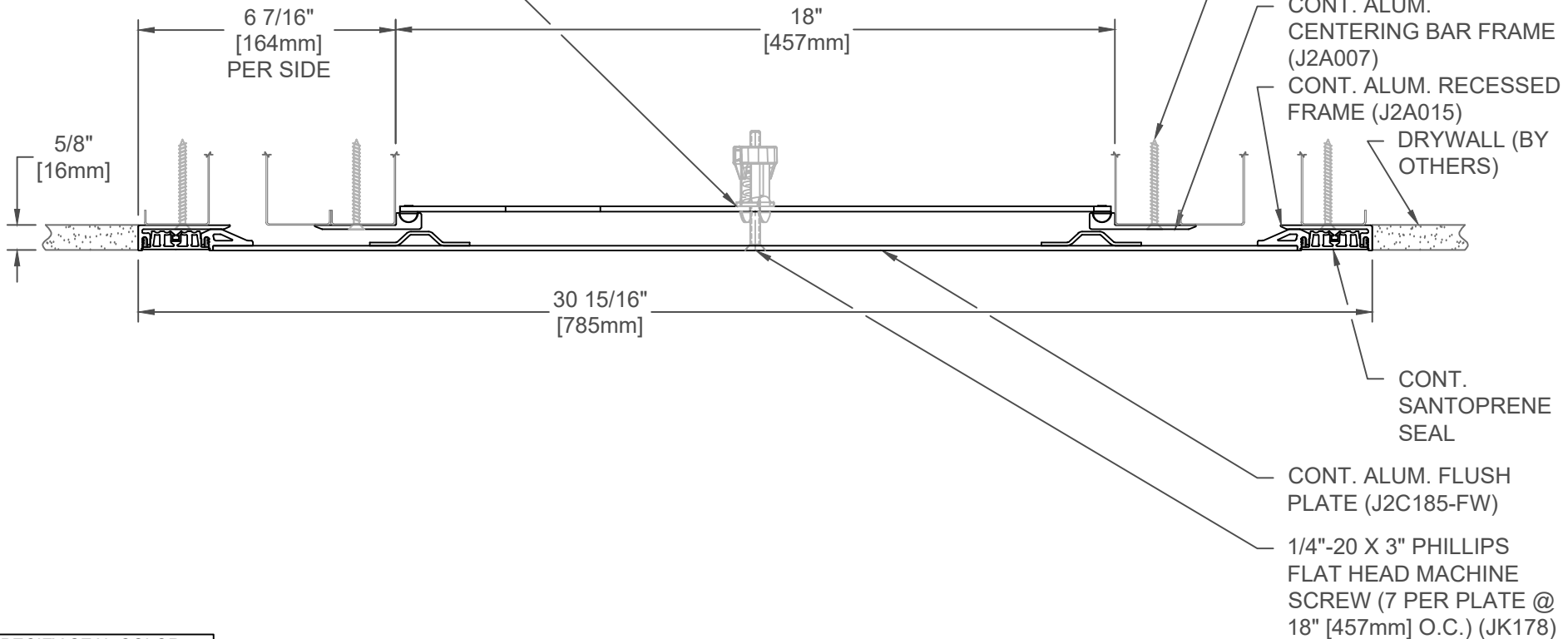
SCALE: 1:4

DOC: CADJM.153/R5

inpro.

For More Information Visit: Inprocorp.com

STEEL CENTERING BAR (WITH PRE-ATTACHED COMPRESSION SPRING ASSEMBLY) (7 PER PLATE @ 18" (457mm) O.C.) (J4J030-FW-7)



#8x2 [M4x50] SELF-TAPPING SHEET METAL SCREW (7 PER FRAME @ 18" [457mm] O.C.) (JK061)

CONT. ALUM. CENTERING BAR FRAME (J2A007)

CONT. ALUM. RECESSED FRAME (J2A015)

DRYWALL (BY OTHERS)

CONT. SANTOPRENE SEAL

CONT. ALUM. FLUSH PLATE (J2C185-FW)

1/4"-20 X 3" PHILLIPS FLAT HEAD MACHINE SCREW (7 PER PLATE @ 18" [457mm] O.C.) (JK178)

221-A07-450

SPECIFY SEAL COLOR:	
Black (J1D201)	
Beige (J1D202)	
Gray (J1D203)	
Off White (J1D204)	
Bright White (J1D205)	
Greige (J1D206)	

JOINT WIDTH		MOVEMENT ±			
		HORIZONTAL		VERTICAL	
US	mm	US	mm	US	mm
18"	457	9"	229	4 1/2"	115

FINISH: ALUM. FINISH-CLEAR ANODIZED

PROJECT:

CUSTOMER:

LOCATION:

APPLICATION
RECESSED WALL/WALL-CEILING/CEILING CONDITION
W/DUAL SEALS-FLUSH PLATE

DATE: 03-08-17

SCALE: 1:4

DOC: CADJM.153/R5

inpro.

For More Information Visit: Inprocorp.com