

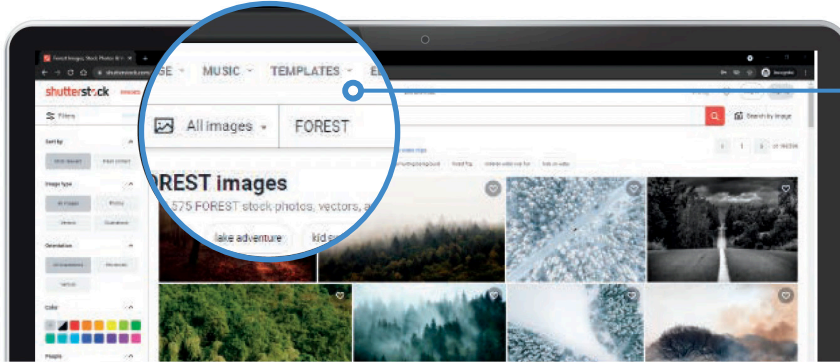
# shutterstock™ Image Selection Guide

## 1 Click The Link: [www.shutterstock.com](http://www.shutterstock.com)

If you don't already have one, we recommend that you set up a free Shutterstock account. When you set up an account, you will then have the ability to save images to a collection, and then share that collection with others. See more about this in STEP 4.

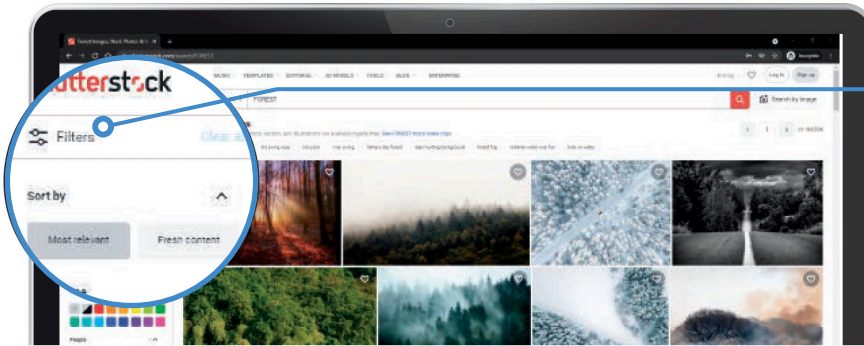
## 2 Search For Content & Filter Your Results

The standard min. of 20MB is for 5 standard panels (240") or less. Any array of panels more than that, needs to be at least 24MB or larger.



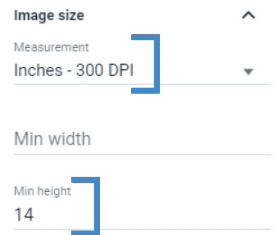
Search for everything from objects to concepts.

## 3 Filter The Search Results To Find The Largest Sized Images



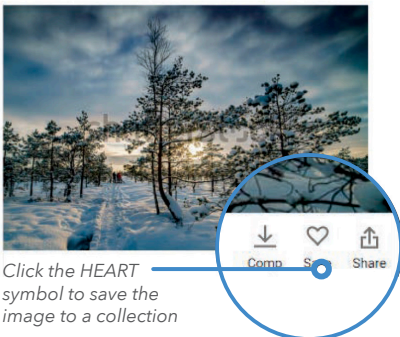
Open the FILTERS menu along the left side of the web page.

Scroll down until you see the IMAGE SIZE heading. Update to match the values shown below and press enter.



## 4 Save Your Images To A Collection

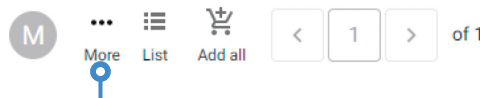
Saving your images to a collection allows you to easily reference back to them and share them with others for review.



Click the HEART symbol to save the image to a collection

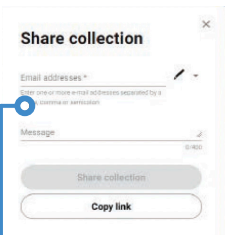
## 5 Share Your Collection

Along the top right of the web page, click the HEART symbol to open your collections and then select the collection you would like to share.



Click MORE and select SHARE

Enter the recipient's email address and enter a message (if desired) then click SHARE COLLECTION and you're all set!



Architectural Products **inpro.**

[inpro.com](http://inpro.com) | 800.222.5556